



Heol Graigwen, offers over £210,000

- Well Presented
- Open Plan Lounge/Diner
- Nearby Schools
- Great Transport Links
- Local Amenities
- EPC Rating: C



 3  1  1



About the property

This beautifully presented three-bedroom semi-detached property offers spacious and versatile accommodation, ideal for families, first-time buyers, or those looking to upsize.

Upon entering, you are welcomed by a bright and inviting entrance hallway that sets the tone for the rest of the home. The hallway provides access to the principal ground floor rooms and offers useful space for coats and footwear. To the front of the property, the generous lounge/diner creates a wonderful open-plan living and entertaining area. Filled with natural light from large windows, this room comfortably accommodates both relaxation and dining zones, making it perfect for everyday living as well as hosting family and friends.

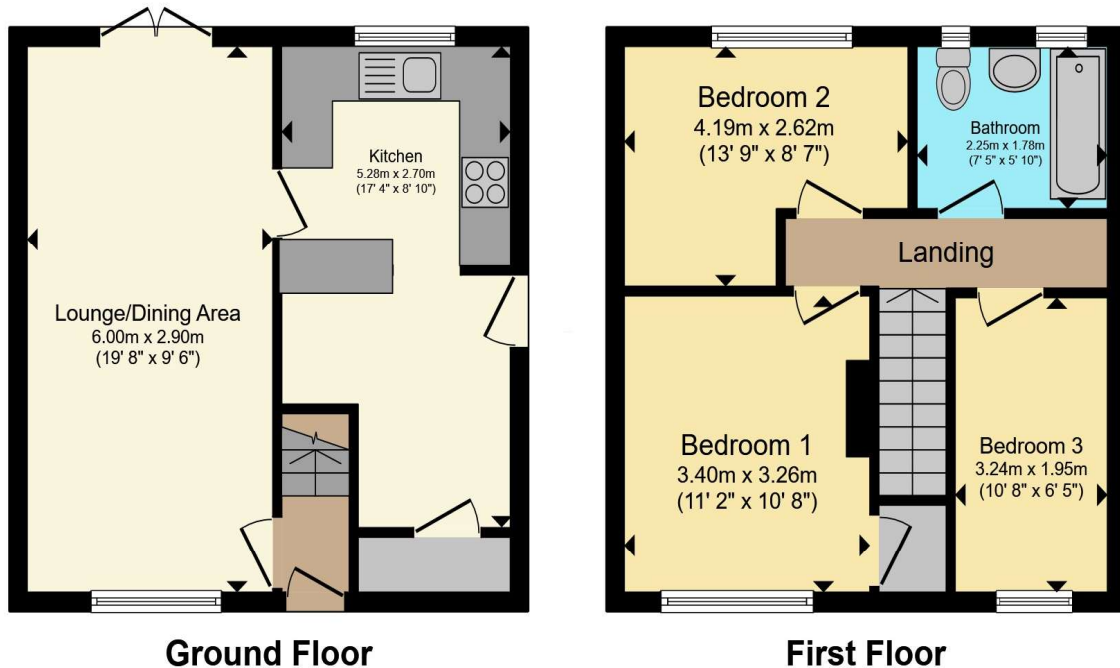
The kitchen is thoughtfully arranged with ample worktop and storage space, providing a practical and functional environment for cooking. There is plenty of room for appliances, with views over the rear garden adding to its appeal.

Upstairs, the property boasts three well-proportioned bedrooms. The main bedroom offers excellent space for wardrobes and additional furnishings, while the remaining two bedrooms are ideal for children, guests, or a home office. The family bathroom is fitted with a modern suite, serving all bedrooms conveniently.

Externally, the rear garden provides a private outdoor retreat, ideal for relaxing, gardening, or entertaining during warmer months.



Floorplan



Total floor area 68.4 m² (736 sq.ft.) approx

This floor plan is for illustrative purposes only. It is not drawn to scale. Any measurements, floor areas (including any total floor area), openings and orientation are approximate. No details are guaranteed, they cannot be relied upon for any purpose and they do not form part of any agreement. No liability is taken for any error, omission or misstatement. A party must rely upon its own inspection(s). Powered by www.propertybox.io



Important Information

Note while we endeavour to make our sales details accurate and reliable, if there is any point which is of particular interest to you, please contact the office and we will be pleased to confirm the position for you. We have not personally tested any apparatus, equipment, fixtures, fittings or services and cannot verify they are in working order or fit for their purposes. Nothing in these particulars is intended to indicate that carpets or curtains, furnishings or fittings, electrical goods (whether wired or not). Gas fires or light fittings or any other fixtures not expressly included form part of the property offered for sale. This computer generated Floorplan, if applicable, is intended as a general guide to the layout and design of the property. It is not to scale and should not be relied upon for dimensions. Tenure: We cannot confirm the tenure of the property as we have not had access to the legal documents. The buyer is advised to obtain verification from their solicitor or surveyor.

Peter Alan Limited is registered in England and Wales under company number 2073153, Registered Office is Cumbria House, 16-20 Hockliffe Street, Leighton Buzzard, Bedfordshire, LU7 1GN. VAT Registration Number is 500 2481 05. For activities relating to regulated mortgages and non-investment insurance contracts, Peter Alan Limited is an appointed representative of Connells Limited which is authorised and regulated by the Financial Conduct Authority. Connells Limited's Financial Services Register number is 302221. Most buy-to-let

