



## Hawthorn Park, £290,000

- Four Bedroom Semi-Detached House
- Double Storey Extension
- Immaculate Throughout
- Private Rear Garden
- Driveway Parking
- Great Location
- EPC Rating: D



 4  2  1



## About the property

Situated within a quiet and desirable cul-de-sac in the popular village of Brynna, this beautifully presented and extended four-bedroom semi-detached property offers spacious and modern living throughout, making it an ideal family home.

The accommodation boasts a double storey extension with a generous ground floor layout, thoughtfully designed and finished to a high standard with contemporary décor that flows seamlessly throughout. The property features four well-proportioned bedrooms, providing ample space for growing families or those in need of flexible living arrangements.

Externally, the home continues to impress with a private rear garden—perfect for outdoor entertaining, relaxation, or family activities—while the driveway to the front offers convenient off-road parking for multiple vehicles.

This stunning home is ideally positioned within easy reach of local amenities, schools, and transport links, combining peaceful surroundings with everyday convenience.

Early viewing is highly recommended to fully appreciate both the size and quality of this exceptional property.

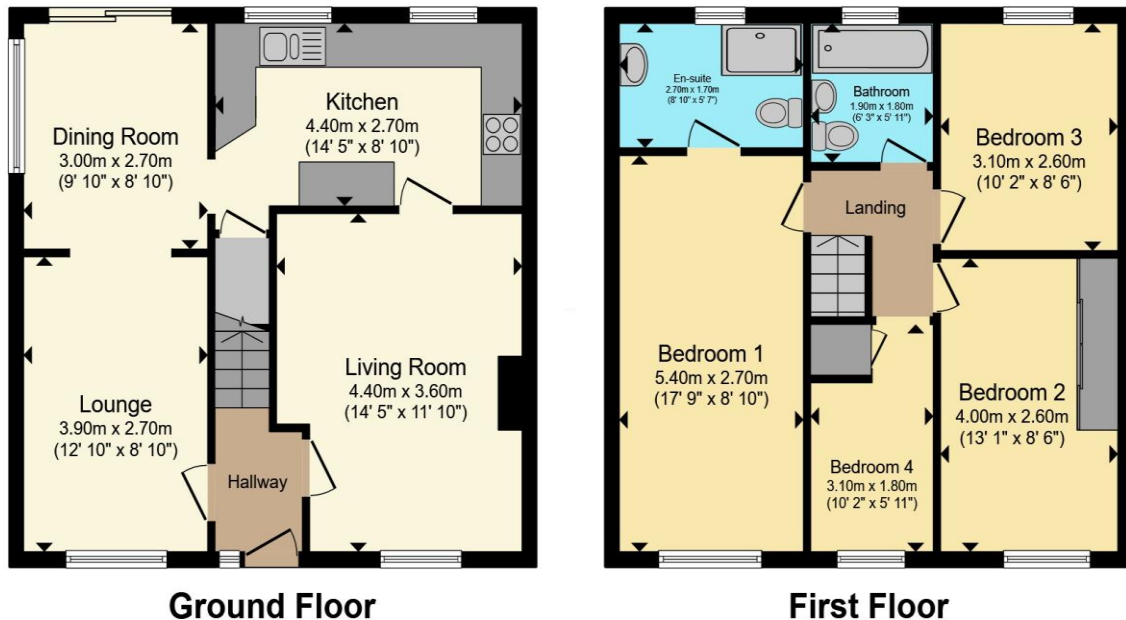


Accommodation

01443 222851

talbotgreen@peteralan.co.uk

## Floorplan



Total floor area 105.1 m<sup>2</sup> (1,131 sq.ft.) approx

This floor plan is for illustrative purposes only. It is not drawn to scale. Any measurements, floor areas (including any total floor area), openings and orientation are approximate. No details are guaranteed, they cannot be relied upon for any purpose and they do not form part of any agreement. No liability is taken for any error, omission or misstatement. A party must rely upon its own inspection(s). Powered by [www.propertybox.io](http://www.propertybox.io)



## Important Information

Note while we endeavour to make our sales details accurate and reliable, if there is any point which is of particular interest to you, please contact the office and we will be pleased to confirm the position for you. We have not personally tested any apparatus, equipment, fixtures, fittings or services and cannot verify they are in working order or fit for their purposes. Nothing in these particulars is intended to indicate that carpets or curtains, furnishings or fittings, electrical goods (whether wired or not). Gas fires or light fittings or any other fixtures not expressly included form part of the property offered for sale. This computer generated Floorplan, if applicable, is intended as a general guide to the layout and design of the property. It is not to scale and should not be relied upon for dimensions. Tenure: We cannot confirm the tenure of the property as we have not had access to the legal documents. The buyer is advised to obtain verification from their solicitor or surveyor.

Peter Alan Limited is registered in England and Wales under company number 2073153. Registered Office is Cumbria House, 16-20 Hockliffe Street, Leighton Buzzard, Bedfordshire, LU7 1GN. VAT Registration Number is 500 2481 05. For activities relating to regulated mortgages and non-investment insurance contracts, Peter Alan Limited is an appointed representative of Connells Limited which is authorised and regulated by the Financial Conduct Authority. Connells Limited's Financial Services Register number is 302221. Most buy-to-let

