



Pound Close, Lyneham CHIPPENHAM SN15 4QY

welcome to

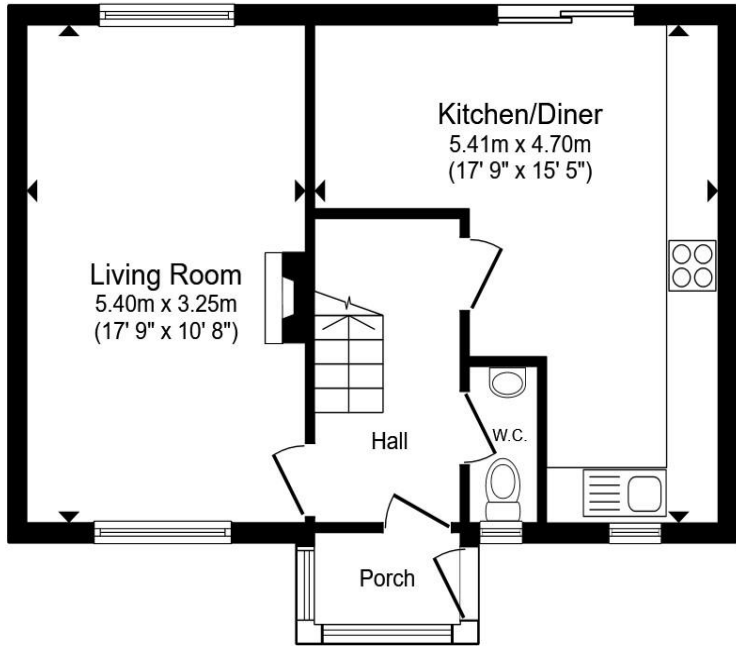
Pound Close, Lyneham CHIPPENHAM

A well-presented three-bedroom semi-detached home set within a highly sought-after cul-de-sac location.

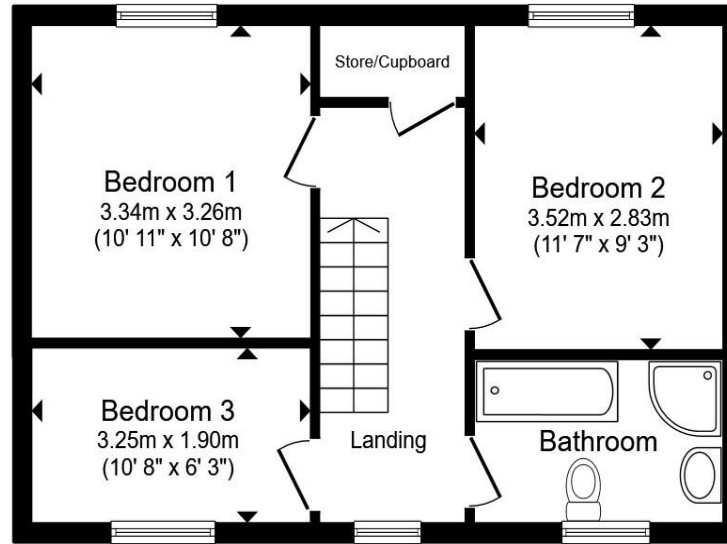
The property offers a large lounge, modern kitchen/diner, with the added convenience of a downstairs cloakroom, and a family bathroom.

Outside, there is a generous rear garden. Viewing advised!





Ground Floor



First Floor

Entrance Porch

Entrance Hall

Cloakroom

Lounge

Kitchen/Diner

Landing

Bedroom One

Bedroom Two

Bedroom Three

Bathroom

Rear Garden

Total floor area 86.9 m² (935 sq.ft.) approx

This floor plan is for illustrative purposes only. It is not drawn to scale. Any measurements, floor areas (including any total floor area), openings and orientation are approximate. No details are guaranteed, they cannot be relied upon for any purpose and they do not form part of any agreement. No liability is taken for any error, omission or misstatement. A party must rely upon its own inspection(s). Powered by www.propertybox.io



welcome to

Pound Close, Lyneham CHIPPENHAM

- Sought after cul de sac location
- Spacious lounge & Kitchen / Diner
- Three bedrooms & Bathroom
- Generous size rear garden
- Downstairs cloakroom

Tenure: Freehold EPC Rating: C
Council Tax Band: C

guide price

£270,000



Please note the marker reflects the
postcode not the actual property

view this property online allenandharris.co.uk/Property/CLN109717



Property Ref:
CLN109717 - 0005

1. MONEY LAUNDERING REGULATIONS Intending purchasers will be asked to produce identification documentation at a later stage and we would ask for your co-operation in order that there is no delay in agreeing the sale. 2. These particulars do not constitute part or all of an offer or contract. 3. The measurements indicated are supplied for guidance only and as such must be considered incorrect. Potential buyers are advised to recheck measurements before committing to any expense. 4. We have not tested any apparatus, equipment, fixtures or services and it is in the buyers interest to check the working condition of any appliances. 5. Where an EPC, or a Home Report (Scotland only) is held for this property, it is available for inspection at the branch by appointment. If you require a printed version of a Home Report, you will need to pay a reasonable production charge reflecting printing and other costs. 6. We are not able to offer an opinion either written or verbal on the content of these reports and this must be obtained from your legal representative. 7. Whilst we take care in preparing these reports, a buyer should ensure that his/her legal representative confirms as soon as possible all matters relating to title including the extent and boundaries of the property and other important matters before exchange of contracts.


allen & harris



01249 814681



calne@allenandharris.co.uk



17 High Street, CALNE, Wiltshire, SN11 0BS



allenandharris.co.uk