



AVON PLACE SALISBURY SP1
£1,550 PER MONTH AVAILABLE 14/08/2026




Hamptons

THE HOME EXPERTS

{ THE PARTICULARS

Avon Place Salisbury SP1

£1,550 Per Month
Unfurnished

 3 Bedrooms
 2 Bathrooms
 1 Reception

Features

- Three Bedrooms, - Garden, - Two
Allocated Parking Spaces, - En-Suite

Council Tax

Council Tax Band D

Hamptons
54 Castle Street
Salisbury, SP1 3TS
01722 480115
salisburylettings@hamptons.co.uk
www.hamptons.co.uk

{ A BEAUTIFULLY PRESENTED THREE-BEDROOM HOME

The Property

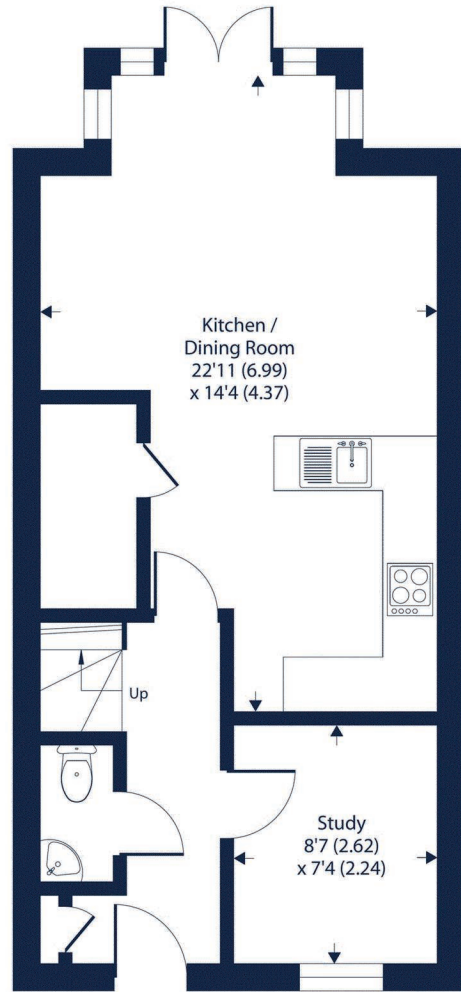
This beautifully presented three-bedroom home is finished to a high standard throughout and benefits from two allocated parking spaces. The ground floor features a spacious kitchen/dining room fitted with a range of wall and base units, along with appliances including a fridge/freezer, dishwasher, washing machine, oven, and gas hob. There is ample space for a dining table and seating area, while patio doors open onto the garden. A useful storage cupboard, separate study, and downstairs cloakroom complete the ground floor accommodation. On the first floor, you will find a bright and comfortable sitting room, together with the principal bedroom, which benefits from built-in storage and an en-suite shower room. The top floor offers two further bedrooms, one of which includes built-in wardrobes, as well as a modern family bathroom. Outside, the rear garden is arranged over two levels and features a generous patio area, ideal for outdoor dining and entertaining. A rear gate provides convenient access to the two allocated parking spaces. The property is ideally situated within a good distance of Salisbury city centre (approximately 0.7 miles walking) and is available to let either furnished or unfurnished.



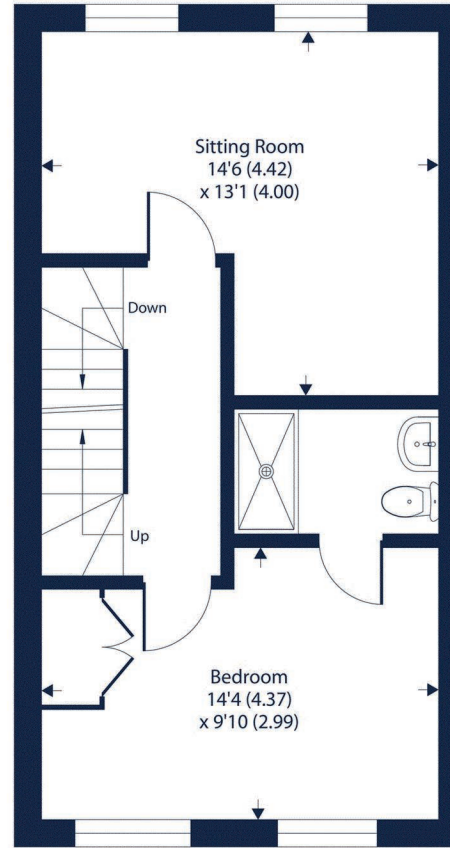
Avon Place, Salisbury, SP1

Approximate Area = 1251 sq ft / 116.2 sq m

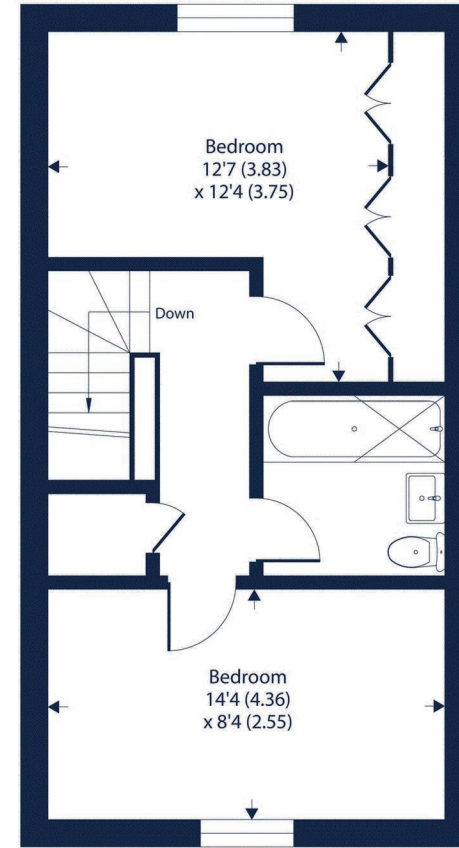
For identification only - Not to scale



GROUND FLOOR



FIRST FLOOR



SECOND FLOOR



Floor plan produced in accordance with RICS Property Measurement 2nd Edition, Incorporating International Property Measurement Standards (IPMS2 Residential). © nichecom 2026. Produced for Hamptons. REF: 1464486

For Clarification

We wish to inform prospective tenants that we have prepared these particulars as a general guide and they have been confirmed as accurate by the landlord. We have not verified permissions, nor carried out a survey, tested the services, appliances and specific fittings. Room sizes are approximate and measurement figures rounded: they are taken between internal wall surfaces and therefore include cupboards/shelves, etc. Accordingly, they should not be relied upon for

carpets and furnishings. It should also be noted that all fixtures and fittings, carpeted, curtains/blinds, kitchen equipment and garden statuary, whether fitted or not, are deemed removable by the landlord unless specifically itemised with these particulars. Please enquire in office or on our website for details on holding deposit and tenancy deposit figures.

Energy Efficiency Rating		Current	Potential
Very Energy Efficient (less than 10kWh/m ² per year)	A		
Energy Efficient (10-15kWh/m ² per year)	B		
Decent (15-20kWh/m ² per year)	C		
Below Average (20-25kWh/m ² per year)	D		
Average (25-30kWh/m ² per year)	E		
Below Average (30-35kWh/m ² per year)	F		
Poor (35-45kWh/m ² per year)	G		
Very Poor (45-55kWh/m ² per year)		77	87

England & Wales EU Directive 2002/91/EC

