



Cobblestone Square, E1W

£435,000

 1  1  1  C

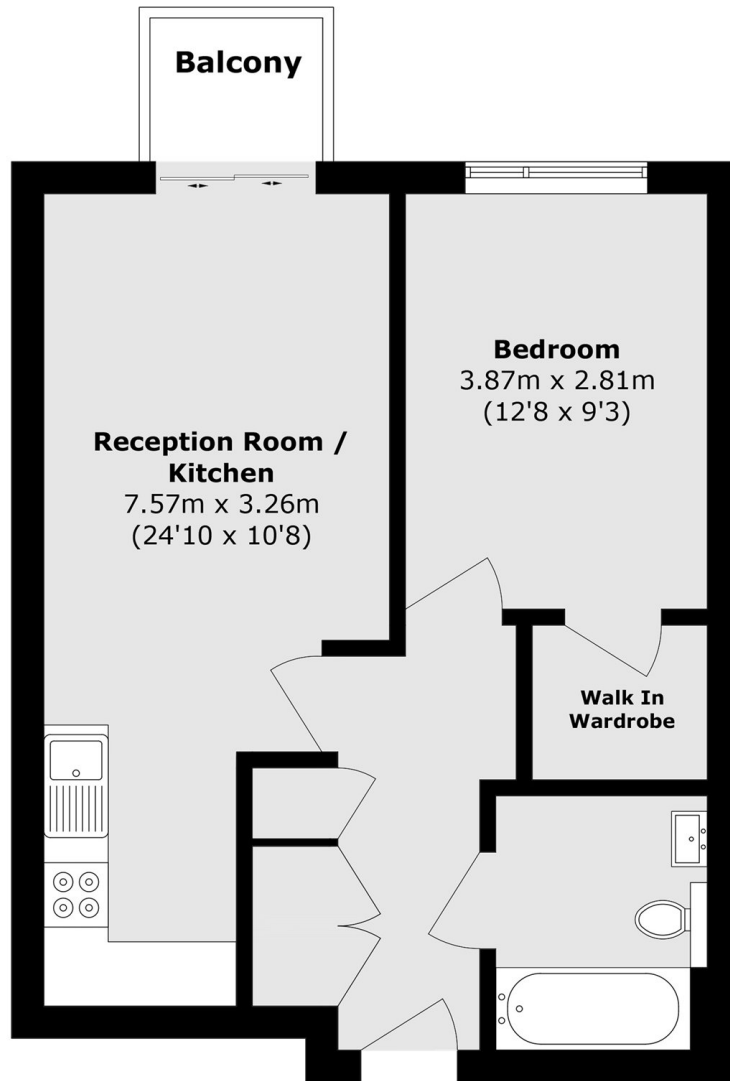
- Park Vista Tower
- 24 Hour Concierge
- Allocated Parking Space
- Private Balcony
- Resident Facilities
- Chain Free



Welcome to this modern ninth floor one bedroom property in the sought after development, Park Vista Tower. Features to include an allocated parking space, private balcony, resident facilities, 24 hour concierge, and offered on a chain free basis.

Park Vista Tower is situated in the heart of Wapping. Just 0.4 miles away is Wapping Overground Station which offers excellent links around the City. St Katherine's Docks is just a short walk away from the development.





Total area (approx.): 48.1 sq. m (685.6 sq. ft)

Balcony area (approx.): 2.1 sq. m (22.6 sq. ft)

35A Wapping High Street,
London, E1W 1NR
020 7665 5589
ea2group.com