

Mike
Dobson



9 Newfield Chase
Garforth, Leeds, LS25 2PD

£130,000

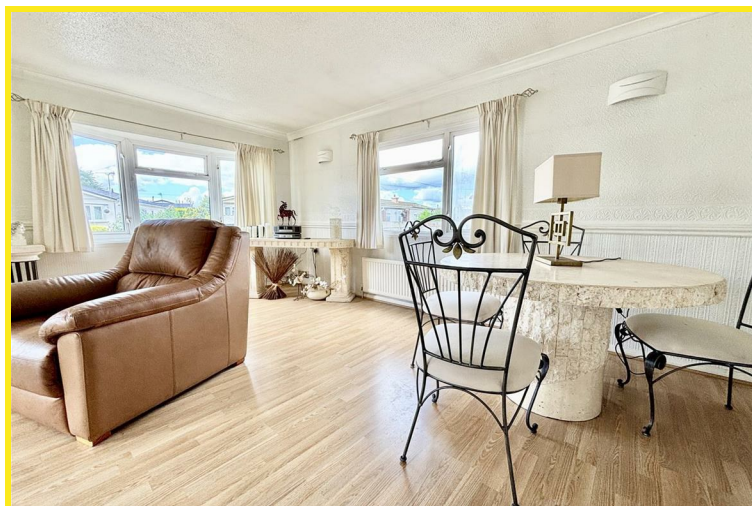
9 Newfield Chase

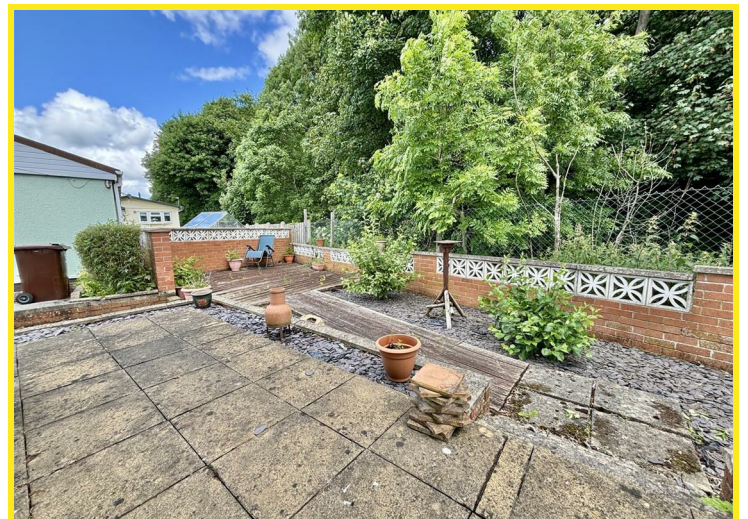
Nestled within the tranquil Cliffe Top residential park in Garforth, Leeds, this charming double fronted two-bedroom park home presents a wonderful opportunity for those aged over 50 seeking a peaceful retreat. Set on a larger than average plot, the property boasts delightful views of the surrounding woods, creating a serene atmosphere.

Upon entering, you will find a well-designed layout that includes a welcoming kitchen, a spacious lounge/diner featuring elegant PVCu bow windows, and an inner hallway leading to the two comfortable bedrooms. The master bedroom is complemented by fitted wardrobes, while the second bedroom offers a convenient pull-out bed, making it ideal for guests or family visits. The property also includes a shower room and a separate w.c., ensuring practicality and comfort.

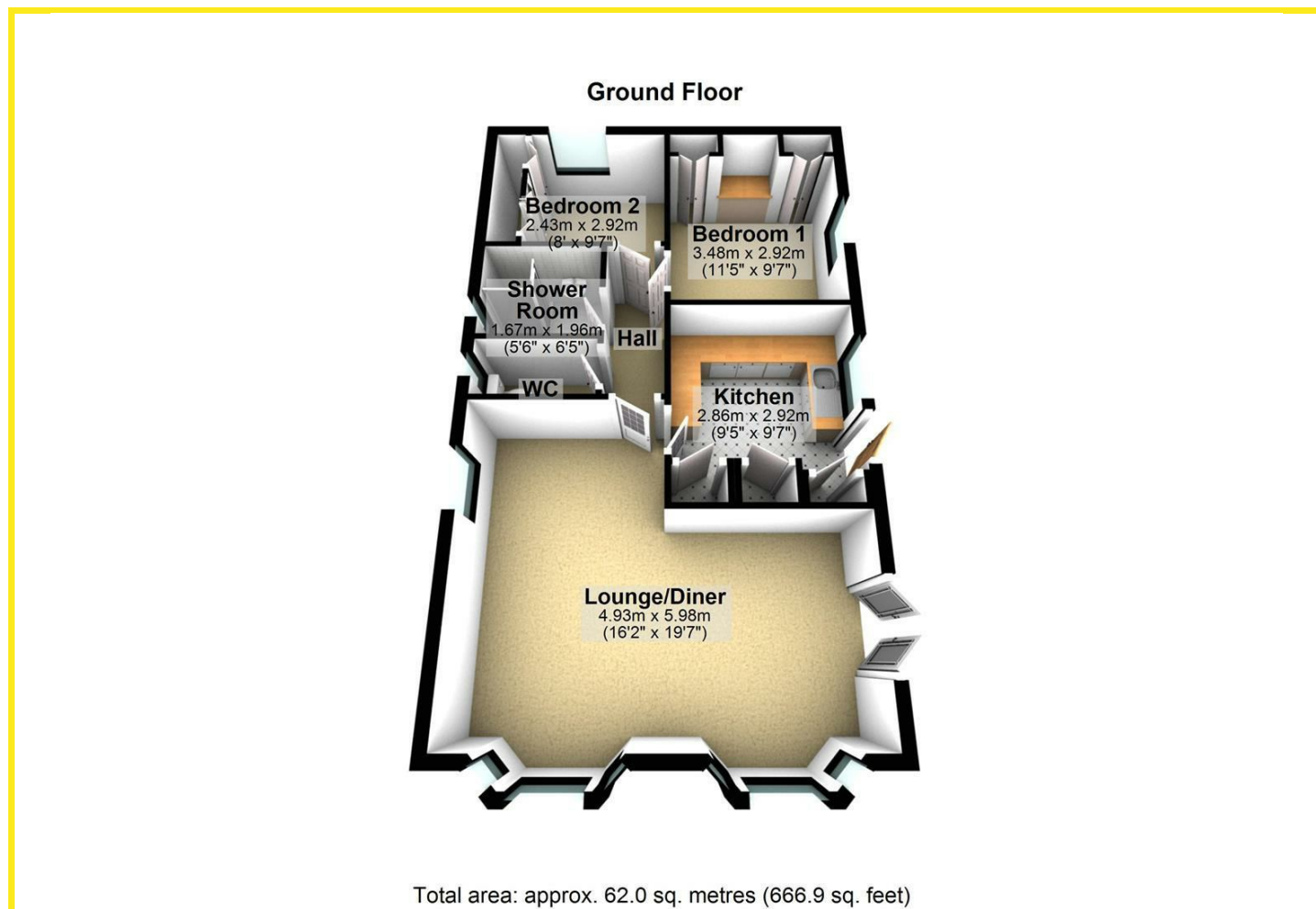
The exterior of the home is equally appealing, with a driveway providing off-road parking for your convenience. The front garden features a shaped lawn adorned with various plants and shrubs, enhancing the property's curb appeal. At the rear, a low maintenance area with plum slate and paving offers a perfect spot to relax and enjoy the natural surroundings, all while overlooking the woods.

With PVCu double glazed windows and gas fired central heating, this park home combines comfort with energy efficiency. We highly recommend scheduling a viewing to fully appreciate the charm and potential of this delightful property.

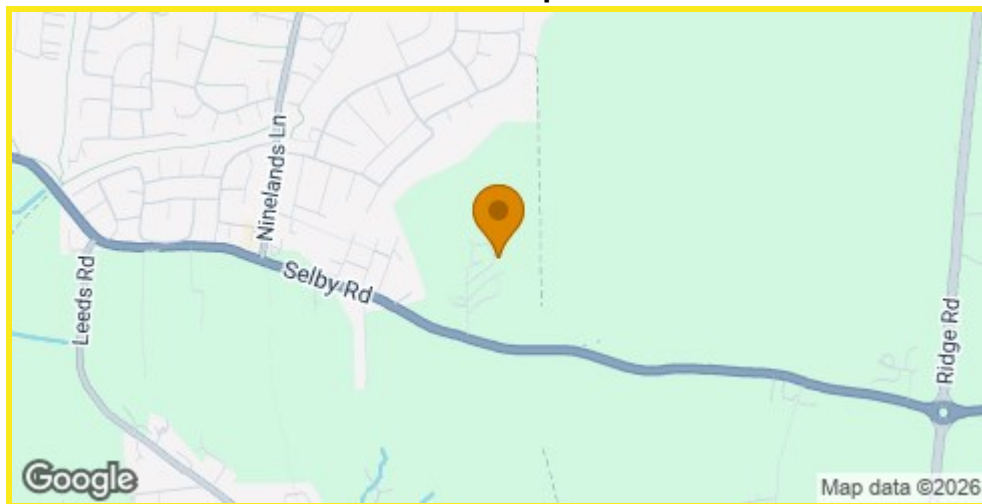




Floor Plan



Area Map



Energy Efficiency Graph

Directions

Along the A63 Leeds/Selby Road proceed up to Garforth Cliff and the site is located on the left hand side (just before the Garden Centre)

These particulars, whilst believed to be accurate are set out as a general outline only for guidance and do not constitute any part of an offer or contract. Intending purchasers should not rely on them as statements of representation of fact, but must satisfy themselves by inspection or otherwise as to their accuracy. No person in this firm's employment has the authority to make or give any representation or warranty in respect of the property.

4 Main Street, Garforth, LS25 1EZ

Tel: 0113 2864276 Email: headoffice@mDOBSON.CO.UK <https://www.mDOBSON.CO.UK>