



Constance Street,Saltaire Shipley BD18 4LX

welcome to

Constance Street, Saltaire Shipley

Charming stone-built terrace in the heart of Saltaire, offering a bright living room, fitted kitchen and three bedrooms. Ideally located close to local amenities, parks and the railway station.

Living Room

A bright and comfortable reception room featuring a window to the front elevation, fitted carpet, electric fire, and central heating radiator.

Kitchen

A practical kitchen space featuring a rear-facing window, tiled flooring, and a range of fitted wall and base units incorporating a gas hob with electric oven and stainless steel sink. The boiler is also housed here, with convenient access to the cellar and a door leading out to the rear yard.

Bedroom One

A well-proportioned double bedroom enjoying a front-facing window providing natural light, finished with fitted carpet and a central heating radiator.

Bedroom Two

A comfortable bedroom enjoying a front-facing window providing natural light, complete with fitted carpet and a central heating radiator.

Bedroom Three

A well-proportioned bedroom with a rear-facing window allowing for natural light, finished with fitted carpet and a central heating radiator.

Bathroom

Fitted with a rear-facing window, this bathroom includes a low level WC, wash hand basin, and a panelled bath with shower over, offering a practical and functional space.

Cellar

A useful cellar area offering additional storage space, with electrics located within the cellar.





view this property online holroydsestateagents.co.uk/Property/BAI101637



welcome to

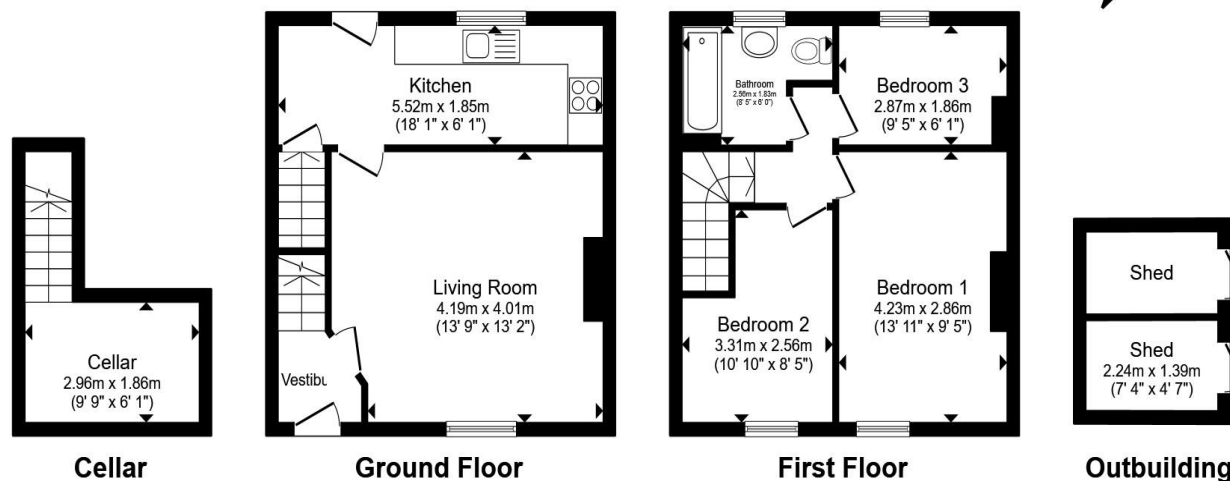
Constance Street, Saltaire Shipley

- Period stone-built terrace
- Three bedrooms
- Spacious living room
- Fitted kitchen with rear access
- Useful cellar storage

Tenure: Freehold EPC Rating: D

Council Tax Band: B

£250,000



Total floor area 81.3 m² (876 sq.ft.) approx

This floor plan is for illustrative purposes only. It is not drawn to scale. Any measurements, floor areas (including any total floor area), openings and orientation are approximate. No details are guaranteed, they cannot be relied upon for any purpose and they do not form part of any agreement. No liability is taken for any error, omission or misstatement. A party must rely upon its own inspection(s). Powered by www.propertybox.io

holroyds

view this property online holroydsestateagents.co.uk/Property/BAI101637



Property Ref:
BAI101637 - 0004

1. MONEY LAUNDERING REGULATIONS Intending purchasers will be asked to produce identification documentation at a later stage and we would ask for your co-operation in order that there is no delay in agreeing the sale. 2. These particulars do not constitute part or all of an offer or contract. 3. The measurements indicated are supplied for guidance only and as such must be considered incorrect. Potential buyers are advised to recheck measurements before committing to any expense. 4. We have not tested any apparatus, equipment, fixtures or services and it is in the buyers interest to check the working condition of any appliances. 5. Where an EPC, or a Home Report (Scotland only) is held for this property, it is available for inspection at the branch by appointment. If you require a printed version of a Home Report, you will need to pay a reasonable production charge reflecting printing and other costs. 6. We are not able to offer an opinion either written or verbal on the content of these reports and this must be obtained from your legal representative. 7. Whilst we take care in preparing these reports, a buyer should ensure that his/her legal representative confirms as soon as possible all matters relating to title including the extent and boundaries of the property and other important matters before exchange of contracts.

holroyds



01274 809254



baildon@holroydsestateagents.co.uk



21-23 Westgate, Baildon, SHIPLEY, West Yorkshire, BD17 5EH



holroydsestateagents.co.uk