

# SNELLERS

ESTATE AGENTS



## Whitton Road, TW1

£315,000

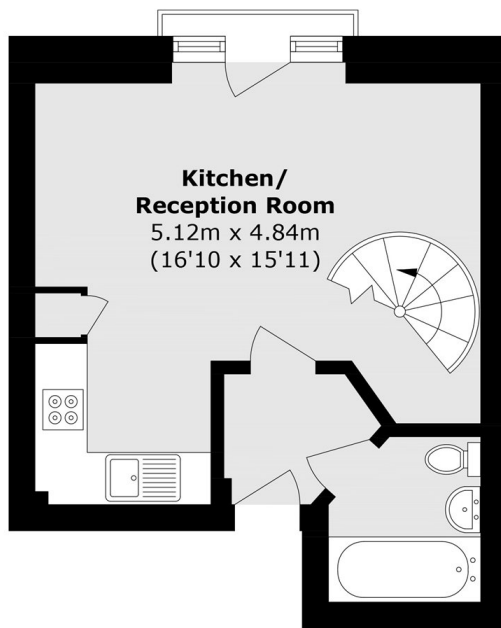
Located in the heart of Twickenham is this immaculately presented apartment featuring a modern open plan kitchen/living area with space for dining, a large floor-to-ceiling window, Juliet balcony and a stylish spiral staircase leading up to the mezzanine double bedroom with the advantage of large loft space for extra storage. Further benefits include a long lease, a contemporary bathroom and secure entry system.

Odyssey House is located moments from Twickenham Station and the high street, offering an abundance of shops, cafes, bars, restaurants.

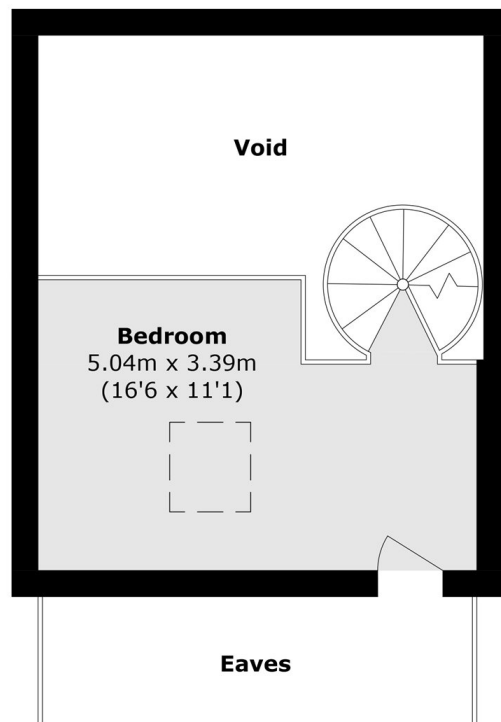
- Split Level • Central Location • Modern Throughout •
- Large Loft Space • 0.2 Miles to Station • Ideal First Purchase •

# SNELLERS

ESTATE AGENTS



**Ground Floor**



**Mezzanine**

Total area (approx.): 43.2 sq. m (465.0 sq. ft)

Snellers Twickenham Sales  
64-66 Heath Road  
Twickenham  
TW1 4BX  
020 8892 5555  
twickenhamsales@snellers.co.uk

Energy Rating: C We aim to make our particulars both accurate and reliable. However they are not guaranteed; nor do they form part of an offer or contract. If you require clarification on any points then please contact us, especially if you're traveling some distance to view. Please note that appliances and heating systems have not been tested and therefore no warranties can be given as to their good working order