



HADLOW COURT SLOUGH, SL1 3XQ

Nestled in the charming area of Hadlow Court, Slough, this delightful semi-detached house presents an excellent opportunity for those seeking a comfortable rental home. The property boasts a spacious reception room, perfect for entertaining guests or enjoying quiet evenings with family.

£1,900 PCM



1



1



3

EPC

cameron

ESTATE AGENTS

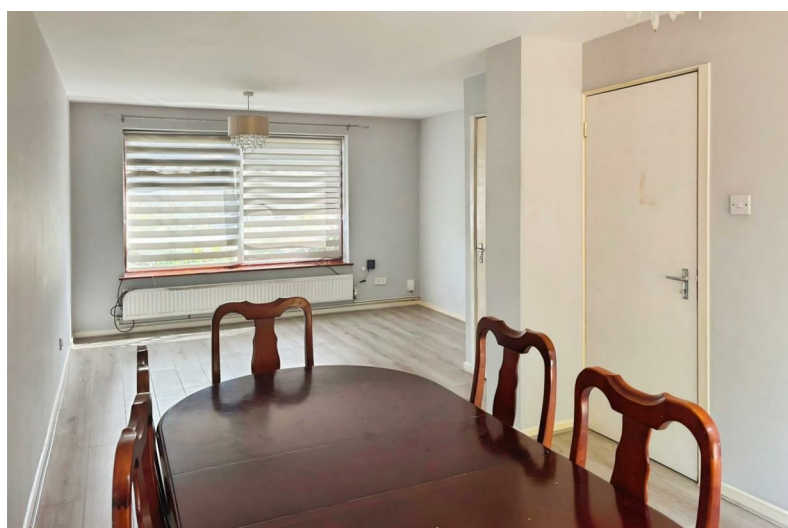
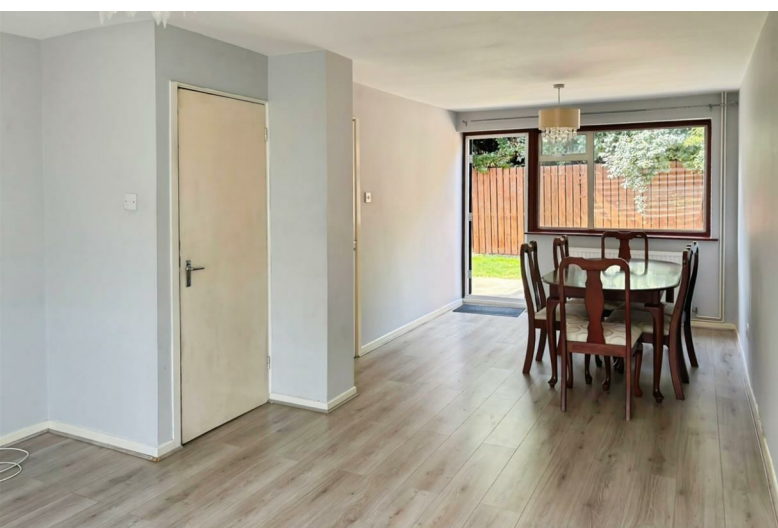
With three well-proportioned bedrooms, this residence is ideal for families or professionals looking for extra space. The bathroom is conveniently located, ensuring ease of access for all occupants.

One of the standout features of this property is the parking space available for two vehicles, a rare find in many urban settings, providing both convenience and peace of mind.

The surrounding area of Hadlow Court offers a pleasant community atmosphere, with local amenities and transport links within easy reach, making it a practical choice for daily living.

This semi-detached house is not just a place to live; it is a home where memories can be made. If you are looking for a rental property that combines comfort, space, and convenience, this charming residence in Slough is certainly worth considering.

- Available Now
- Walking Distance to Farnham Road
- Driveway Parking for 2 Cars
- 1.3 Miles from Slough Railway Station (Main Paddington Line and Crossrail Station - 20 minutes to Central London)
- Garage Included
- Easy Access to M4 Motorway



411 Bath Road, Slough, SL1 5QL
t: 01628 667442
e: sales@cameronking.co.uk

