



**Tenby Road, Enfield EN3 4JE**

**welcome to**

## **Tenby Road, Enfield**

Situated in this quiet residential cul-de-sac just minutes from local shops, supermarket, Southbury Rail Station (Weaver Line) Durants Park and within easy access of the A10, with it's retail parks, schools and Enfield Collage Sports Centre, a delightful three bedroom semi-detached family house.

Enfield Town, with it's multiple shopping centre, is close at hand and the property is offered on a chain free basis.



### Entrance Hall

Wood effect floor, double radiator, stairs to first floor.

### Lounge / Kitchen / Diner

25' 9" max x 15' 2" max ( 7.85m max x 4.62m max )

### Lounge Area

Wood effect floor, cast iron wood burner, understairs storage cupboard open to:-

### Kitchen / Diner Area

Range of matching base and wall cupboards with single bowl ceramic sink and drainer inset to worksurface, tiled splashback, plumbing for washing machine and dish washer, space for fridge freezer, integrated double oven and grill, gas hob with extractor fan over, door to lobby.

### Lobby

Doors to garden, bathroom and kitchen, storage cupboard.

### Bathroom W.C

Comprising, vanity basin with mixer tap over, cupboard under, W.C, panelled bath with mixer tap and shower attachment, curtain and rail, heated towel rail, fully tiled walls and floor, frosted window to side.

### First Floor

#### Bedroom One

15' 2" max x 10' 3" ( 4.62m max x 3.12m )

Wood effect floor, double radiator, built in wardrobe cupboard.

#### Bedroom Two

12' 6" x 8' 3" ( 3.81m x 2.51m )

Wood effect floor, double radiator.

#### Bedroom Three

9' 6" x 6' 8" ( 2.90m x 2.03m )

Wood effect floor.

### Outside

#### Front Garden

Paved for off street parking, side pedestrian access.

#### Rear Garden

Approximately 55' of seclude rear garden, paved patio, artificial lawn, bar, pagoda/seating area, shrubs and trees.



**view this property online** [barnfields.co.uk/Property/ENF105995](http://barnfields.co.uk/Property/ENF105995)



welcome to

## Tenby Road, Enfield

- Chain Free
- Three Good Sized Bedrooms
- Off Street Parking
- Cul-de-Sac Location
- Close Southbury Rail Station (Weaver Line)

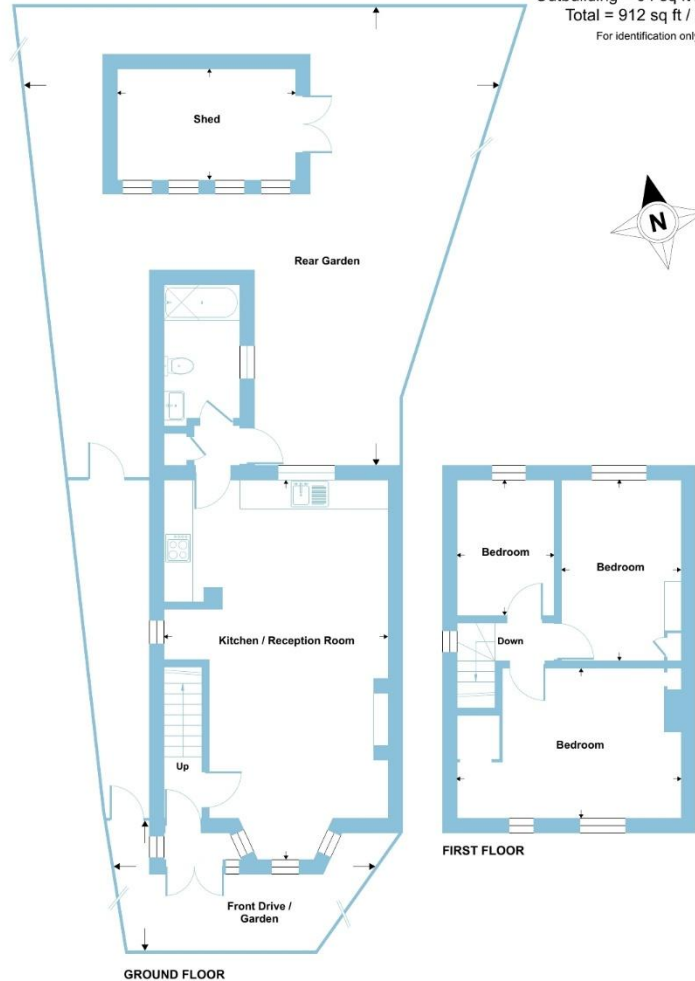
Tenure: Freehold EPC Rating: Awaited

offers in the region of  
**£450,000**



## Tenby Road, Enfield, EN3

Approximate Area = 818 sq ft / 75.9 sq m  
Outbuilding = 94 sq ft / 8.7 sq m  
Total = 912 sq ft / 84.6 sq m  
For identification only - Not to scale



Floor plan produced in accordance with RICS Property Measurement 2nd Edition, Incorporating International Property Measurement Standards (IPMS2 Residential). © ritchcom 2026. Produced for Barnard Marcus. REF: 1478797



Please note the marker reflects the postcode not the actual property

check out more properties at [barnfields.co.uk](https://www.barnfields.co.uk)



Property Ref:  
ENF105995 - 0002

1. MONEY LAUNDERING REGULATIONS Intending purchasers will be asked to produce identification documentation at a later stage and we would ask for your co-operation in order that there is no delay in agreeing the sale. 2. These particulars do not constitute part or all of an offer or contract. 3. The measurements indicated are supplied for guidance only and as such must be considered incorrect. Potential buyers are advised to recheck measurements before committing to any expense. 4. We have not tested any apparatus, equipment, fixtures or services and it is in the buyers interest to check the working condition of any appliances. 5. Where an EPC, or a Home Report (Scotland only) is held for this property, it is available for inspection at the branch by appointment. If you require a printed version of a Home Report, you will need to pay a reasonable production charge reflecting printing and other costs. 6. We are not able to offer an opinion either written or verbal on the content of these reports and this must be obtained from your legal representative. 7. Whilst we take care in preparing these reports, a buyer should ensure that his/her legal representative confirms as soon as possible all matters relating to title including the extent and boundaries of the property and other important matters before exchange of contracts.

Barnfields is a trading name of Sequence (UK) Limited which is registered in England and Wales under company number 4268443, Registered Office is Cumbria House, 16-20 Hockliffe Street, Leighton Buzzard, Bedfordshire, LU7 1GN. VAT Registration Number is 500 2481 05.



**020 8363 3394**



[info@barnfields.com](mailto:info@barnfields.com)



1a Windmill Hill, Enfield, Middlesex, EN2 6SE



[barnfields.co.uk](https://www.barnfields.co.uk)