

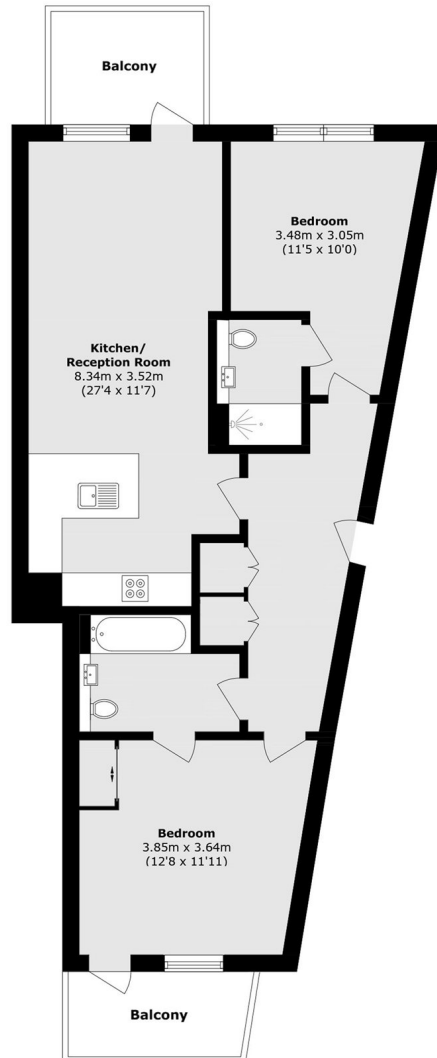


Lakeside Drive, NW10

£2,300 pw (£2,350 pcm)

An impressive two double bedroom newly built apartment with an open plan kitchen and living area, two balconies and allocated parking.

Lakeside Drive is under half a mile from both Park Royal (Piccadilly Line) and Hanger Lane (Central Line) stations, additionally there is a direct bus link to Ealing Broadway.



Second Floor

Total area (approx.): 78.9 sq. m (849.2 sq. ft)

Balcony area (approx.): 10.4 sq. m (111.9 sq. ft)

Robertson Smith & Kempson Northfields Lettings
116 Northfield Avenue,
London, W13 9RT
020 8280 2800
northfieldslettings@robertsonsmithandkempson.co.uk

Energy Rating: . We aim to make our particulars both accurate and reliable. However they are not guaranteed; nor do they form part of an offer or contract. If you require clarification on any points then please contact us, especially if you're traveling some distance to view. Please note that appliances and heating systems have not been tested and therefore no warranties can be given as to their good working order.