



SHEEN ROAD
RICHMOND

JACKSON-STOPS 

SHEEN ROAD RICHMOND, TW10

ASKING PRICE: £2,995 PCM

In a period building, this outstanding two double bedroom apartment has been finished to a very high standard throughout with high ceilings, its own private south facing roof terrace as well as a lock up garage.

The property is located on Kings Ride Gate and has a short walk to Richmond Park.

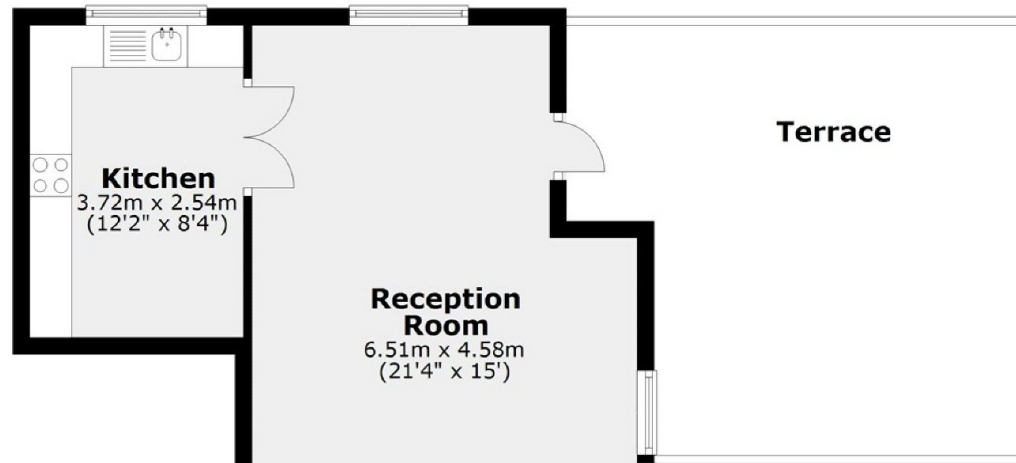


KEY FEATURES

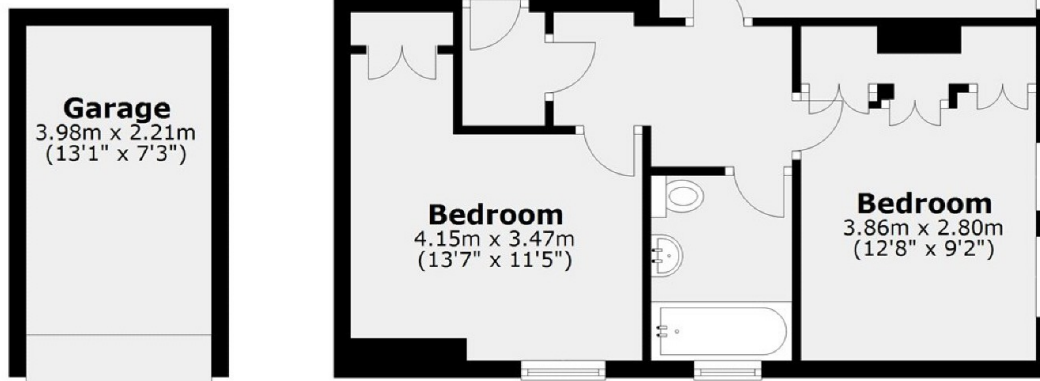
- Two Double Bedrooms
- Parking and Garage
- Immaculate Finish
Throughout
- High Ceilings
- Ample Storage Throughout



First Floor



Ground Floor



Main area: Approx. 70.6 sq. metres (759.4 sq. feet)

Plus garages, approx. 8.8 sq. metres (94.6 sq. feet)

Energy Rating: C. We aim to make our particulars both accurate and reliable. However they are not guaranteed; nor do they form part of an offer or contract. If you require clarification on any points then please contact us, especially if you are travelling some distance to view. Please note that appliances and heating systems have not been tested and therefore no warranties can be given as to their good working order.

3 LICHFIELD TERRACE, SHEEN ROAD, RICHMOND, TW9 1AS

020 8940 0066

richmond@jackson-stops.co.uk

jackson-stops.co.uk

JACKSON-STOPS 