



Holly Place, Eastbourne BN22 0UT



welcome to

Holly Place, Eastbourne

*** OPEN DAY 27TH JUNE 2026 ***

A well-presented one bedroom first floor flat featuring a spacious open plan kitchen/lounge, modern fitted kitchen and a useful utility room. The property also benefits from residents' parking, a communal entrance .



Communal Entrance

Entrance Hall

Entry phone system. Airing cupboard.

Open Plan Lounge / Kitchen

Lounge

Double glazed window to the rear aspect. Radiator.

Kitchen

A range of wall and base units with work top over incorporating a sink and drainer unit. Space for oven. Space and plumbing for washing machine. Space for fridge / freezer. Tiled.

Bedroom

Double glazed window to the rear aspect. Built in cupboard. Radiator.

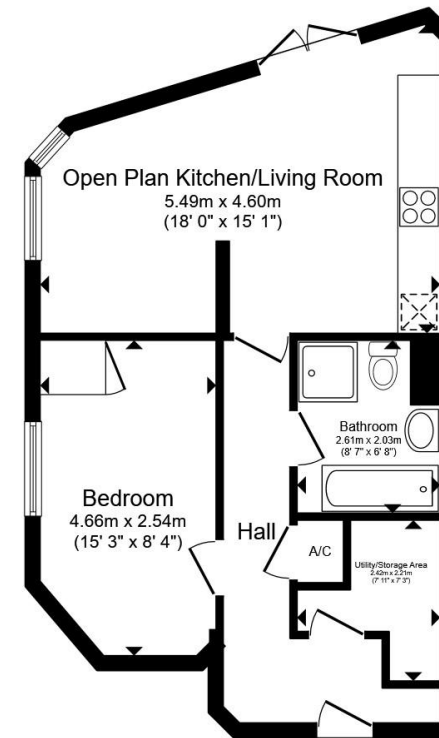
Bathroom

Comprising a bath with mixer taps and over head shower attachment. Low level W.C. Wash hand basin. Extractor fan. Tiled.

Utility Room

Parking

Residents parking available.



Ground Floor

Total floor area 48.2 m² (519 sq.ft.) approx

This floor plan is for illustrative purposes only. It is not drawn to scale. Any measurements, floor areas (including any total floor area), openings and orientation are approximate. No details are guaranteed, they cannot be relied upon for any purpose and they do not form part of any agreement. No liability is taken for any error, omission or misstatement. A party must rely upon its own inspection(s). Powered by www.propertybox.io



view this property online fox-and-sons.co.uk/Property/EBN121106



welcome to

Holly Place, Eastbourne

- *** OPEN DAY 27TH JUNE 2026 ***
- ONE BEDROOM FIRST FLOOR FLAT
- OPEN PLAN KITCHEN/LOUNGE
- MODERN FITTED KITCHEN
- SEPARATE UTILITY ROOM

Tenure: Leasehold EPC Rating: C

Council Tax Band: A Service Charge: 1200.00

Ground Rent: Ask Agent

This is a Leasehold property with details as follows; Term of Lease 125 years from 23 Oct 1989. Should you require further information please contact the branch. Please Note additional fees could be incurred for items such as Leasehold packs.

£125,000



view this property online fox-and-sons.co.uk/Property/EBN121106



Property Ref:
EBN121106 - 0003

1. MONEY LAUNDERING REGULATIONS Intending purchasers will be asked to produce identification documentation at a later stage and we would ask for your co-operation in order that there is no delay in agreeing the sale. 2. These particulars do not constitute part or all of an offer or contract. 3. The measurements indicated are supplied for guidance only and as such must be considered incorrect. Potential buyers are advised to recheck measurements before committing to any expense. 4. We have not tested any apparatus, equipment, fixtures or services and it is in the buyers interest to check the working condition of any appliances. 5. Where an EPC, or a Home Report (Scotland only) is held for this property, it is available for inspection at the branch by appointment. If you require a printed version of a Home Report, you will need to pay a reasonable production charge reflecting printing and other costs. 6. We are not able to offer an opinion either written or verbal on the content of these reports and this must be obtained from your legal representative. 7. Whilst we take care in preparing these reports, a buyer should ensure that his/her legal representative confirms as soon as possible all matters relating to title including the extent and boundaries of the property and other important matters before exchange of contracts.

Fox & Sons is a trading name of Sequence (UK) Limited which is registered in England and Wales under company number 4268443, Registered Office is Cumbria House, 16-20 Hockliffe Street, Leighton Buzzard, Bedfordshire, LU7 1GN. VAT Registration Number is 500 2481 05.



Please note the marker reflects the postcode not the actual property

fox & sons



01323 410911



Eastbourne@fox-and-sons.co.uk



19 Cornfield Road, EASTBOURNE, East Sussex,
BN21 4QD



fox-and-sons.co.uk