

# Frank Harris & Co.



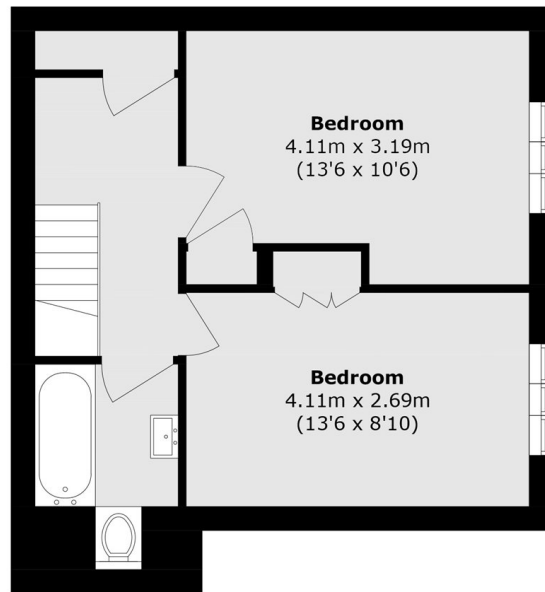
, NW1

£700,000

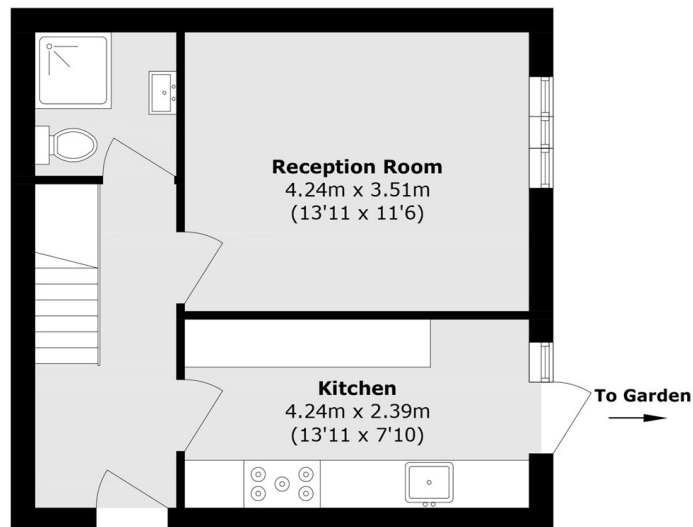
Introducing this beautifully presented two bedroom split level flat. The property has been refurbished to a high standard, offering two double bedrooms, two bathrooms, a reception room and separate kitchen. The benefits from a private patio, no chain and located right by King's Cross Station and St Pancras International Station.

Situated right by King's Cross Station offering excellent transport links via Underground, National Rail and bus services. Centrally located, there is a lot to offer: the new upmarket Coal Drop/Granary Square development with its heritage architecture, abundance of restaurants and designer shops overlooking Regents Canal. It is a short walk to Bloomsbury, London's Covent Garden and West End.

# Frank Harris & Co.



**First Floor**



**Ground Floor**

Total area (approx.): 75.6 sq. m (813.7 sq. ft)

Frank Harris & Co. Bloomsbury and Kings Cross  
81 Marchmont Street,  
London, WC1N 1AL  
020 7405 4444  
bloomsburysales@frankharris.co.uk

Energy Rating: C. We aim to make our particulars both accurate and reliable. However they are not guaranteed; nor do they form part of an offer or contract. If you require clarification on any points then please contact us, especially if you're traveling some distance to view. Please note that appliances and heating systems have not been tested and therefore no warranties can be given as to their good working order.

