

FLETCHERS

ESTATE AGENTS



Glenthorne Road, W6

£850 Per week

This newly built two bed two bath based within the Sovereign Court Development and benefits from an open-plan fully equipped kitchen/reception with direct access to a private balcony. There is also an on-site gym and 24 hour concierge services.



Beaulieu House is part of the sought after Sovereign Court development in the heart of Hammersmith which is excellently positioned for the local amenities within Brackenbury village & Hammersmith.

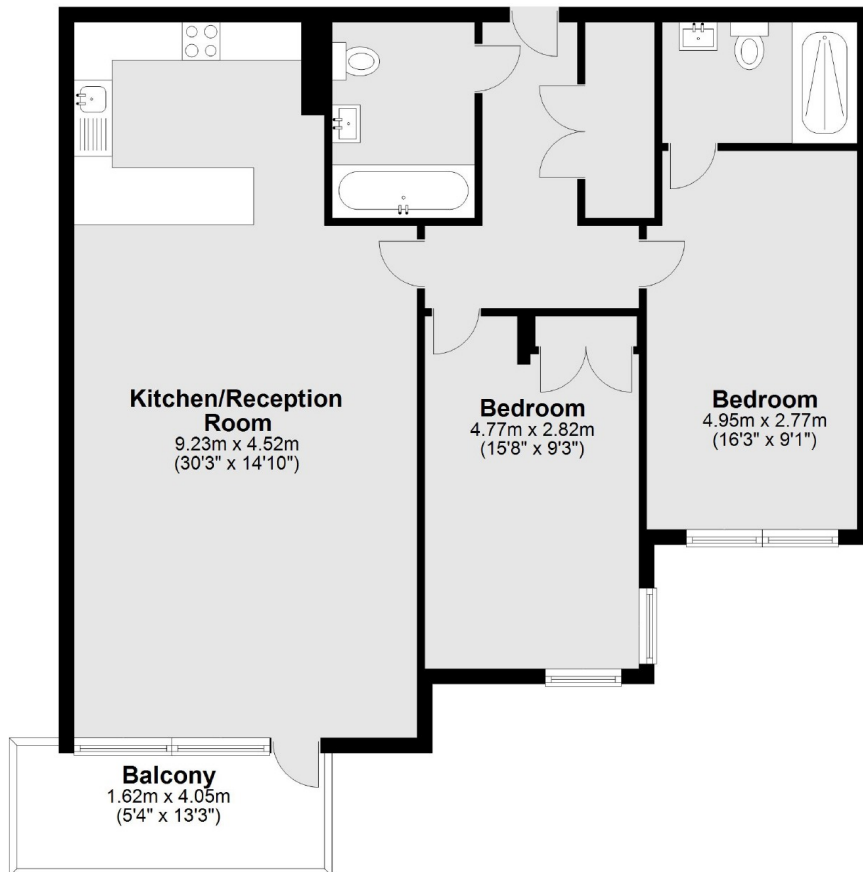
- New Build Development • Lift Access • On-site Gym •
- Allocated Parking Space • Ample Storage • Private Balcony •



FLETCHERS

ESTATE AGENTS

Second Floor



Main area: Approx. 85.7 sq. metres (922.4 sq. feet)
Plus balconies, approx. 6.6 sq. metres (70.7 sq. feet)

Fletchers Brook Green Lettings
144 Shepherds Bush Road
Hammersmith
London
W6 7PB
020 7603 0603

Energy Rating: B We aim to make our particulars both accurate and reliable. However they are not guaranteed; nor do they form part of an offer or contract. If you require clarification on any points then please contact us, especially if you're traveling some distance to view. Please note that appliances and heating systems have not been tested and therefore no warranties can be given as to their good working order