



CLAPHAM MANOR STREET, SW4

£5,000 PCM

- Terraced House
- Modern Finish
- Four Bedrooms
- Two Bathrooms
- Private Garden
- Energy Rating: C





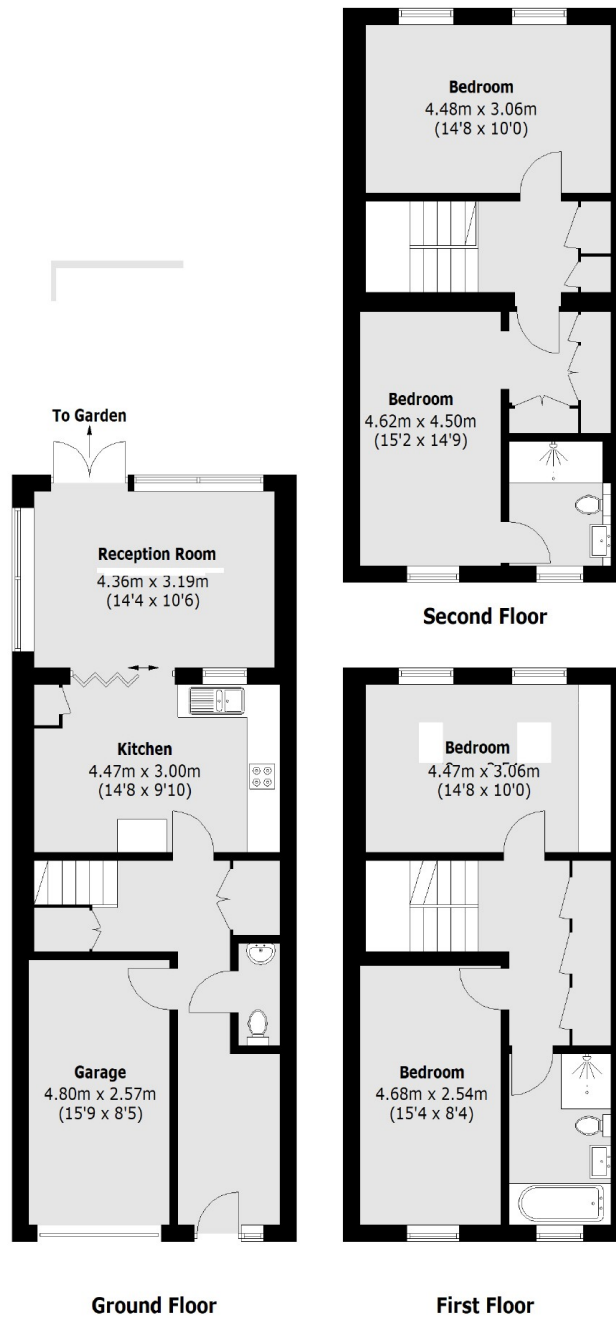
ABOUT THE HOME

An immaculately presented four bedroom house arranged over three floors. This impressive home comprises a modern kitchen, four double bedrooms, spacious reception room, private garden, a downstairs cloakroom/WC and access to a garage. Suitable for couples or a family.

Clapham Manor Street is a residential road just off of Clapham High Street with its array of popular shops, bars and restaurants. Situated just 0.5 mile from Clapham Common and Clapham North (Northern line)/ Clapham High Street (Windrush line) Overground stations, the property offers direct commuting to the City and West End.







Total area (approx.): 147.8 sq. m (1,590.9 sq. ft)
(Including Garage)

JACKSONS CLAPHAM

73 Abbeville Road, London,
SW4 9JN
Sales: 020 8487 3177
Lettings: 020 8487 3178

Energy Rating: C We aim to make our particulars both accurate and reliable. However they are not guaranteed; nor do they form part of an offer or contract. If you require clarification on any points then please contact us, especially if you're traveling some distance to view. Please note that appliances and heating systems have not been tested and therefore no warranties can be given as to their good working order.