



Newbiggen Street, Thaxted Dunmow £300,000 **Freehold**



Key Features



- Two-bedroom cottage
- No upward chain
- Grade II Listed
- Lounge and dining area
- Well Equipped Kitchen

Offered to the market with no onward chain, this charming two-bedroom Grade II listed cottage presents an exciting opportunity for buyers looking to create a home tailored to their own tastes and requirements.

While requiring a programme of modernisation, the property retains plenty of character and offers excellent potential throughout. The accommodation comprises a spacious lounge/dining room leading through to the kitchen, which in turn provides access to an inner lobby and the ground-floor bathroom.

To the first floor are two well-proportioned bedrooms, both offering comfortable living space.

Externally, the property benefits from a



generous west-facing rear garden, providing an ideal space for outdoor entertaining, gardening, or simply enjoying the afternoon and evening sunshine.

A rare opportunity to acquire a characterful Grade II listed cottage with scope for improvement, offered for sale chain free.

Thaxted is a thriving town enjoying an excellent range of facilities including a post office, Inns, restaurants, hotel, medical centre, one of the best primary schools in Essex, butchers, various shops. This town is famed for its magnificent Parish church and wealth of period properties. Thaxted is seven miles equidistance from Saffron Walden and Great Dunmow. The M11 access points and mainline railway stations, with trains to Liverpool Street, are within easy reach.

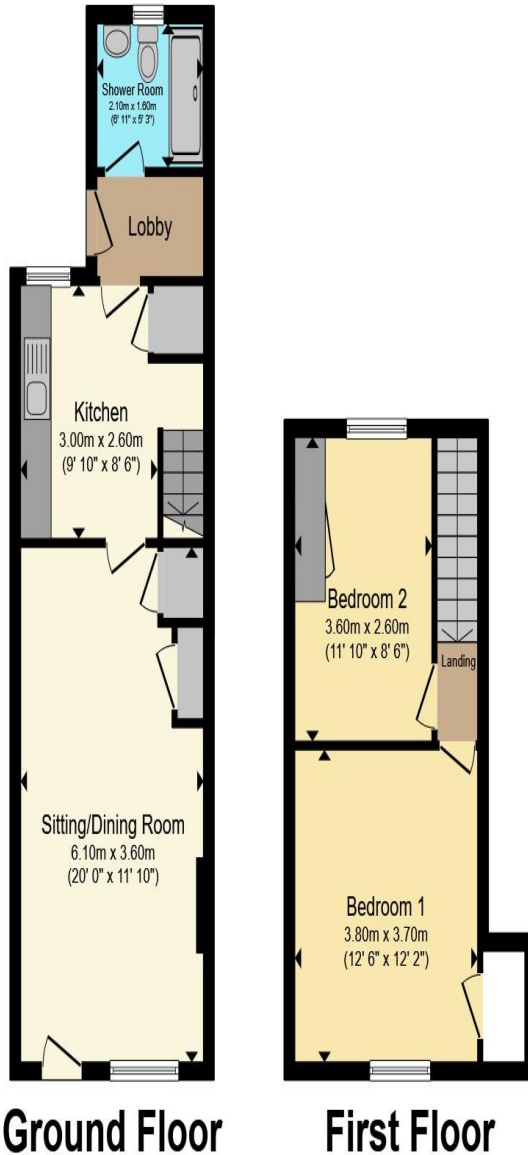
Lounge/Diner

6.10m max x 3.60m max
20'0" max x 11'10" max

Kitchen

3.00m x 2.60m
9'10" x 8'6"





Ground Floor

First Floor

Total floor area 66.4 sq.m. (715 sq.ft.) approx

This floor plan is for illustrative purposes only. It is not drawn to scale. Any measurements, floor areas (including any total floor area), openings and orientation are approximate. No details are guaranteed, they cannot be relied upon for any purpose and they do not form part of any agreement. No liability is taken for any error, omission or misstatement. A party must rely upon its own inspection(s). Powered by www.propertybox.io



Storage cupboard.

Inner Lobby

Shower Room

Bedroom One
3.80m x 3.70m
12'6" x 12'2"
Access to loft.

Bedroom Two
3.60m max x 2.60m max
11'10" max x 8'6" max

Bathroom

Garden
West facing private rear garden.

To view this property call Kevin Henry on:
01799 513632

Selling your property?

Contact us to arrange a FREE home valuation.

 01799 513632

 1 Market Street, SAFFRON WALDEN, Essex, CB10 1JB

 sales@kevinhenry.co.uk

 www.Kevinhenry.co.uk



 SCAN ME



Kevin Henry is a trading name of Sharman Quinney Holdings Limited which is registered in England and Wales under company number 4174227, Registered Office is Cumbria House, 16-20 Hockliffe Street, Leighton Buzzard, Bedfordshire, LU7 1GN. VAT Registration Number is 500 2481 05.

1: These particulars do not constitute part or all of an offer or contract. 2: The measurements indicated are supplied for guidance only and as such must be considered incorrect. 3: Potential buyers are advised to recheck the measurements before committing to any expense. 4: Kevin Henry has not tested any apparatus, equipment, fixtures, fittings or services and it is the buyers interests to check the working condition of any appliances. 5: Kevin Henry has not sought to verify the legal title of the property and buyers must obtain verification from their legal representative. 6: Intending purchasers will be asked to produce identification documentation at a later stage and we would ask your co-operation in order that there will be no delay in agreeing the sale. Ref: SAF103514 - 0002

