



**8 Moffy Hill, Maidenhead SL6 7SL**

**welcome to**

**8 Moffy Hill, Maidenhead**

A stunning three bedroom extended semi-detached family home, thoughtfully updated and significantly improved, offering stylish and contemporary living throughout.

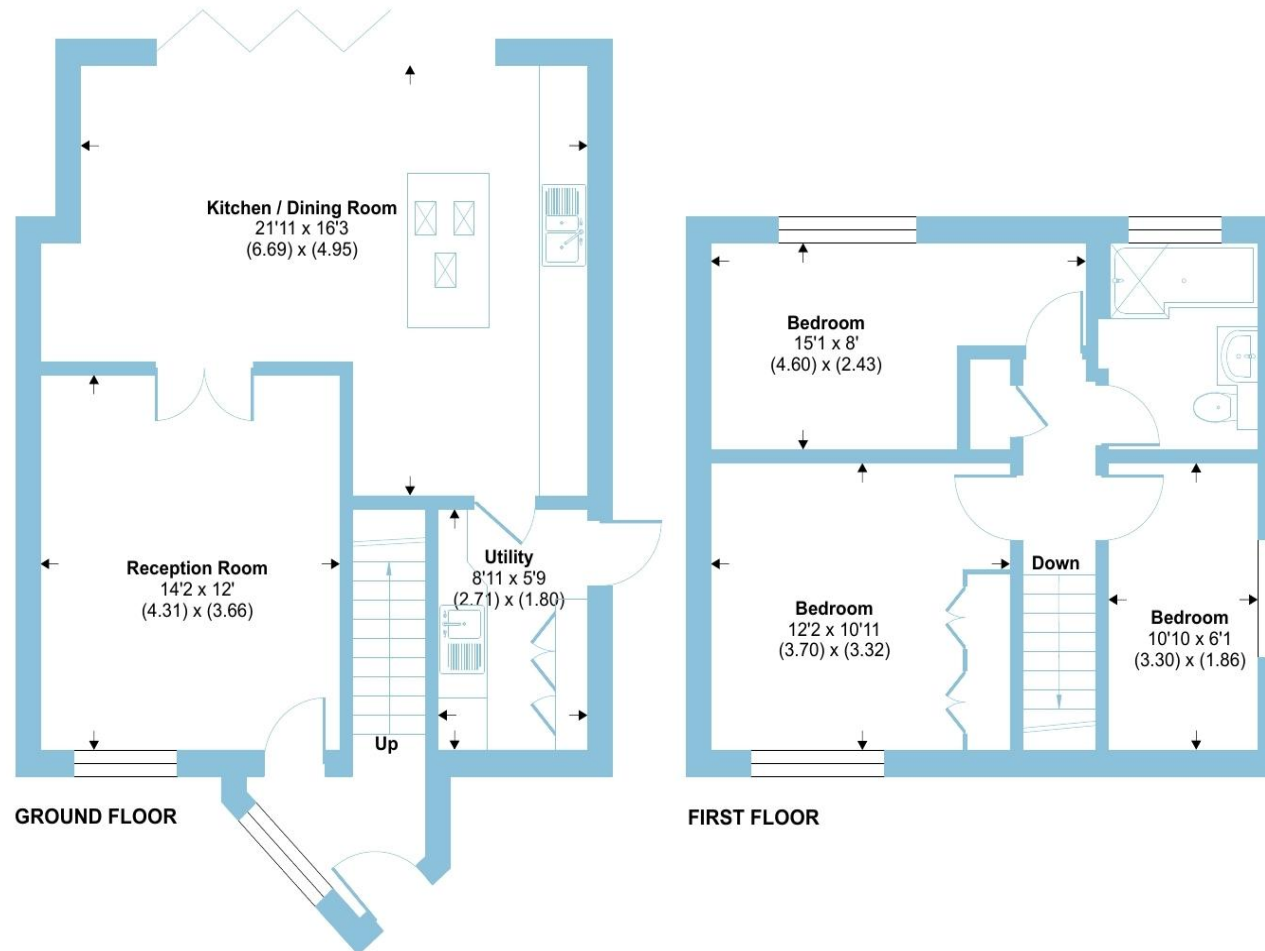




## Moffy Hill, Maidenhead, SL6

Approximate Area = 1008 sq ft / 93.6 sq m

For identification only - Not to scale



This stunning three bedroom extended semi-detached family home has been thoughtfully updated and significantly improved, offering stylish and contemporary living throughout.

Upon entering, you are welcomed into the entrance hall leading through to a generous living room, providing a comfortable and inviting space to relax. The true heart of the home is the impressive 21' x 16' kitchen/family area, which has been expertly designed and finished to a high specification. This superb space features a range of sleek contemporary units, a central island ideal for both everyday living & entertaining, and a selection of integrated appliances. Bi-fold doors span the rear of the property, flooding the room with natural light and seamlessly connecting the indoors with the garden beyond. A useful utility room is conveniently accessed from the kitchen.

Upstairs, the property continues to impress with three well-proportioned bedrooms, including a spacious main bedroom with fitted wardrobes, all served by a stylish modern family bathroom finished to a high standard.

The rear garden offers a patio seating area and a well-maintained lawn, providing a perfect space for outdoor entertaining and family enjoyment. To the front, there is driveway parking. Ideally located, the property offers easy access to the town centre and mainline station, along with being within close proximity to well-regarded local schools.

welcome to

## 8 Moffy Hill, MAIDENHEAD

- BEAUTIFUL SEMI-DETACHED HOME
- THREE BEDROOMS
- STUNNING 21' X 16' KITCHEN/FAMILY AREA
- UTILITY ROOM
- CONTEMPORARY BATHROOM
- LANDSCAPED GARDEN
- OFF STREET PARKING
- EASY ACCESS TO TOWN CENTRE & STATION

Tenure: Freehold EPC Rating: C

Council Tax Band: C

**£545,000**



Please note the marker reflects the postcode not the actual property

check out more properties at [rogerplatt.co.uk](https://rogerplatt.co.uk)



Property Ref:  
MHD122616 - 0004

1. MONEY LAUNDERING REGULATIONS Intending purchasers will be asked to produce identification documentation at a later stage and we would ask for your co-operation in order that there is no delay in agreeing the sale. 2. These particulars do not constitute part or all of an offer or contract. 3. The measurements indicated are supplied for guidance only and as such must be considered incorrect. Potential buyers are advised to recheck measurements before committing to any expense. 4. We have not tested any apparatus, equipment, fixtures or services and it is in the buyers interest to check the working condition of any appliances. 5. Where an EPC, or a Home Report (Scotland only) is held for this property, it is available for inspection at the branch by appointment. If you require a printed version of a Home Report, you will need to pay a reasonable production charge reflecting printing and other costs. 6. We are not able to offer an opinion either written or verbal on the content of these reports and this must be obtained from your legal representative. 7. Whilst we take care in preparing these reports, a buyer should ensure that his/her legal representative confirms as soon as possible all matters relating to title including the extent and boundaries of the property and other important matters before exchange of contracts.

Roger Platt is a trading name of Sequence (UK) Limited which is registered in England and Wales under company number 4268443, Registered Office is Cumbria House, 16-20 Hockliffe Street, Leighton Buzzard, Bedfordshire, LU7 1GN. VAT Registration Number is 500 2481 05.

  
roger platt



**01628 773333**



Maidenhead@rogerplatt.co.uk



25-29 Queen Street, MAIDENHEAD, Berkshire,  
SL6 1NB



**rogerplatt.co.uk**