



Hughes Crescent, £300,000

- IDEAL LOCATION FOR COMMUTERS
- ENCLOSED PRIVATE REAR GARDEN
- MOVE IN READY
- DOWNSTAIRS W.C AND UTILITY
- GAS CENTRAL HEATING AND WOOD BURNING STOVE
- EPC Rating: C
- Council Tax: D



 3  1  2



About the property

An exceptional opportunity to acquire this beautifully presented three-bedroom terraced home, ideally situated within the sought-after Garden City area of Chepstow. Thoughtfully renovated throughout, the property offers stylish, contemporary accommodation perfectly suited to modern family living.

The ground floor briefly comprises an inviting entrance porch, two generous reception rooms offering versatile living and entertaining space, a well-appointed kitchen, a useful cloakroom with utility area, and a flexible third bedroom or home office/study.

To the first floor are two well-proportioned bedrooms and a family bathroom, all presented to a high standard.

Externally, the property benefits from attractive enclosed gardens, providing a private outdoor space ideal for relaxation, family activities, and entertaining.

Further benefits include gas central heating, double glazing throughout, and a convenient location within easy reach of local amenities, including supermarkets, schools, healthcare facilities, banks, and excellent transport links to the M4 and M48 to Bristol and Cardiff. This impressive home combines character, comfort, and convenience, making it an ideal purchase for first-time buyers, families, or those seeking a property ready to move straight into.





Accommodation

Entrance Porch

Living Room

24' 4" x 14' 8" (7.42m x 4.47m)

Kitchen

9' 2" x 7' 7" (2.79m x 2.31m)

Utility

4' 10" x 2' 7" (1.47m x 0.79m)

W.C

Bedroom 3

9' x 6' 11" (2.74m x 2.11m)

Bedroom 1

14' 10" x 13' (4.52m x 3.96m)

Bedroom 2

13' x 11' 11" (3.96m x 3.63m)

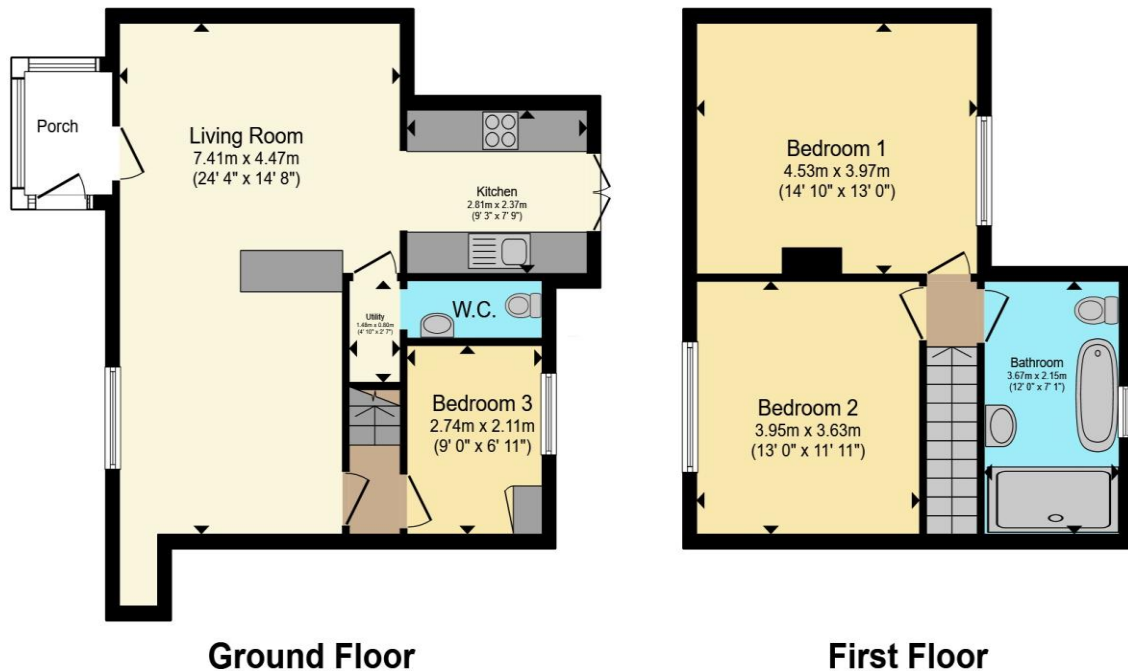
Bathroom

7' 5" x 12' 4" (2.26m x 3.76m)

01291 630876

chepstow@peteralan.co.uk

Floorplan



Total floor area 88.9 m² (957 sq.ft.) approx

This floor plan is for illustrative purposes only. It is not drawn to scale. Any measurements, floor areas (including any total floor area), openings and orientation are approximate. No details are guaranteed, they cannot be relied upon for any purpose and they do not form part of any agreement. No liability is taken for any error, omission or misstatement. A party must rely upon its own inspection(s). Powered by www.propertybox.io

Important Information

Note while we endeavour to make our sales details accurate and reliable, if there is any point which is of particular interest to you, please contact the office and we will be pleased to confirm the position for you. We have not personally tested any apparatus, equipment, fixtures, fittings or services and cannot verify they are in working order or fit for their purposes. Nothing in these particulars is intended to indicate that carpets or curtains, furnishings or fittings, electrical goods (whether wired or not). Gas fires or light fittings or any other fixtures not expressly included form part of the property offered for sale. This computer generated Floorplan, if applicable, is intended as a general guide to the layout and design of the property. It is not to scale and should not be relied upon for dimensions. Tenure: We cannot confirm the tenure of the property as we have not had access to the legal documents. The buyer is advised to obtain verification from their solicitor or surveyor.

Peter Alan Limited is registered in England and Wales under company number 2073153, Registered Office is Cumbria House, 16-20 Hockliffe Street, Leighton Buzzard, Bedfordshire, LU7 1GN. VAT Registration Number is 500 2481 05. For activities relating to regulated mortgages and non-investment insurance contracts, Peter Alan Limited is an appointed representative of Connells Limited which is authorised and regulated by the Financial Conduct Authority. Connells Limited's Financial Services Register number is 302221. Most buy-to-let