

# SNELLERS

ESTATE AGENTS



## Langdon Park, TW11

£559,950

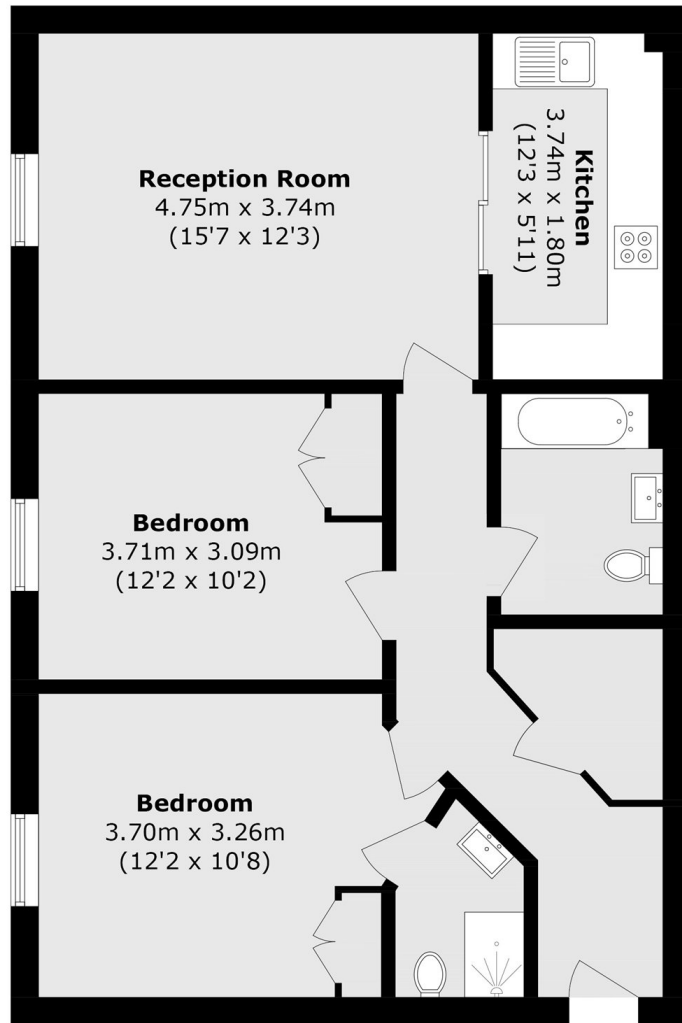
Stunning and spacious double bedroom ground floor apartment which forms part of the prestigious Langdon Park development. Benefits include a main bathroom and an en-suite shower room, an allocated parking space and access to beautiful communal gardens.

Langdon Park is located off Kingston Road, Teddington, half a mile from Hampton Wick Station which offers a direct link to London Waterloo. The River Thames is accessible at Teddington Lock and both Bushy Park and Hampton Court Park are close by.

- Two Double Bedrooms • Stunning Bathroom • En-Suite Shower Room •
- Communal Gardens • Allocated Parking Space • Excellent Condition •

# SNELLERS

ESTATE AGENTS



Total Area (approx.): 70.1 sq. m (754.5 sq. ft)

Snellers Teddington Sales  
74 Broad Street  
Teddington  
TW11 8QX  
020 8408 8040  
teddingtonsales@snellers.co.uk

Energy Rating: B We aim to make our particulars both accurate and reliable. However they are not guaranteed; nor do they form part of an offer or contract. If you require clarification on any points then please contact us, especially if you're traveling some distance to view. Please note that appliances and heating systems have not been tested and therefore no warranties can be given as to their good working order