

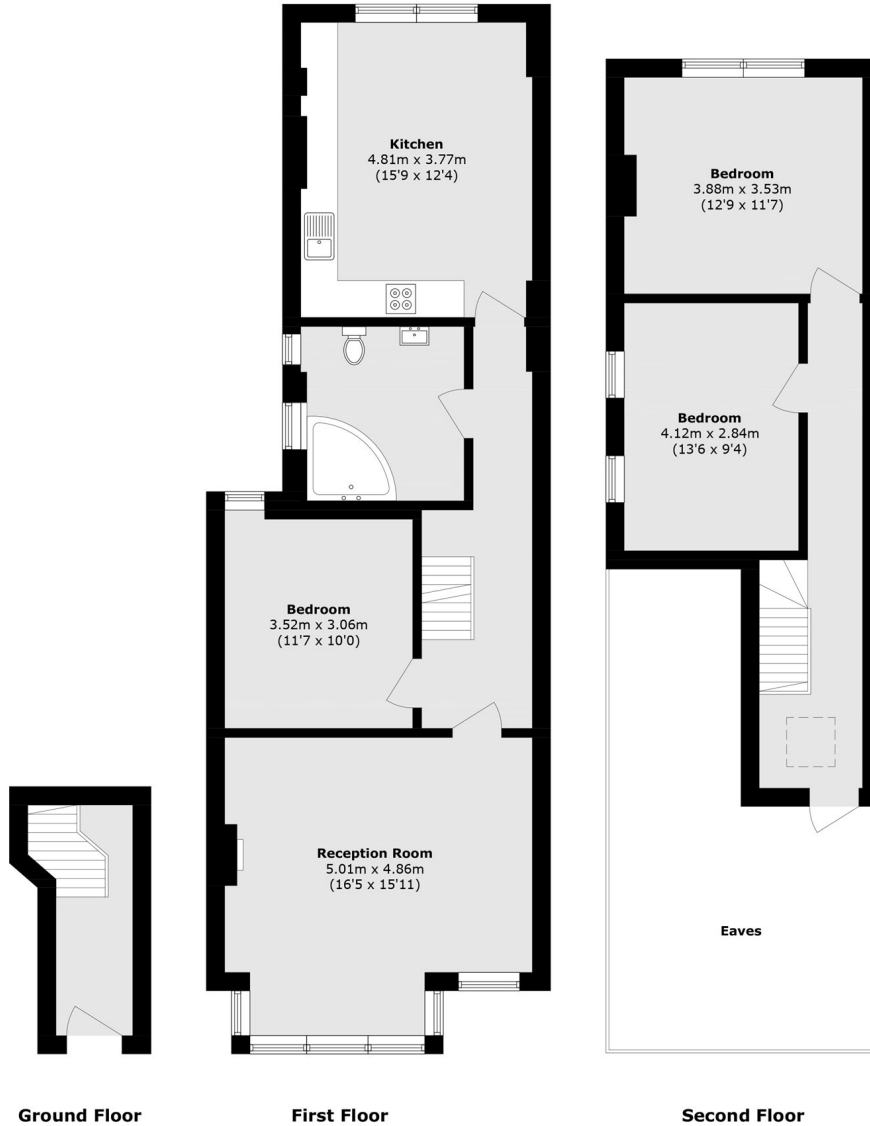


Chatsworth Gardens, W3

£625,000

A stunning three bedroom split-level maisonette located in the heart of Acton with over 1,200 sq.ft of accommodation. The property has been newly refurbished and is offered with a share of freehold, off street parking and no onward chain.

Chatsworth Gardens is in the heart of Acton and is within half a mile of both Acton Town and Ealing Common stations and Acton Main Line for the Elizabeth Line is also less than a mile away.



Total area (approx.): 112.3 sq. m (1208.8 sq. ft)
(Excluding Eaves)

Robertson Smith & Kempson Acton Sales
137 High Street, Acton,
London, W3 6LY
020 8896 3996
actonsales@robertsonsmithandkempson.co.uk

Energy Rating: . We aim to make our particulars both accurate and reliable. However they are not guaranteed; nor do they form part of an offer or contract. If you require clarification on any points then please contact us, especially if you're traveling some distance to view. Please note that appliances and heating systems have not been tested and therefore no warranties can be given as to their good working order.