



DOUNESFORTH GARDENS, SW18

£530,000

- Two double bedrooms
- Modern kitchen
- Modern bathroom suite
- Residents parking available
- Sought after location
- Energy rating: E



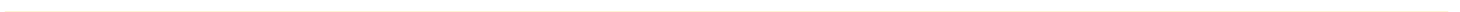


ABOUT THE HOME

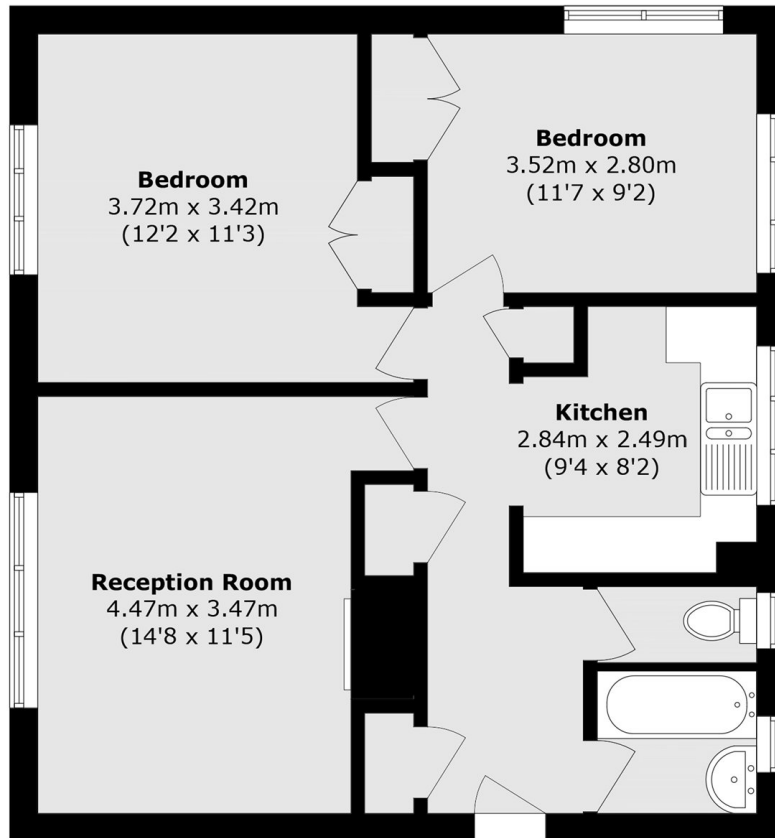
A spacious and beautifully presented two double bedroom ground floor apartment, offering bright and well-proportioned accommodation, a generous reception room with space for dining, a contemporary fitted kitchen, modern bathroom and access to communal gardens.

Accommodation comprises; a welcoming entrance hall with multiple storage cupboards, two spacious double bedrooms, a stylish bathroom suite with bath and overhead shower, and a modern fitted kitchen finished with sleek cabinetry and ample worktop space. The exceptionally bright reception room provides an ideal setting for both relaxing and entertaining, with plenty of space for a dining table and large windows allowing an abundance of natural light to flood the room.

Dounesforth Gardens is located in the heart of Earlsfield within close proximity to Earlsfield station as well as the popular amenities of Garratt Lane and open space of King Georges Park.







Total area (approx.): 63.8 sq. m (686.7 sq. ft)

JACKSONS EARLSFIELD

372-374 Garratt Lane,
Earlsfield, London, SW18 4ES
Sales: 020 8971 7979
Lettings: 020 8971 7070

Energy Rating: E We aim to make our particulars both accurate and reliable. However they are not guaranteed; nor do they form part of an offer or contract. If you require clarification on any points then please contact us, especially if you're traveling some distance to view. Please note that appliances and heating systems have not been tested and therefore no warranties can be given as to their good working order.