

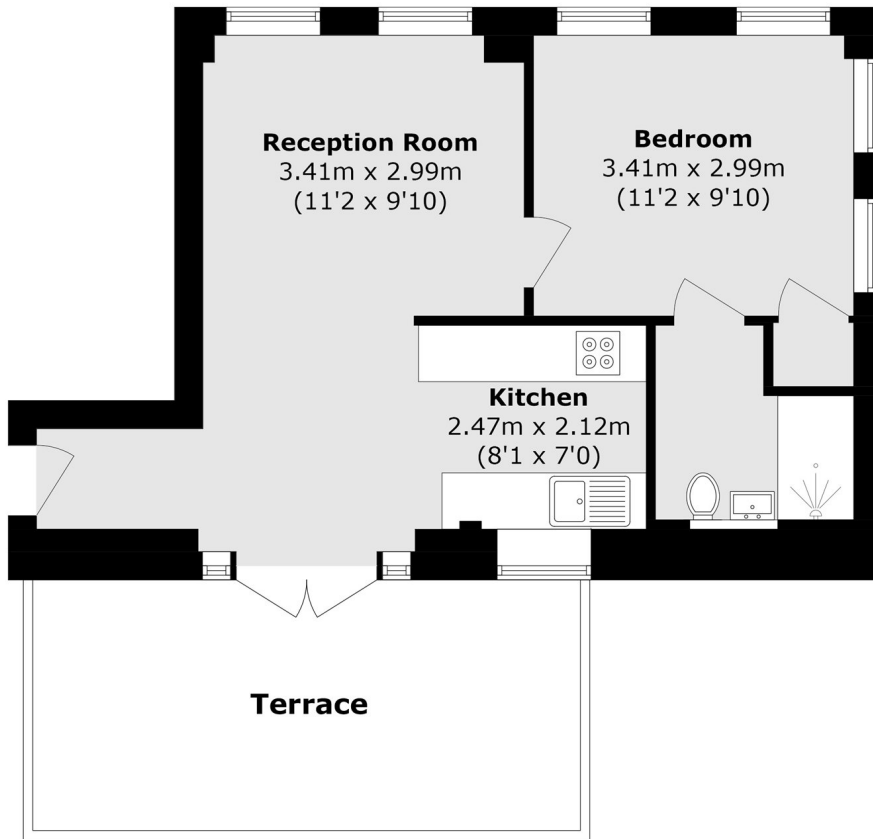


## Oldham Terrace, W3

£350,000

A modern one bedroom apartment in this converted 1920s building in the heart of Acton. The property has been finished to the highest standard and is one of the only flats in the building to benefit from a private terrace.

Oldham Terrace is located just off the High Street and within half a mile of South Acton, Acton Central and Acton Town stations offering excellent access into town.



Total Area (approx.): 38.9 sq. m (418.7 sq. ft)

Terrace Total (approx.): 15.5 sq. m (166.8 sq. ft)

Robertson Smith & Kempson Acton Sales  
137 High Street, Acton,  
London, W3 6LY  
020 8896 3996  
[actonsales@robertsonsmithandkempson.co.uk](mailto:actonsales@robertsonsmithandkempson.co.uk)

Energy Rating: D. We aim to make our particulars both accurate and reliable. However they are not guaranteed; nor do they form part of an offer or contract. If you require clarification on any points then please contact us, especially if you're traveling some distance to view. Please note that appliances and heating systems have not been tested and therefore no warranties can be given as to their good working order.