



Crofton Avenue, Yeovil, BA21 4DL

welcome to

Crofton Avenue, Yeovil

A two bedroom first floor apartment, with own private entrance, situated within close proximity to the Town Centre and Hospital. The accommodation is well presented and offers a wealth of space and natural light throughout. Externally boasting an allocated parking space.



Entrance

Own private entrance with double glazed door opening into:

Entrance Hall

Stairs rising to the first floor apartment.

Kitchen

15' 1" x 8' 8" (4.60m x 2.64m)

Double glazed window to the side. A range of fitted wall, base and drawer units with work surface over and complementary tiled surround. Single bowl stainless steel sink and drainer with mixer tap. Integrated electric hob with cooker hood over and electric oven below. Plumbing for washing machine. Space for fridge/freezer. Wall mounted boiler. Radiator.

Lounge

15' 1" x 12' 4" (4.60m x 3.76m)

A lovely light room with triple aspect double glazed windows to the front and sides. Aerial point. Space for dining table and chairs. Radiator.

Inner Hall

Airing cupboard. Radiator.

Bedroom One

Irregular Shaped Room 11' 3" x 9' 9" (3.43m x 2.97m)

Double glazed window to the front. Space for free standing furniture. Radiator.

Bedroom Two

9' 9" x 8' 8" (2.97m x 2.64m)

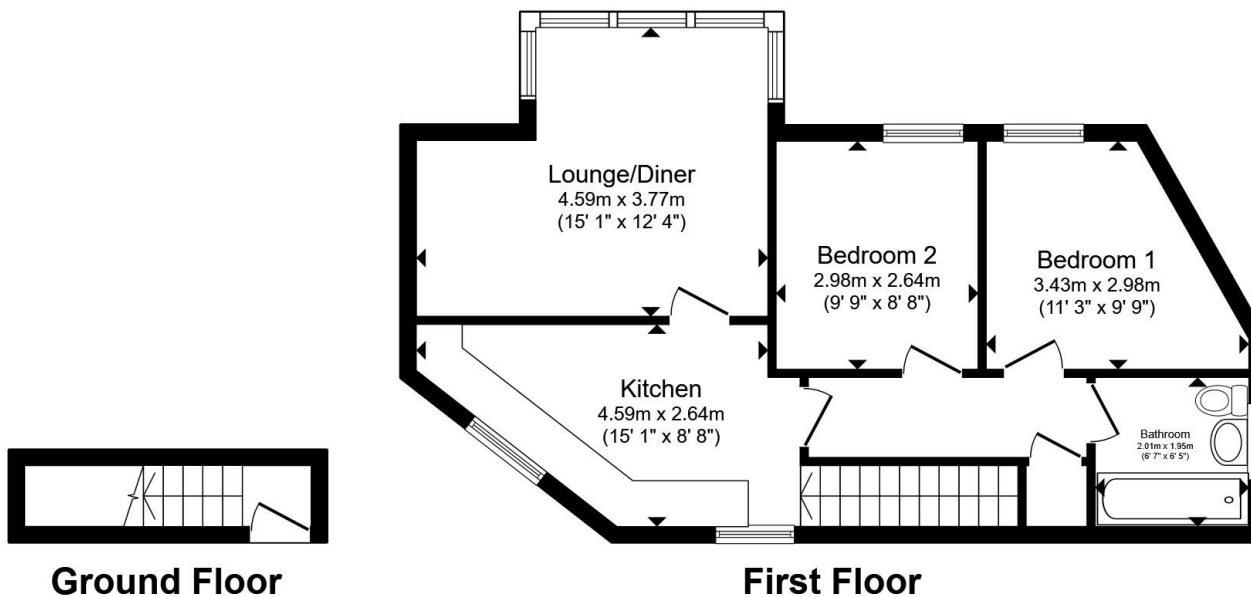
Double glazed window to the front. Space for free standing furniture. Radiator.

Bathroom

Double glazed window to the side. Suite comprising enclosed bath with mixer tap and shower attachment, wash hand basin and WC. Radiator.

Parking

There is one allocated parking space with the apartment.



Total floor area 57.6 m² (620 sq.ft.) approx

This floor plan is for illustrative purposes only. It is not drawn to scale. Any measurements, floor areas (including any total floor area), openings and orientation are approximate. No details are guaranteed, they cannot be relied upon for any purpose and they do not form part of any agreement. No liability is taken for any error, omission or misstatement. A party must rely upon its own inspection(s). Powered by www.propertybox.io



view this property online fox-and-sons.co.uk/Property/YEO109103



welcome to

Crofton Avenue, Yeovil

- First Floor Apartment
- Own Private Entrance
- Two Bedrooms
- Allocated Parking Space
- Close to Town Centre & Hospital

Tenure: Leasehold EPC Rating: C

Council Tax Band: B Service Charge: Ask Agent

Ground Rent: Ask Agent

This is a Leasehold property with details as follows; Term of Lease 999 years from 01 Jan 2022. Should you require further information please contact the branch. Please Note additional fees could be incurred for items such as Leasehold packs.

£130,000



Please note the marker reflects the postcode not the actual property

view this property online fox-and-sons.co.uk/Property/YEO109103



Property Ref:
YEO109103 - 0006

1. MONEY LAUNDERING REGULATIONS Intending purchasers will be asked to produce identification documentation at a later stage and we would ask for your co-operation in order that there is no delay in agreeing the sale. 2. These particulars do not constitute part or all of an offer or contract. 3. The measurements indicated are supplied for guidance only and as such must be considered incorrect. Potential buyers are advised to recheck measurements before committing to any expense. 4. We have not tested any apparatus, equipment, fixtures or services and it is in the buyers interest to check the working condition of any appliances. 5. Where an EPC, or a Home Report (Scotland only) is held for this property, it is available for inspection at the branch by appointment. If you require a printed version of a Home Report, you will need to pay a reasonable production charge reflecting printing and other costs. 6. We are not able to offer an opinion either written or verbal on the content of these reports and this must be obtained from your legal representative. 7. Whilst we take care in preparing these reports, a buyer should ensure that his/her legal representative confirms as soon as possible all matters relating to title including the extent and boundaries of the property and other important matters before exchange of contracts.

fox & sons



01935 412100



Yeovil@fox-and-sons.co.uk



14 Princes Street, YEOVIL, Somerset, BA20 1EW



fox-and-sons.co.uk