



DOUNESFORTH GARDENS, SW18

£475,000

- Two bedrooms
- Modern kitchen
- Beautifully finished
- Residents parking available
- Sought after location
- Energy rating: D





ABOUT THE HOME

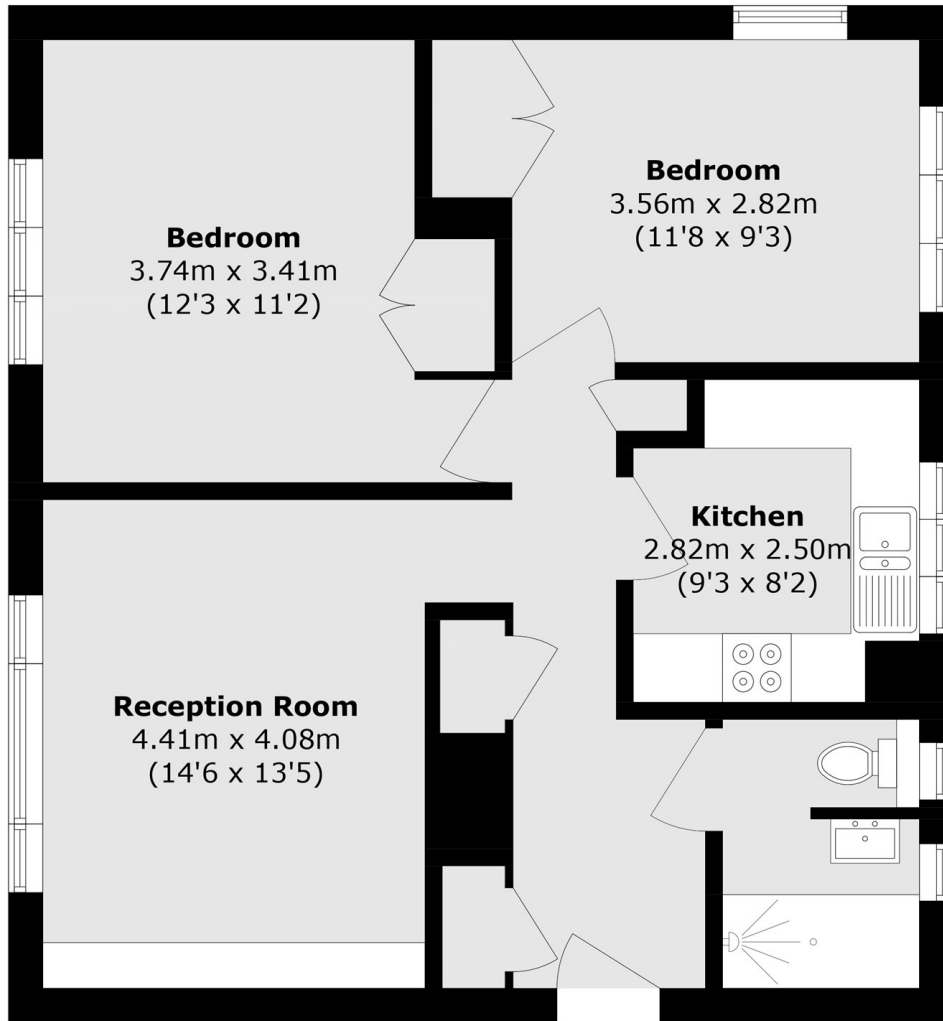
A spacious two double bedroom apartment with views overlooking King Georges Park. Including a reception room with space for dining, a modern fitted kitchen, two large double bedrooms, a modern bathroom suite and ample storage.

Accommodation comprises; spacious entrance hall and useful storage cupboards, modern spacious shower room, two double bedrooms, exceptionally generous reception room with ample dining space and stunning kitchen with views of King George's Park. The property is wonderfully bright with large windows.

Dounesforth Gardens is located in the heart of Earlsfield within close proximity to Earlsfield station as well as the popular amenities of Garratt Lane and open space of King George's Park.







Total area (approx.): 63.5 sq. m (683.5 sq. ft)

JACKSONS EARLSFIELD

372-374 Garratt Lane,
Earlsfield, London, SW18 4ES
Sales: 020 8971 7979
Lettings: 020 8971 7070

Energy Rating: D We aim to make our particulars both accurate and reliable. However they are not guaranteed; nor do they form part of an offer or contract. If you require clarification on any points then please contact us, especially if you're traveling some distance to view. Please note that appliances and heating systems have not been tested and therefore no warranties can be given as to their good working order.