

Room 8, Channel View 42 Albert Road, Clevedon, North Somerset, BS21 7RR

£765 Per Calendar Month

marktempler

RESIDENTIAL LETTINGS





PROPERTY TYPE

Room



LOCATION

Upper Clevedon



BEDROOMS

0



RECEPTION ROOMS

0



BATHROOMS

1



WARMTH

Gas central heating



PARKING

On-street



OUTSIDE SPACE

Communal



EPC RATING

Exempt



COUNCIL TAX BAND

Exempt



Furnished room within a house share

Situated on the top floor

Holding deposit - £176.53

Security deposit - £882.69

## What will it cost to rent this property?

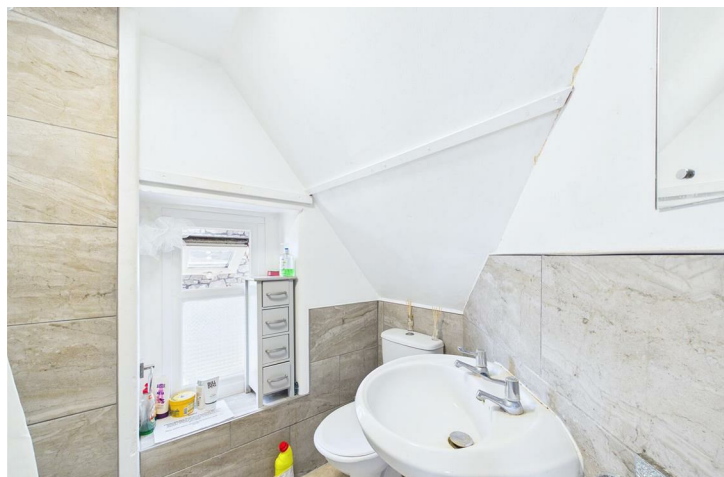
When you submit a completed application form, we will discuss the details with the Landlord. If the Landlord is happy to proceed you will be required to pay:

1. Holding deposit, equivalent to 1 week's rent. This will reserve the property.

Once references are complete, you will be asked to pay:

2. First month's rent

3. Security deposit, equivalent to 5 weeks' rent (for rents under £50,000 per year). This covers damages or defaults on the part of the tenant during the tenancy.



This room has the benefit of own-ensuite shower room  
Shared facilities include a modern kitchen, dining room and laundry room  
The rent includes the gas, electric, water and council tax bills  
Large shared garden with seating areas  
Light bright furnished room  
Easy walking distance to Hill Road shops

Available From:  
This property is available to move into from approximately 31st July 2026



**Utilities**  
Mains water and drainage, mains electric supply, gas central heating. This information has been provided by the Landlord and is correct to the best of our knowledge.

**Broadband**  
Ultrafast broadband available with highest available download speed 1800 Mbps and highest available upload speed 220 Mbps. This information is sourced via checker.ofcom.org.uk, we advise you make your own enquires.

**Mobile phone signal/coverage**  
There is limited to likely coverage indoors depending on the provider and likely coverage outdoors with a range of providers. This information is sourced via checker.ofcom.org.uk, we advise you make your own enquires.

For the latest properties and local news follow Mark Templer Residential Lettings on:



