



Sunderland Close, Upper Cambourne Cambridge  
**£575,000** **Freehold**

**Sharman  
Quinney**

# Key Features



- Immaculate Five Bedroom Detached Family Home
- Sought-after Residential Location
- Garage and Private Driveway
- Generous and Well-Maintained Private Rear Garden
- Bright and Spacious Living Areas

An exceptional five-bedroom detached residence extending to approximately 200.1 sq m (2,154 sq ft), offering beautifully appointed and highly versatile accommodation arranged over three floors, perfectly tailored to modern family living.

The property is impeccably presented throughout and opens into a welcoming central entrance hall, providing a strong sense of arrival and seamless access to the principal ground floor living spaces. The living room is generously proportioned and abundantly light-filled, creating an elegant yet comfortable setting for both everyday living and refined entertaining.

To the rear, the home truly excels with an outstanding open-plan arrangement incorporating a contemporary kitchen, dining area and family



space. Thoughtfully designed as the heart of the home, this expansive area offers a perfect balance of style and practicality, with ample space for both informal family life and larger social occasions. Direct access to the garden further enhances the sense of flow and connection between indoor and outdoor living.

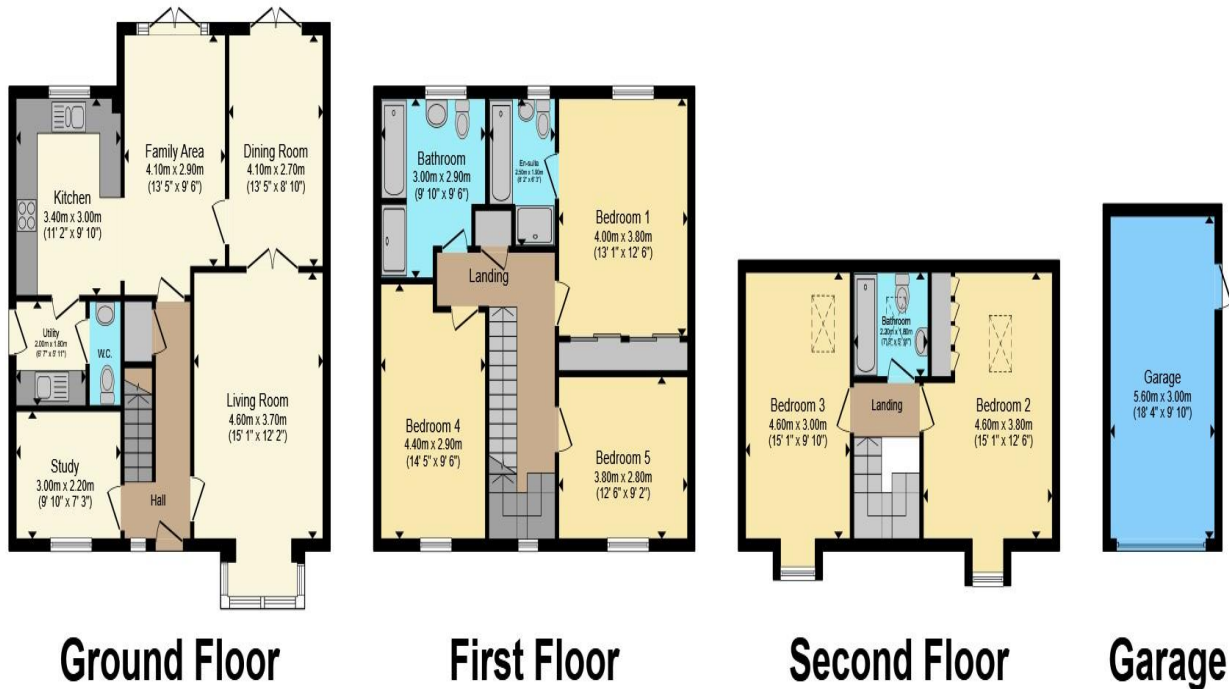
Complementing the ground floor is a well-appointed study, ideally suited to home working, along with a utility room and cloakroom, providing the level of practicality expected of a home of this calibre.

The first floor hosts three well-proportioned bedrooms arranged around a central landing. The principal suite offers a peaceful retreat, complete with a contemporary en-suite shower room. The remaining bedrooms are served by a spacious and well-finished family bathroom.

The second floor adds further flexibility, featuring two substantial bedrooms and an additional bathroom. This level is perfectly suited as a private suite for older children or guests, or as an adaptable space for home working or multi-generational living.

Externally, the property is complemented by a generous and thoughtfully landscaped rear garden, predominantly laid to lawn with mature planting, well-defined borders and patio seating areas. The garden provides an ideal environment





Total floor area 200.1 m<sup>2</sup> (2,154 sq.ft.) approx

This floor plan is for illustrative purposes only. It is not drawn to scale. Any measurements, floor areas (including any total floor area), openings and orientation are approximate. No details are guaranteed, they cannot be relied upon for any purpose and they do not form part of any agreement. No liability is taken for any error, omission or misstatement. A party must rely upon its own inspection(s). Powered by [www.propertybox.io](http://www.propertybox.io)

**Sharman  
Quinney**

for outdoor entertaining, family life and relaxation, offering both space and privacy.

To the front, the property benefits from driveway parking and access to a detached garage measuring approximately 5.60m x 3.00m.

Ideally positioned within a well-regarded residential setting, the property enjoys convenient access to a wide range of local amenities including shops, supermarkets and everyday services. Well-respected schooling for all age groups is located nearby, further enhancing the property's appeal for families.

Excellent transport connections are readily accessible, with road links providing ease of access to surrounding areas. Mainline railway stations within the locality offer regular services to Cambridge and London, making the property particularly attractive to commuters, while local bus routes provide additional connectivity.

Overall, this is a beautifully balanced home combining scale, specification and location, offering flexible accommodation across three floors and an enviable lifestyle opportunity for

To view this property call Sharman Quinney on:  
**01954 710620**

# Selling your property?

Contact us to arrange a **FREE** home valuation.

 01954 710620

 13 High Street, Cambourne, CAMBRIDGE,  
Cambridgeshire, CB23 6JX

 [cambourne@sharmanquinney.co.uk](mailto:cambourne@sharmanquinney.co.uk)

 [www.sharmanquinney.co.uk](http://www.sharmanquinney.co.uk)



 SCAN ME



Sharman Quinney Holdings Limited is registered in England and Wales under company number 4174227, Registered Office is Cumbria House, 16-20 Hockliffe Street, Leighton Buzzard, Bedfordshire, LU7 1GN. VAT Registration Number is 500 2481 05.

1: These particulars do not constitute part or all of an offer or contract. 2: The measurements indicated are supplied for guidance only and as such must be considered incorrect. 3: Potential buyers are advised to recheck the measurements before committing to any expense. 4: Sharman Quinney has not tested any apparatus, equipment, fixtures, fittings or services and it is the buyers interests to check the working condition of any appliances. 5: Sharman Quinney has not sought to verify the legal title of the property and buyers must obtain verification from their legal representative. 6: Intending purchasers will be asked to produce identification documentation at a later stage and we would ask your co-operation in order that there will be no delay in agreeing the sale. Ref: CSQ204419 - 0003

