



**PLOUGH LANE**  
TEDDINGTON

**JACKSON-STOPS** 

## PLOUGH LANE, TEDDINGTON, TW11

ASKING PRICE: £1,575 PCM

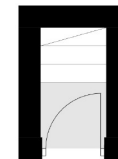
With the advantage of your own entrance and ideally and suited to a single professional or couple, this very bright and airy one double bedroom apartment is now available to view. Set in the heart of Teddington Village.

The High Street is the central hub for all that Teddington offers. A superb spot if you are looking for school catchments and transport, as well as being surrounded by the best shops and restaurants along with the River Thames and Bushy Park.

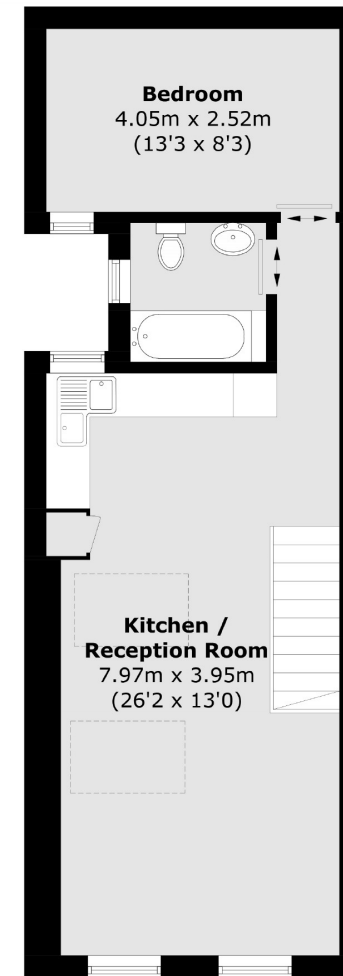
### KEY FEATURES

- One Bedroom Flat
- Open Plan Living
- Fully Fitted Kitchen
- Modern Bathroom
- Bright
- In Good Condition

Energy Rating: . We aim to make our particulars both accurate and reliable. However they are not guaranteed; nor do they form part of an offer or contract. If you require clarification on any points then please contact us, especially if you are travelling some distance to view. Please note that appliances and heating systems have not been tested and therefore no warranties can be given as to their good working order.



Ground Floor



**Bedroom**  
4.05m x 2.52m  
(13'3 x 8'3)

**Kitchen /  
Reception Room**  
7.97m x 3.95m  
(26'2 x 13'0)

First Floor

Total area (approx.): 48.5 sq. m (522.0 sq. ft)

ASKING PRICE: £1,575 PCM

TEDDINGTON

020 8943 9955

teddingtonlettings@jackson-stops.com

jackson-stops.co.uk

JACKSON-STOPS 