

Frank Harris & Co.



Waterloo, SE1

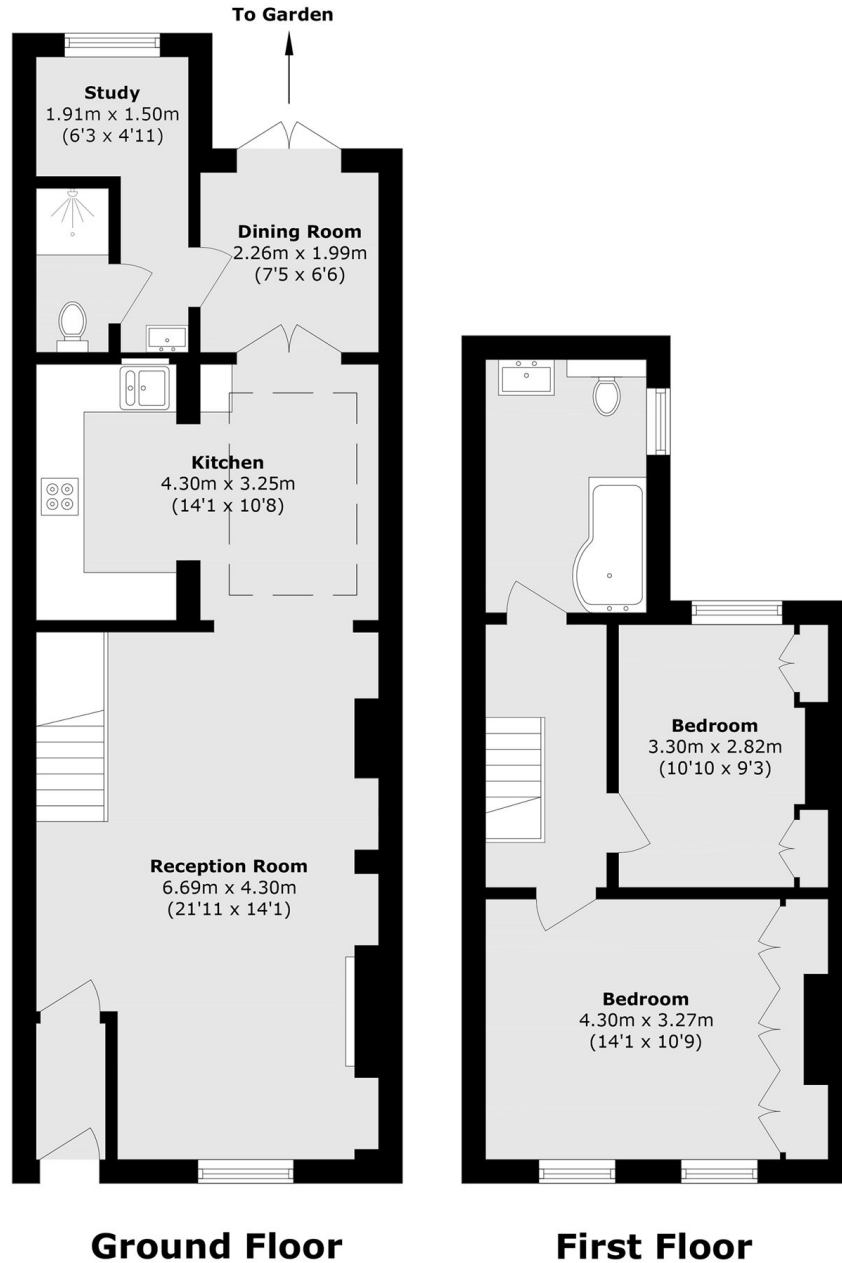
£3,750 pcm

Beautiful two storey period house, which features two double bedrooms, two bathrooms, an additional study, living room and semi-open plan kitchen which leads to a private garden.

Close to Waterloo Station, Southwark tube and the many eclectic shops, bars, restaurants and theatres along The Cut together with many leisure facilities that the South Bank offers including, the Tate Modern, Royal Festival Hall and Borough Market towards London Bridge.

- Period House • Two Bedrooms • Two Bathrooms •
- Study • Outside Space • Furnished •

Frank Harris & Co.



Total area (approx.): 91.7 sq. m (987.0 sq. ft)

Frank Harris & Co. South Bank and Waterloo
123 Stamford Street, London,
SE1 9NN
020 7590 7100
southbanklettings@frankharris.co.uk

Energy Rating: . We aim to make our particulars both accurate and reliable. However they are not guaranteed; nor do they form part of an offer or contract. If you require clarification on any points then please contact us, especially if you're traveling some distance to view. Please note that appliances and heating systems have not been tested and therefore no warranties can be given as to their good working order.

