



TYLECROFT ROAD, SW16

£550,000

- Fully extended family home
- Three double bedrooms
- Close to Norbury station
- Excellent condition throughout
- Landscaped garden
- Energy rating: E





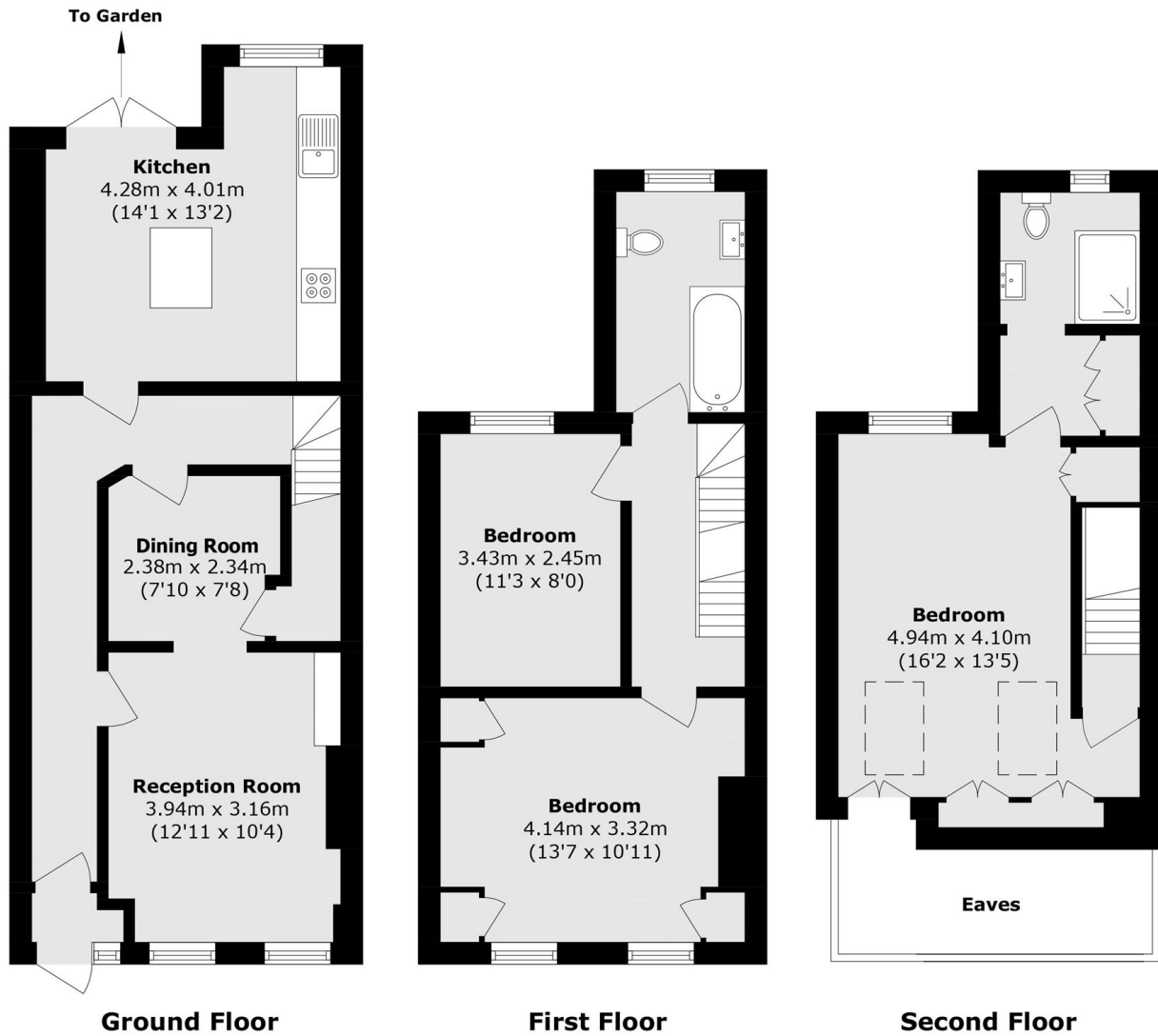
ABOUT THE HOME

A fully extended family home in great condition, offering generous living space and three double bedrooms, including a master with en-suite with walk in wardrobe. The house has a lovely private garden, open plan kitchen, separate reception and study and is located a short walk from Norbury train station.

Tylecroft road is a popular residential road in Norbury only a short distance from Norbury High Street offering a range shops, cafés and other amenities. Norbury station is nearby and offers regular links into both Victoria and London Bridge.







Total area (approx): 108.5 sq. m (1167.8 sq. ft)
(Excluding Eaves)

JACKSONS STREATHAM

1-3 De Montfort Parade,
Streatham High Road,
Sales: 020 8487 3179
Lettings: 020 8487 3180

Energy Rating: E We aim to make our particulars both accurate and reliable. However they are not guaranteed; nor do they form part of an offer or contract. If you require clarification on any points then please contact us, especially if you're traveling some distance to view. Please note that appliances and heating systems have not been tested and therefore no warranties can be given as to their good working order.