

Frank Harris & Co.



Downing Court, WC1N

£3,100 pcm

A spacious two-bedroom flat set within a secure and well-maintained mansion block, offering generous living accommodation and a comfortable layout throughout. Residents benefit from lift access and a daytime porter. Heating and hot water included in the rent.

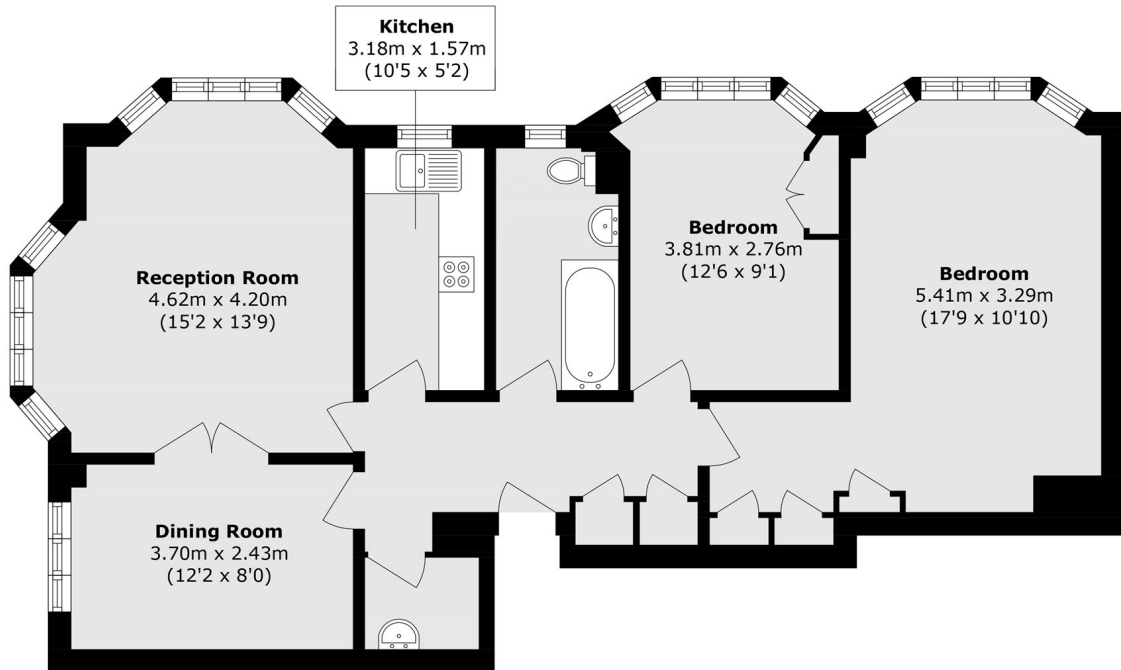


Downing Court is just moments from the vibrant Brunswick Centre with its excellent selection of shops, cafés, and restaurants. Russell Square and its beautiful gardens are also within walking distance, alongside superb transport links and the amenities of central London.

- Two Bedrooms • Lift Access • Porter Building •
- Secure Building • Available Immediately • Heating & Hot Water Included •
- 80 Sq M •



Frank Harris & Co.



Second Floor

Total area (approx.): 81.0 sq. m (871.9 sq. ft)

Frank Harris & Co. Bloomsbury and Kings Cross
81 Marchmont Street, London,
WC1N 1AL
020 7387 0077
bloomsburylettings@frankharris.co.uk

Energy Rating: C. We aim to make our particulars both accurate and reliable. However they are not guaranteed; nor do they form part of an offer or contract. If you require clarification on any points then please contact us, especially if you're traveling some distance to view. Please note that appliances and heating systems have not been tested and therefore no warranties can be given as to their good working order.

