



## Watts Street, E1W

£500,000

 2  1  1  C

- Green Bank Estate
- Low Service Charge
- Permit Parking

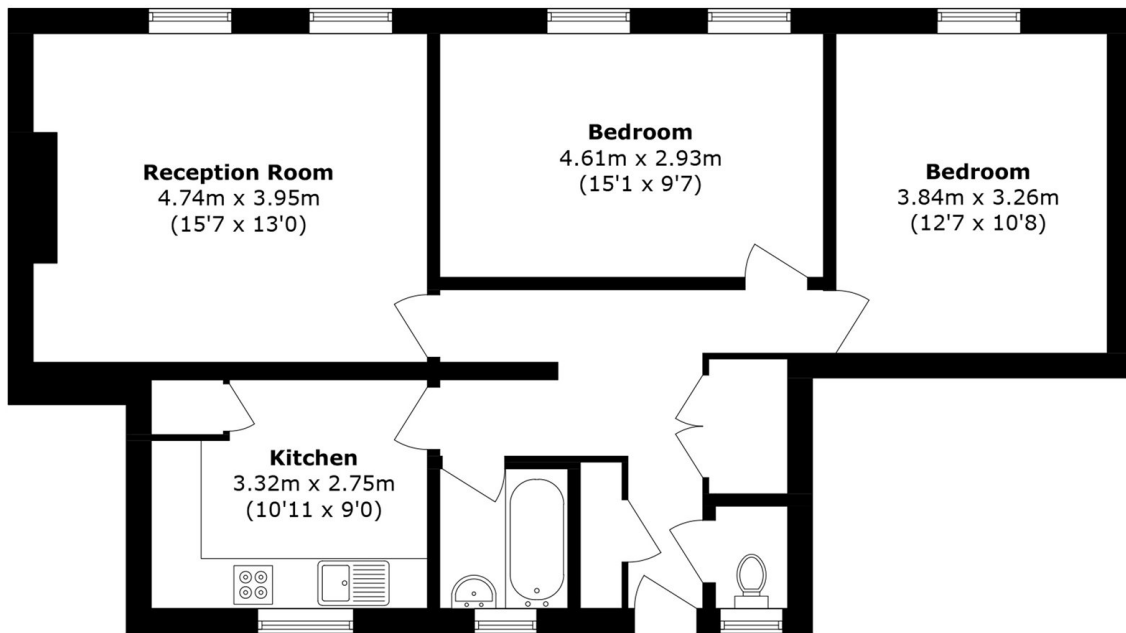
- Low Ground Rent
- Central Wapping
- Two Double Bedrooms



Offered to the market is this two bedroom home in the sought after development, Green Bank Estate. Features to include low ground rent and service charge, and permit parking.

Ideally located approximately 0.2 miles from Wapping Overground Station. In walking distance to the historical St Katharine's Docks. There are also regular bus routes ideal for travelling to Canary Wharf, The City and beyond.





Total Area (approx.): 73.2 sq. m (787.9 sq. ft)

35A Wapping High Street,  
London, E1W 1NR  
020 7665 5589  
ea2group.com