



Rose Joan Mews (NOT ONLINE), NW6 TO LET - £1,550 Per Month

Split-level contemporary studio flat set within a private road in the gated development of Rose Joan Mews, moments from Fortune Green Park. Finished to a good standard throughout, the property features wood flooring and a fully fitted kitchen.

Ideally positioned in the heart of West Hampstead Village, this quiet mews location is only a short walk from West Hampstead Underground, Thameslink and Overground stations. Fortune Green Park is on the doorstep, along with the cafés, restaurants and shops of West End Lane.



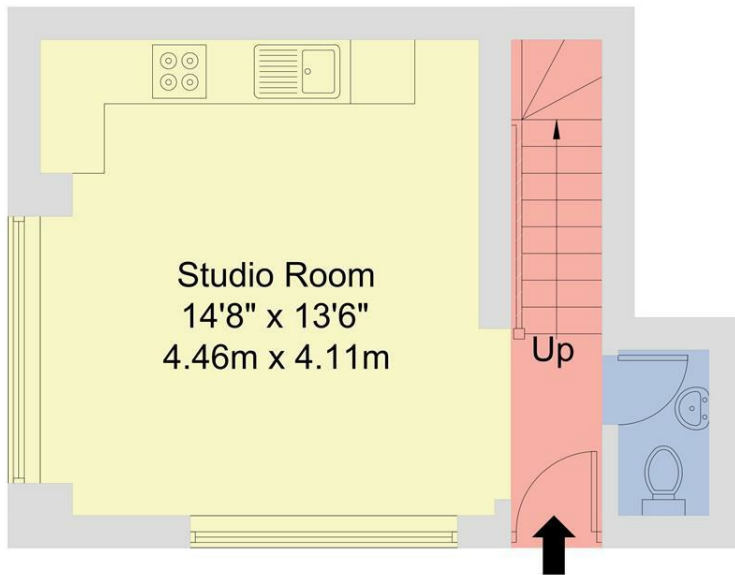
020 8450 9377

rentals@cameronsstiff.co.uk

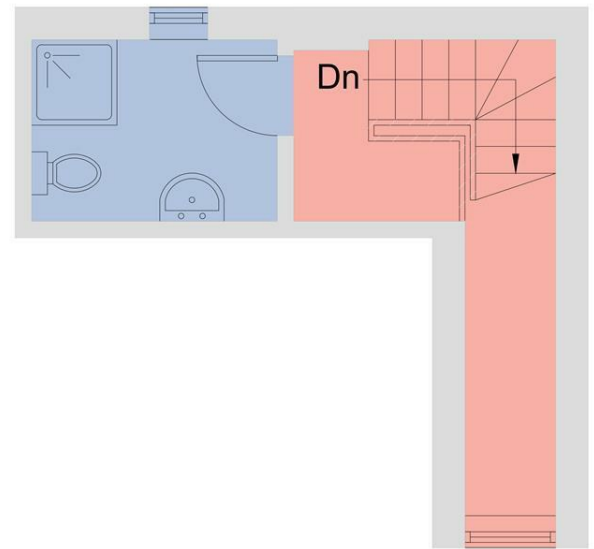
cameronsstiff.co.uk



Rose Joan Mews, NW6
Approximate Area = 35.6 sq m / 383 sq ft
For Identification only - Not to Scale



GROUND FLOOR



FIRST FLOOR

Disclaimer : Floorplan measurements are approximate and are for illustrative purposes only. While we do not doubt the floorplan accuracy and completeness, you or your advisors should conduct a careful, independent investigation of the property in respect of monetary valuation.

EPC: C
Ref: 19789821

