



**Hillside Way, Withdean, Brighton, BN1 5FE**

**welcome to**

**Hillside Way, Withdean, Brighton**

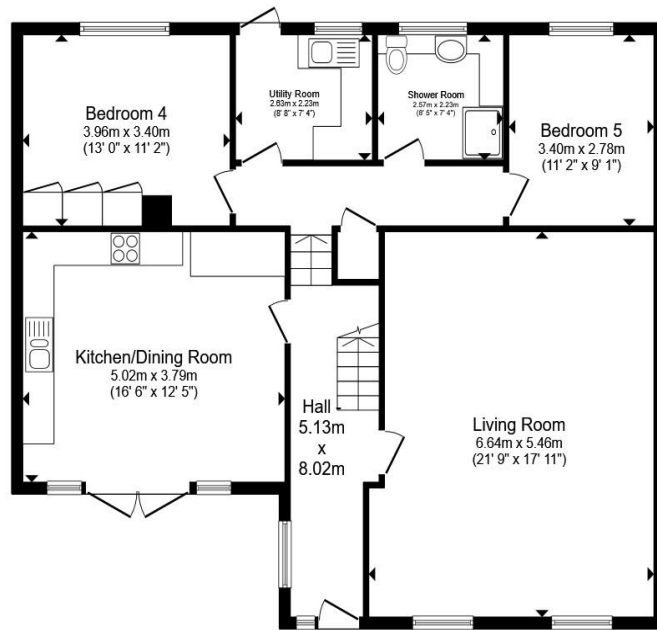
Set in sought-after Withdean, this striking gated detached home delivers space, style and privacy. Five generous bedrooms, two bathrooms and a standout vaulted landing. Luxurious principal suite and two landscaped gardens—perfect for modern family living and entertaining.



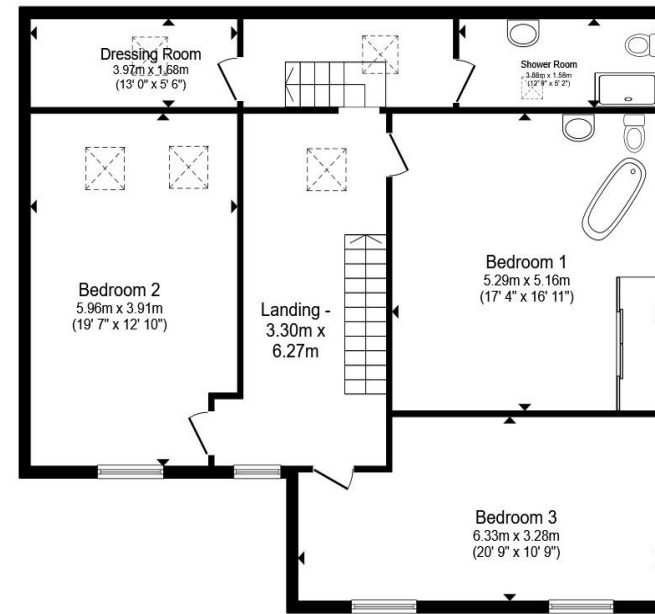
Set within the sought-after locale of Withdean, this impressive detached modern residence seamlessly blends style, comfort, and practicality. Securely nestled behind a gated driveway, the property ensures privacy while offering a striking entrance. The spacious accommodation features five generous bedrooms and two bathrooms, presenting the perfect setting for family life or entertaining guests.

Step inside through the welcoming entrance this multi level home creates plenty of opportunity for each member of the family, creating a light, airy ambiance and an undeniable sense of space. The centrepiece of the home, the expansive landing, connecting a cluster of rooms further elevates the interior architecture with its impressive vaulted design. There's no shortage of indulgence throughout, with the principal suite adding a layer of luxury thanks to a beautiful free-standing bath—an ideal retreat after a long day.

Two distinct garden areas provide opportunities for relaxation and al fresco entertaining, perfectly complementing the leafy peace of the surroundings. Meticulously maintained and boasting well-conditioned interiors throughout, this home offers an opportunity to embrace modern living in comfort and style.



**Ground Floor**



**First Floor**

Total floor area 225.5 m<sup>2</sup> (2,427 sq.ft.) approx

This floor plan is for illustrative purposes only. It is not drawn to scale. Any measurements, floor areas (including any total floor area), openings and orientation are approximate. No details are guaranteed, they cannot be relied upon for any purpose and they do not form part of any agreement. No liability is taken for any error, omission or misstatement. A party must rely upon its own inspection(s). Powered by [www.propertybox.io](http://www.propertybox.io)

## welcome to Hillside Way, Withdean, Brighton

- SECURELY GATED AND PRIVATE DETACHED HOME
- FIVE DOUBLE BEDROOMS AND TWO BATHROOMS
- STUNNING VAULTED CEILINGS
- MULTIPLE OUTDOOR GARDEN SPACES
- LARGE KITCHEN BREAKFAST ROOM & SEPARATE UTILITY ROOM
- CATCHMENT AREA FOR OUTSTANDING SCHOOLS
- SHORT DISTANCE TO WITHDEAN SPORTS COMPLEX WITH PADEL & GYM
- EASY ACCESS TO A27, A23 AND GATWICK AIRPORT

Tenure: Freehold EPC Rating: C

Council Tax Band: G

# £1,000,000



Please note the marker reflects the postcode not the actual property

**view this property online** [fox-and-sons.co.uk/Property/PRP106321](https://fox-and-sons.co.uk/Property/PRP106321)



Property Ref:  
PRP106321 - 0004

1. MONEY LAUNDERING REGULATIONS Intending purchasers will be asked to produce identification documentation at a later stage and we would ask for your co-operation in order that there is no delay in agreeing the sale. 2. These particulars do not constitute part or all of an offer or contract. 3. The measurements indicated are supplied for guidance only and as such must be considered incorrect. Potential buyers are advised to recheck measurements before committing to any expense. 4. We have not tested any apparatus, equipment, fixtures or services and it is in the buyers interest to check the working condition of any appliances. 5. Where an EPC, or a Home Report (Scotland only) is held for this property, it is available for inspection at the branch by appointment. If you require a printed version of a Home Report, you will need to pay a reasonable production charge reflecting printing and other costs. 6. We are not able to offer an opinion either written or verbal on the content of these reports and this must be obtained from your legal representative. 7. Whilst we take care in preparing these reports, a buyer should ensure that his/her legal representative confirms as soon as possible all matters relating to title including the extent and boundaries of the property and other important matters before exchange of contracts.

  
fox & sons



**01273 508761**



[PrestonPark@fox-and-sons.co.uk](mailto:PrestonPark@fox-and-sons.co.uk)



205 Preston Road, BRIGHTON, East Sussex,  
BN1 6SA



**[fox-and-sons.co.uk](https://fox-and-sons.co.uk)**