



Ambermere The Street, Thorndon Eye IP23 7JN



welcome to

Ambermere The Street, Thorndon Eye

A four-bedroom detached home in the peaceful village of Thorndon, featuring a lounge with wood burner, stylish kitchen, multiple reception rooms & conservatory. Upstairs offers four bedrooms including a primary with en-suite. Outside offers a lovely wraparound garden, driveway & double garage.

Entrance Hall

Stair access, radiator, hard flooring.

Cloakroom

Window to front aspect, radiator, w/c, wash basin.

Study

10' 4" x 7' 9" (3.15m x 2.36m)

Window to rear and side aspect, radiator, hard flooring.

Lounge

18' x 14' 3" Max (5.49m x 4.34m Max)

Window to front aspect, French doors to side aspect, two radiators, wood burner, hard flooring.

Dining Room

12' 4" x 9' 9" (3.76m x 2.97m)

Window to rear aspect, radiator, access to kitchen, hard flooring.

Kitchen

17' 1" x 11' 9" Max (5.21m x 3.58m Max)

Window to rear aspect, wall and base units, integrated fridge and dishwasher, radiator, electric hob, extractor fan.

Utility Room

Irregular Shaped Room 9' 11" x 7' 7" (3.02m x 2.31m)

Back door, space for washing machine, tiled flooring.

Conservatory

11' 7" x 8' (3.53m x 2.44m)

Double glazed windows, under floor heating.

Landing

Window to rear aspect, airing cupboard, access to flat roof, storage, loft hatch, carpet flooring.

Bedroom 1

12' 1" x 11' 9" (3.68m x 3.58m)

Window to rear aspect, access to ensuite, radiator, wooden flooring.

Ensuite

Window to rear aspect, walk in shower, w/c, wash basin.

Bedroom 2

11' 1" x 10' 10" (3.38m x 3.30m)

Window to rear aspect, radiator, carpet flooring.

Bedroom 3

12' 8" x 8' 9" (3.86m x 2.67m)

Window to front and side aspect, radiator, laminate flooring.

Bedroom 4

8' 11" x 7' 2" (2.72m x 2.18m)

Window to front aspect, radiator, wooden flooring.

Bathroom

Window to front aspect, electric shower, bath tub, W/C, wash basin, heated towel rail, tiled flooring and walls.

Loft Space

Not boarded

Rear Garden

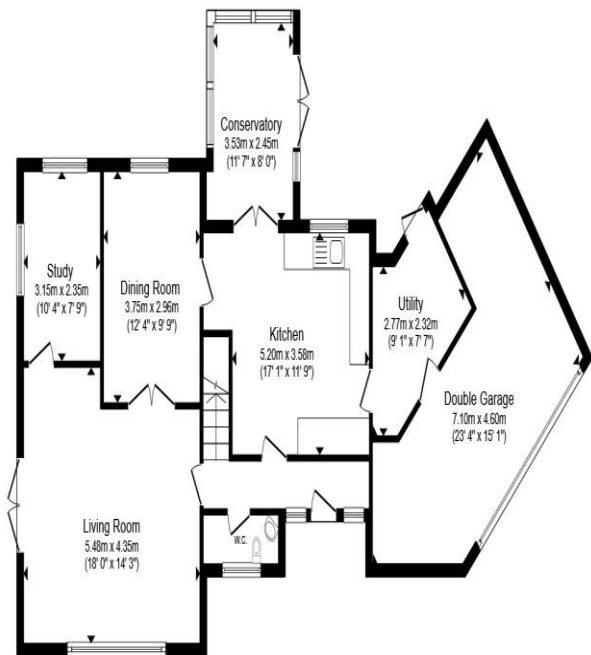
The garden is a wrap around garden with a shingled area, majority of it is turfed with a garden shed and oil tank.

Parking

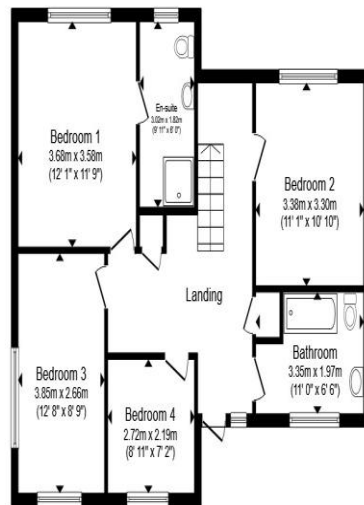
Off road parking

Garage

Window to front aspect, flat roof, boiler, electric door.



Ground Floor



First Floor

Total floor area 177.1 m² (1,907 sq.ft.) approx

This floor plan is for illustrative purposes only. It is not drawn to scale. Any measurements, floor areas (including any total floor area), openings and orientation are approximate. No details are guaranteed, they cannot be relied upon for any purpose and they do not form part of any agreement. No liability is taken for any error, omission or misstatement. A party must rely upon its own inspection(s). Powered by www.propertybox.io



welcome to
Ambermere The Street,
Thorndon Eye

- Beautifully maintained four-bedroom detached house
- Driveway & double garage
- Spacious lounge complete with wood burner
- Kitchen with integrated appliances and separate utility room
- Conservatory

Tenure: Freehold EPC Rating: D
Council Tax Band: E

guide price

£400,000



view this property online williamhbrown.co.uk/Property/DSS111115



Property Ref:
DSS111115 - 0008

1. MONEY LAUNDERING REGULATIONS Intending purchasers will be asked to produce identification documentation at a later stage and we would ask for your co-operation in order that there is no delay in agreeing the sale. 2. These particulars do not constitute part or all of an offer or contract. 3. The measurements indicated are supplied for guidance only and as such must be considered incorrect. Potential buyers are advised to recheck measurements before committing to any expense. 4. We have not tested any apparatus, equipment, fixtures or services and it is in the buyers interest to check the working condition of any appliances. 5. Where an EPC, or a Home Report (Scotland only) is held for this property, it is available for inspection at the branch by appointment. If you require a printed version of a Home Report, you will need to pay a reasonable production charge reflecting printing and other costs. 6. We are not able to offer an opinion either written or verbal on the content of these reports and this must be obtained from your legal representative. 7. Whilst we take care in preparing these reports, a buyer should ensure that his/her legal representative confirms as soon as possible all matters relating to title including the extent and boundaries of the property and other important matters before exchange of contracts.

William H Brown is a trading name of Sequence (UK) Limited which is registered in England and Wales under company number 4268443, Registered Office is Cumbria House, 16-20 Hockliffe Street, Leighton Buzzard, Bedfordshire, LU7 1GN. VAT Registration Number is 500 2481 05.



william h brown



01379 644719



Diss@williamhbrown.co.uk



1 Navire House Mere Street, DISS, Norfolk,
IP22 4AG



williamhbrown.co.uk