

SNELLERS

ESTATE AGENTS



Haliburton Road, TW1

£1,100,000

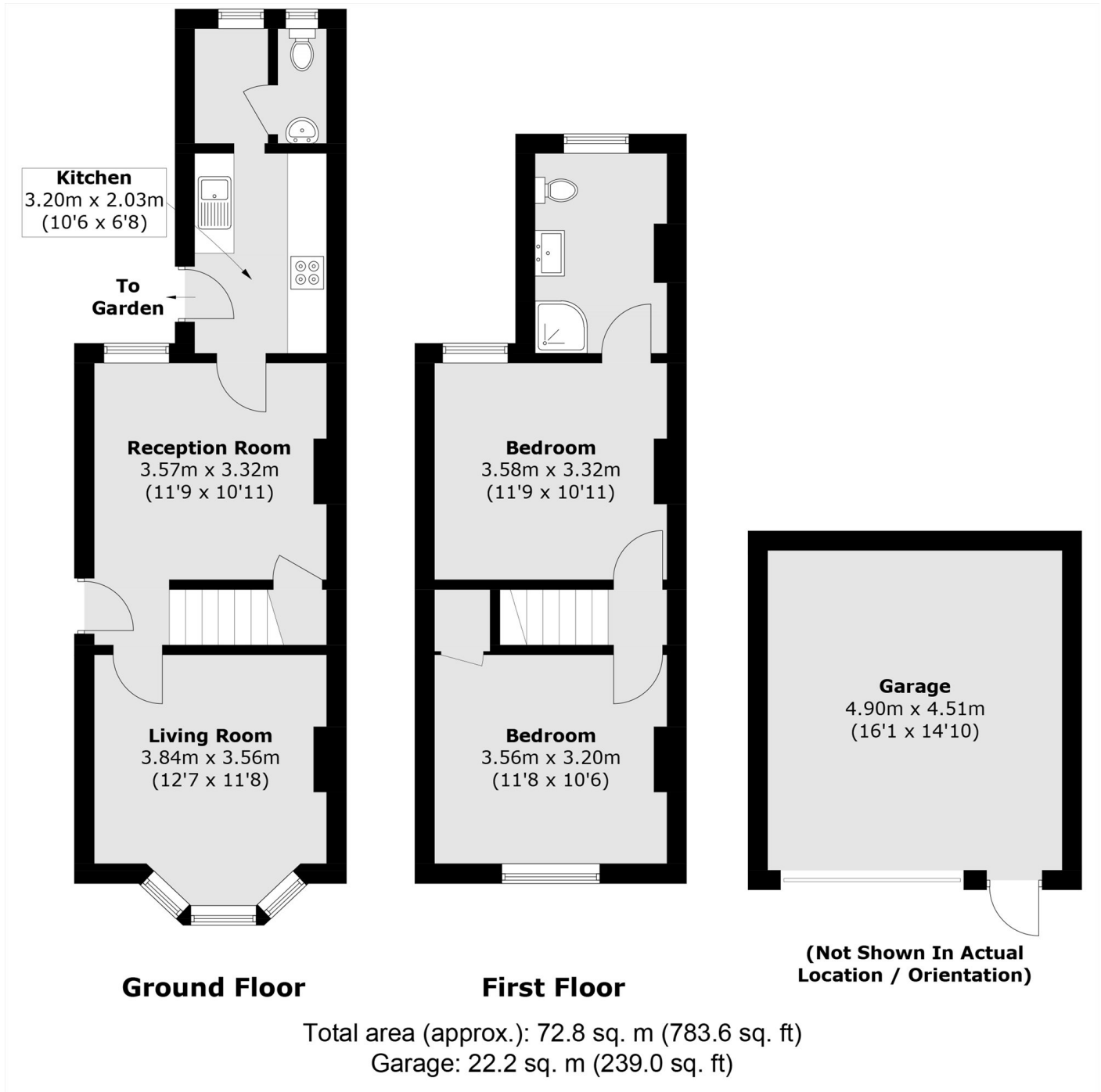
Perfectly placed on Haliburton Road, this charming two-bedroom period home offers well-balanced accommodation and a discreet rear garden, full of character and potential.

Haliburton Road is a popular residential street in the heart of St Margarets, the River Thames, Marble Hill Park and Richmond are all within easy reach, offering the perfect balance of village charm, green open spaces and excellent transport links into central London.

- Two double bedrooms • Two reception rooms • Private garden •
- Period home •

SNELLERS

ESTATE AGENTS



Snellers St. Margarets Sales
36 Crown Road
St Margarets
TW1 3EH
020 8892 8008
stmargaretssales@snellers.co.uk

Energy Rating: D We aim to make our particulars both accurate and reliable. However they are not guaranteed; nor do they form part of an offer or contract. If you require clarification on any points then please contact us, especially if you're traveling some distance to view. Please note that appliances and heating systems have not been tested and therefore no warranties can be given as to their good working order