

SNELLERS

ESTATE AGENTS



St. Margarets Road, TW1

£479,950

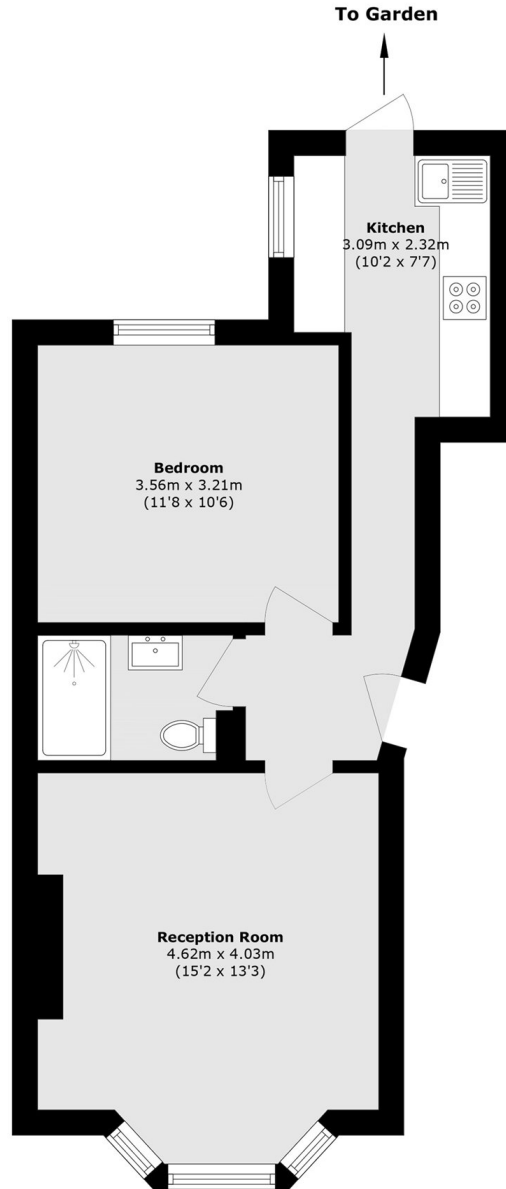
Perfectly placed on St Margarets Road, this beautifully presented one-bedroom period conversion combines modern finishes with original charm. Large bay window fills the apartment with natural light, while the generous private garden provides a wonderful extension of the living space, making it an ideal first home or investment.

St Margarets Road is ideally positioned between St Margarets village and Richmond town centre, offering the best of both. Independent cafés, restaurants and shops are close by, while St Margarets and Richmond stations provide excellent transport links into central London. The River Thames, Marble Hill Park and Richmond Green are all nearby, offering beautiful open spaces and scenic walks.

- Prime St Margarets Location
- Period conversion
- Private garden
- Modern finish
- Large windows

SNELLERS

ESTATE AGENTS



Total area (approx.): 45.3 sq. m (487.6 sq. ft)

Snellers St. Margarets Sales
36 Crown Road
St Margarets
TW1 3EH
020 8892 8008
stmargaretssales@snellers.co.uk

Energy Rating: We aim to make our particulars both accurate and reliable. However they are not guaranteed; nor do they form part of an offer or contract. If you require clarification on any points then please contact us, especially if you're traveling some distance to view. Please note that appliances and heating systems have not been tested and therefore no warranties can be given as to their good working order