

FLETCHERS

ESTATE AGENTS



Rosemont Road, W3

£2,700 Per week (pcm)

A well-presented two-bedroom, two-bathroom apartment offering 61.1 sq m (658 sq ft) of modern living space and a 6.0 sq m private balcony. The apartment features a bright open-plan kitchen, living and dining area with floor-to-ceiling windows and sliding doors opening onto the balcony. The modern kitchen is fitted with integrated appliance

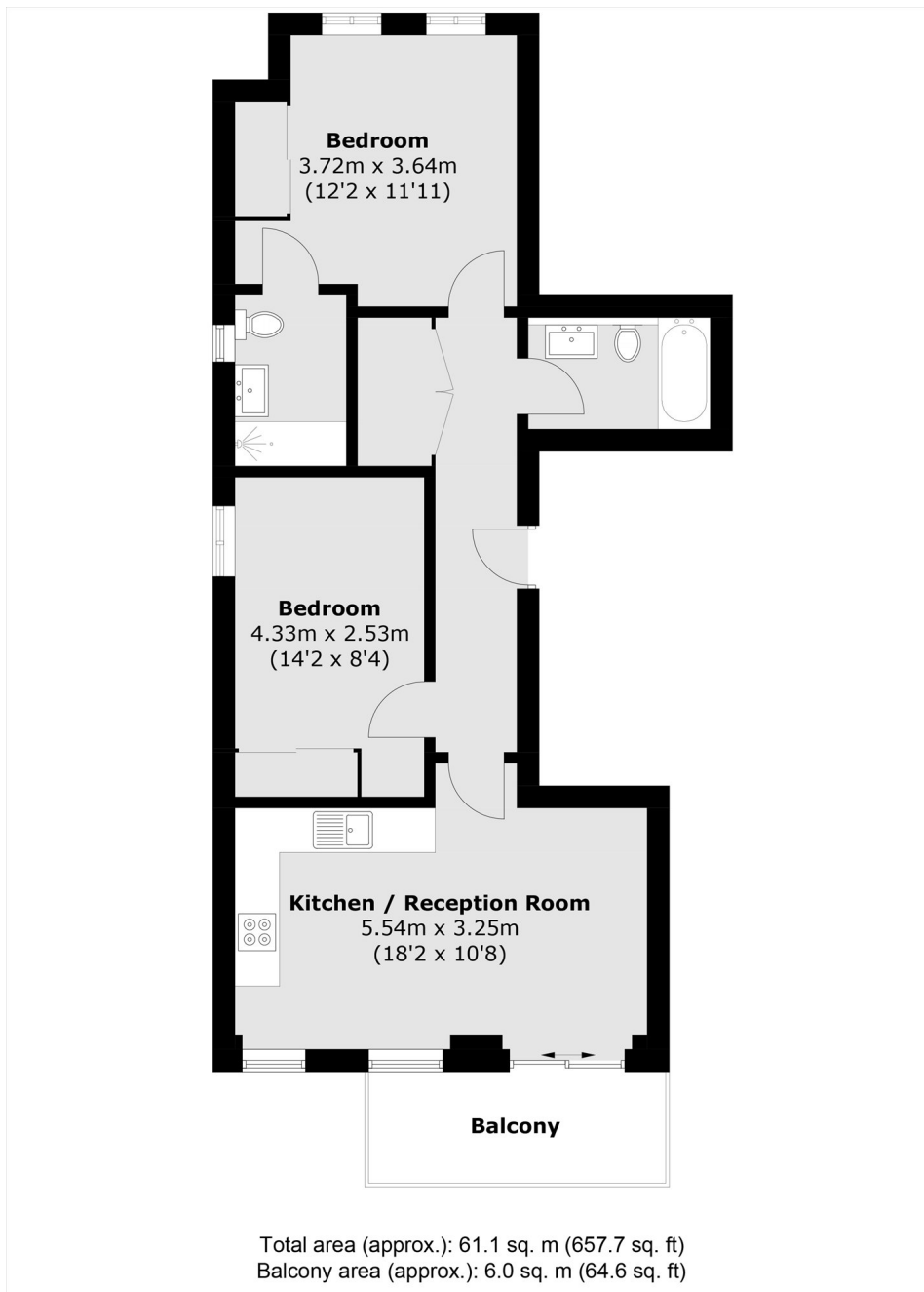
Both bedrooms are generously sized, and the apartment also benefits from two contemporary bathrooms. Finished to a high standard throughout, this stylish apartment offers comfortable, modern living with plenty of natural light.

Located in Acton, the property is within easy reach of a wide range of shops, cafés, restaurants and green open spaces. Excellent transport links include Acton Main Line (Elizabeth line), West Acton (Central line) and Ealing Common (District & Piccadilly lines), providing fast and convenient access to Central London, the City and Heathrow Airport.

- Natural light • Two bedroom • Two bathroom • Modern • Open-plan design • Private Balcony •

FLETCHERS

ESTATE AGENTS



Fletchers Chiswick High Road Lettings
86 Chiswick High Road, Chiswick, London, W4 1SY
020 8742 4100
chiswicklettings@fletcherstates.com

Energy Rating: B. We aim to make our particulars both accurate and reliable. However they are not guaranteed; nor do they form part of an offer or contract. If you require clarification on any points then please contact us, especially if you're traveling some distance to view. Please note that appliances and heating systems have not been tested and therefore no warranties can be given as to their good working order.