



Pinkmove

Victoria Place Viaduct

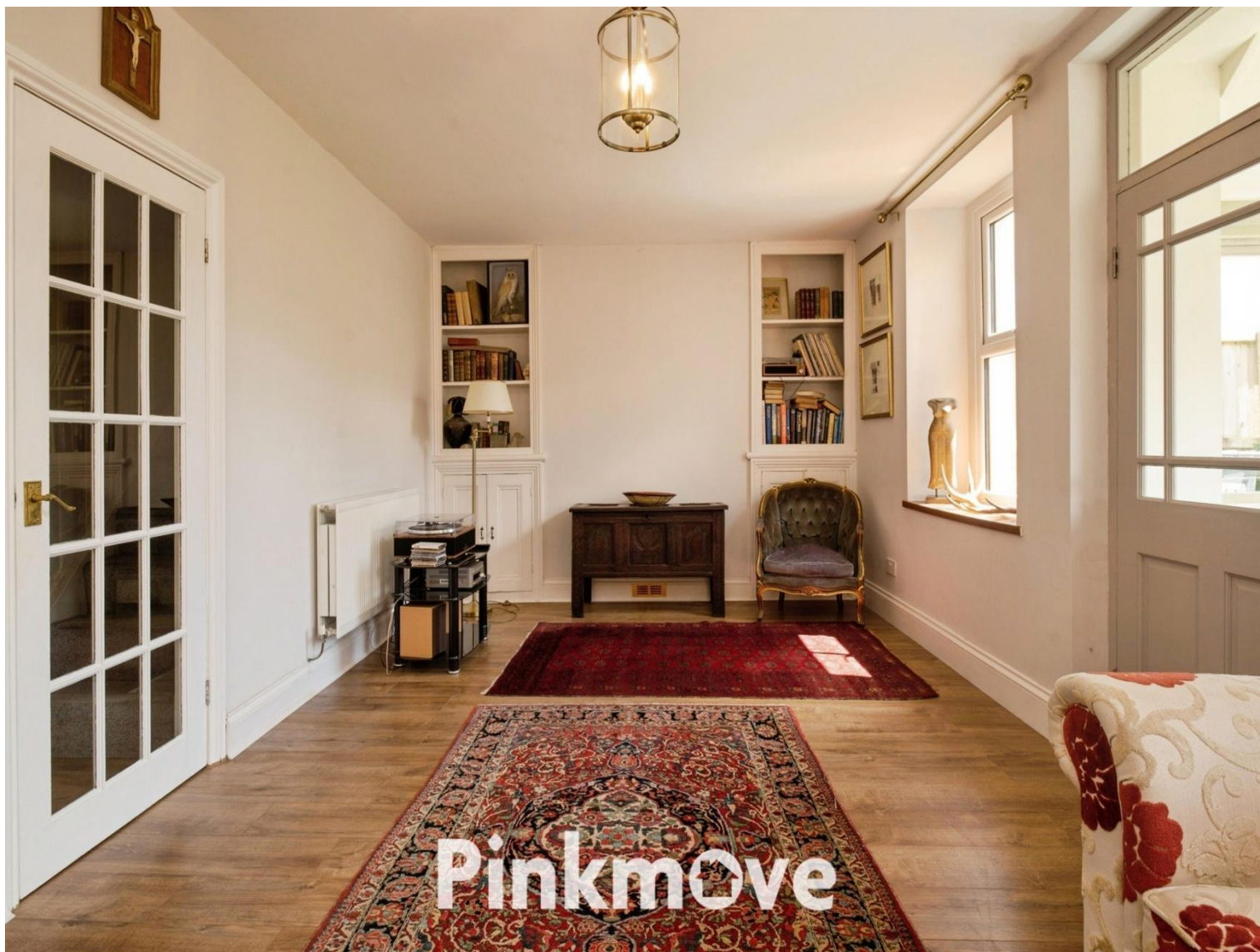
Guide Price £170,000 - £180,000

- Guide Price £170,000 to £180,000
- Three bedrooms
- Mid-Terrace Cottage
- Newly Fitted Kitchen
- Updated Family bathroom
- Original Features
- EPC Rating: C



Pinkmove

01633 746088
team@pinkmove.co.uk



About the property

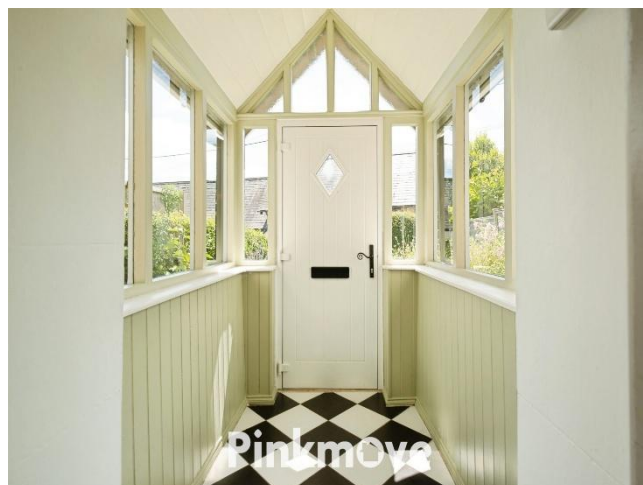
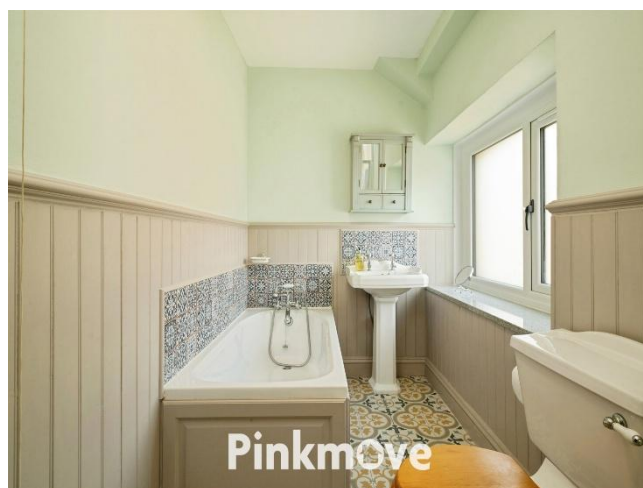
Charming three-bedroom mid-terrace cottage situated in the popular Garniffaith area, beautifully presented and finished to a high standard throughout.

The property benefits from recently installed front windows and an attractive porch, adding to its character and kerb appeal. To the front is a generous south-facing garden, perfect for enjoying outdoor living.

Internally, the home offers a cosy and inviting lounge with feature fireplace, leading through to a stylish, recently fitted kitchen finished in natural tones. The kitchen provides excellent storage and flows into a spacious utility area, with access to a low-maintenance courtyard-style rear garden with a useful storage shed.

Upstairs, the property boasts three well-proportioned bedrooms, along with a bright and airy landing and a recently updated four-piece family bathroom suite.

Well maintained throughout, this attractive property combines character and modern comfort, making it an ideal home.





Accommodation

Living Room

Kitchen

Utility

Bedroom 1

Bedroom 2

Bedroom 3

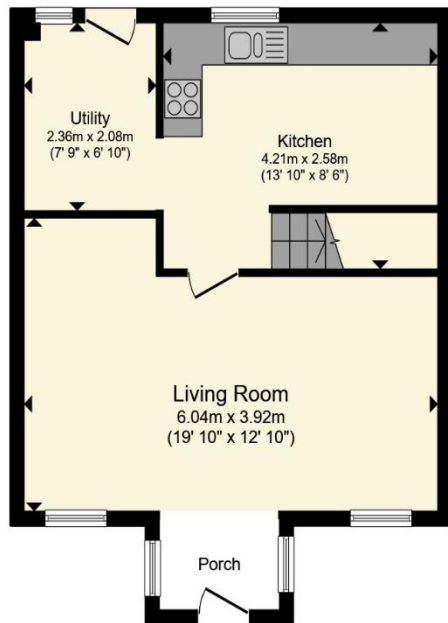
Bathroom

01633 746088

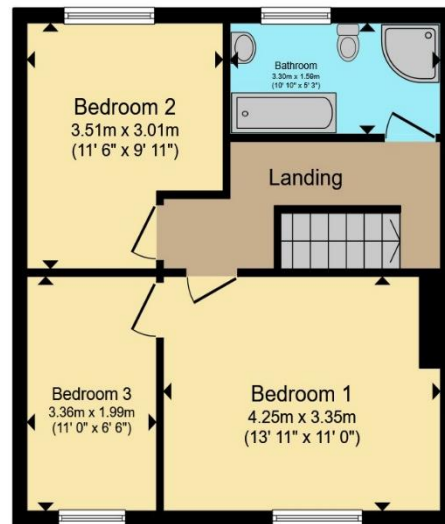
team@pinkmove.co.uk

Pinkmove

Floorplan



Ground Floor



First Floor

Total floor area 88.3 sq.m. (950 sq.ft.) approx

This floor plan is for illustrative purposes only. It is not drawn to scale. Any measurements, floor areas (including any total floor area), openings and orientation are approximate. No details are guaranteed, they cannot be relied upon for any purpose and they do not form part of any agreement. No liability is taken for any error, omission or misstatement. A party must rely upon its own inspection(s). Powered by www.localagent.com

Pinkmove

Important Information

Note while we endeavour to make our sales details accurate and reliable, if there is any point which is of particular interest to you, please contact the office and we will be pleased to confirm the position for you. We have not personally tested any apparatus, equipment, fixtures, fittings or services and cannot verify they are in working order or fit for their purposes. Nothing in these particulars is intended to indicate that carpets or curtains, furnishings or fittings, electrical goods (whether wired or not). Gas fires or light fittings or any other fixtures not expressly included form part of the property offered for sale. This computer generated Floorplan, if applicable, is intended as a general guide to the layout and design of the property. It is not to scale and should not be relied upon for dimensions. Tenure: We cannot confirm the tenure of the property as we have not had access to the legal documents. The buyer is advised to obtain verification from their solicitor or surveyor.

Peter Alan Limited is registered in England and Wales under company number 2073153. Registered Office is Cumbria House, 16-20 Hockliffe Street, Leighton Buzzard, Bedfordshire, LU7 1GN. VAT Registration Number is 500 2481 05. For activities relating to regulated mortgages and non-investment insurance contracts, Peter Alan Limited is an appointed representative of Connells Limited which is authorised and regulated by the Financial Conduct Authority. Connells Limited's Financial Services Register number is 302221. Most buy-to-let

