



MARFORD ROAD ST. ALBANS AL4
£5,000 PER MONTH AVAILABLE 03/09/2026

Hamptons

THE HOME EXPERTS

{ THE PARTICULARS

Marford Road St. Albans AL4

£5,000 Per Month
Unfurnished

 6 Bedrooms
 4 Bathrooms
 4 Receptions

Features

- 6 Bedrooms, - 3 Reception Rooms, -
Detached, - Sought-after Location, - Off
Street Parking, - Double Garage, -
Attractive Garden, - Unfurnished, -
Available September 2026

Council Tax

Council Tax Band G

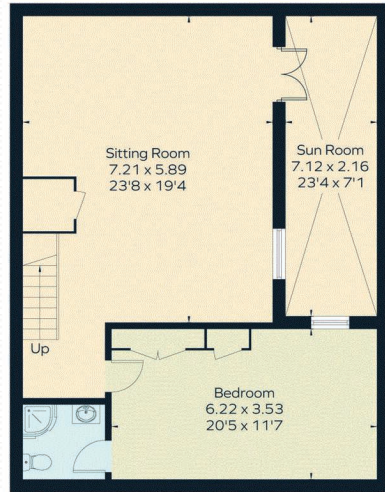
Hamptons
38 High Street
Harpenden, AL5 2SX
01582 742998
harpendenlettings@hamptons.co.uk
www.hamptons.co.uk

The Property

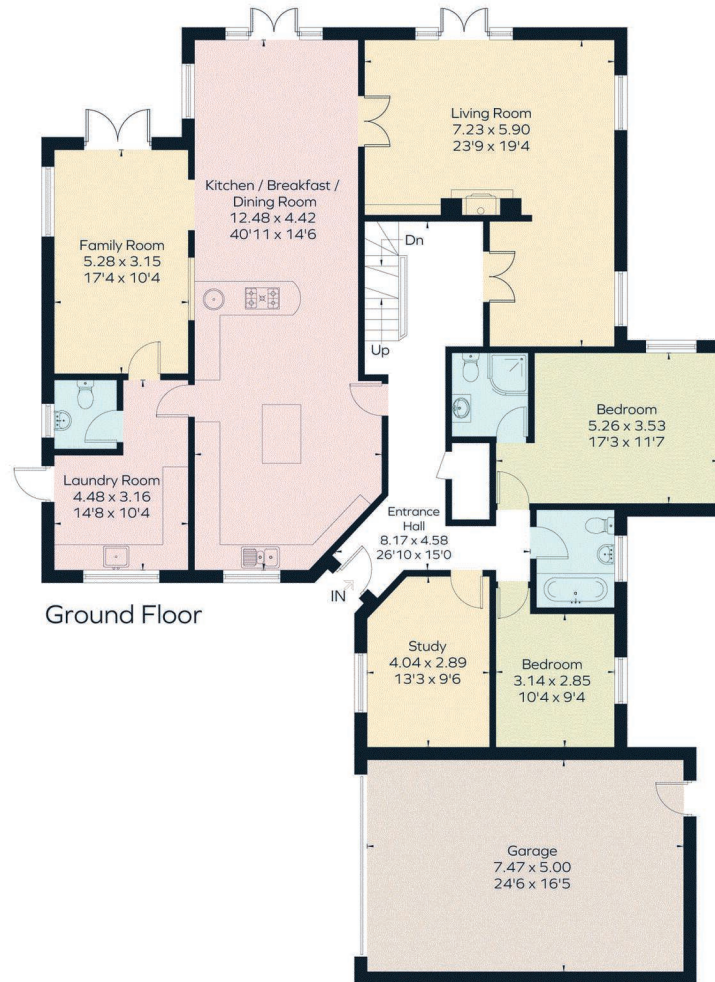
A spacious detached family home in the heart of Wheathampstead village. On the ground floor there is a 40ft kitchen/breakfast room with direct access to the garden, also leading through to a useful utility room with downstairs cloakroom. The bright living room has a log burning stove also with patio doors to the garden. Other features on the ground floor include two further reception rooms ideal as a family room and study, two bedrooms (one en suite) and a family bathroom. On the lower ground floor there is a sitting room leading to a sun room and bedroom with en suite shower room. On the first floor there are three further bedrooms and a family bathroom. Offering flexible accommodation over three floors, this wonderful family home of in excess of 4500 square feet provide a versatile living and entertaining space for a family. Further selling points include, off street parking, a double garage and attractive garden with patio area. Available beginning of September 2026 on an unfurnished basis. Council Tax Band G | Tenancy Deposit £6,923.08 | EPC: C



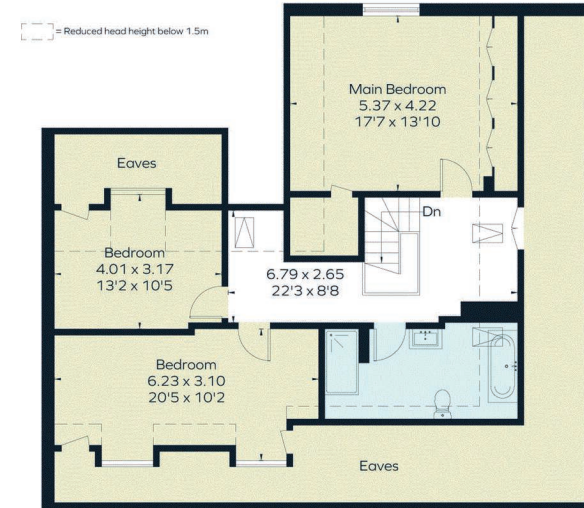
Approximate Floor Area = 407.5 sq m / 4386 sq ft (Including Eaves)
 Garage = 37.4 sq m / 402 sq ft
 Total = 444.9 sq m / 4788 sq ft



Lower Ground Floor



Ground Floor



First Floor



This floor plan has been drawn in accordance with RICS Property Measurement 2nd edition.
 All measurements, including the floor area, are approximate and for illustrative purposes only. @fourwalls-group.com #93514

For Clarification
 We wish to inform prospective tenants that we have prepared these particulars as a general guide and they have been confirmed as accurate by the landlord. We have not verified permissions, nor carried out a survey, tested the services, appliances and specific fittings. Room sizes are approximate and measurement figures rounded: they are taken between internal wall surfaces and therefore include cupboards/shelves, etc. Accordingly, they should not be relied upon for

carpets and furnishings. It should also be noted that all fixtures and fittings, carpeted, curtains/blinds, kitchen equipment and garden statuary, whether fitted or not, are deemed removable by the landlord unless specifically itemised with these particulars. Please enquire in office or on our website for details on holding deposit and tenancy deposit figures.

Energy Efficiency Rating		Current	Potential
Band	A		
Band	B		
Band	C		
Band	D		
Band	E		
Band	F		
Band	G		
Score		76	81
England & Wales		EU Directive 2002/91/EC	

