



Cendl Terrace, £180,000

- Three Bedroom
- Mid-Terrace
- Well-Presented
- Garage
- Sought-After Location
- EPC Rating: C



3 1 2



About the property

This well-presented three-bedroom mid-terrace property offers comfortable and spacious accommodation, making it an ideal first-time purchase, family home, or investment opportunity. Tastefully maintained throughout, the property provides a welcoming atmosphere with well-proportioned rooms and a practical layout designed for modern living.

The ground floor comprises a bright and inviting living room, perfect for relaxing and entertaining, along with a fitted kitchen offering ample storage and workspace. Upstairs, there are three good-sized bedrooms, providing flexible accommodation for families, home working, or guest use. A family bathroom completes the first-floor accommodation.

Externally, the property benefits from low-maintenance outdoor space, ideal for enjoying the warmer months. A particular feature of the home is the detached garage, providing valuable off-road parking, secure storage, or workshop potential.

Conveniently situated close to local amenities, schools, and transport links, the property is well placed for everyday convenience and commuting requirements. The combination of generous living space, attractive presentation, and the added benefit of a garage makes this home a fantastic opportunity for a wide range of buyers

Early viewing is highly recommended to fully appreciate all that this appealing property has to offer.

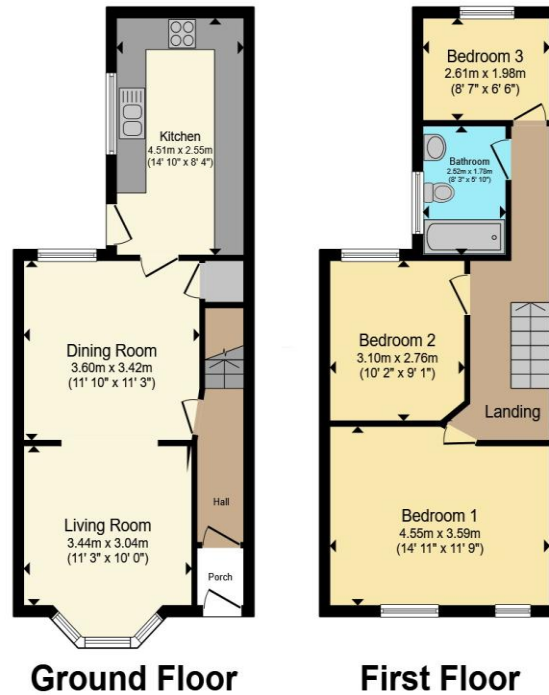


Accommodation

01495360922

ebbwwale@peteralan.co.uk

Floorplan



Total floor area 82.7 m² (890 sq.ft.) approx

This floor plan is for illustrative purposes only. It is not drawn to scale. Any measurements, floor areas (including any total floor area), openings and orientation are approximate. No details are guaranteed, they cannot be relied upon for any purpose and they do not form part of any agreement. No liability is taken for any error, omission or misstatement. A party must rely upon its own inspection(s). Powered by www.propertybox.io



Important Information

Note while we endeavour to make our sales details accurate and reliable, if there is any point which is of particular interest to you, please contact the office and we will be pleased to confirm the position for you. We have not personally tested any apparatus, equipment, fixtures, fittings or services and cannot verify they are in working order or fit for their purposes. Nothing in these particulars is intended to indicate that carpets or curtains, furnishings or fittings, electrical goods (whether wired or not). Gas fires or light fittings or any other fixtures not expressly included form part of the property offered for sale. This computer generated Floorplan, if applicable, is intended as a general guide to the layout and design of the property. It is not to scale and should not be relied upon for dimensions. Tenure: We cannot confirm the tenure of the property as we have not had access to the legal documents. The buyer is advised to obtain verification from their solicitor or surveyor.

Peter Alan Limited is registered in England and Wales under company number 2073153, Registered Office is Cumbria House, 16-20 Hockliffe Street, Leighton Buzzard, Bedfordshire, LU7 1GN. VAT Registration Number is 500 2481 05. For activities relating to regulated mortgages and non-investment insurance contracts, Peter Alan Limited is an appointed representative of Connells Limited which is authorised and regulated by the Financial Conduct Authority. Connells Limited's Financial Services Register number is 302221. Most buy-to-let

