



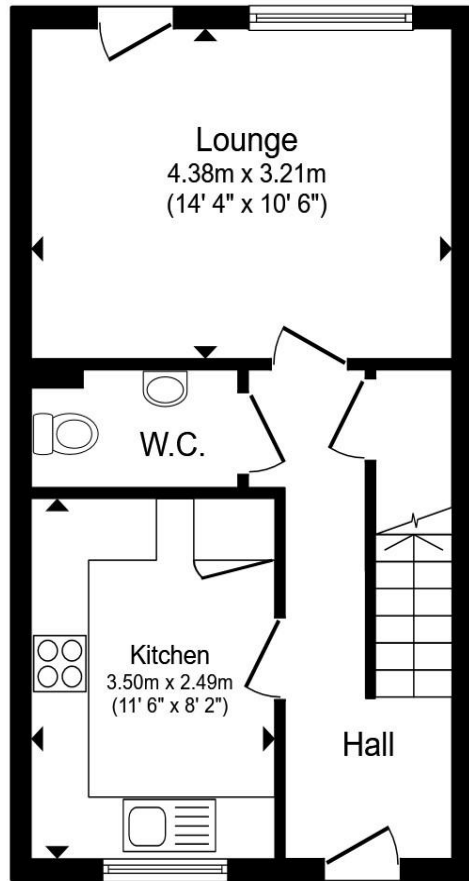
Malayan Place, Saughton Chester CH3 6GJ

welcome to

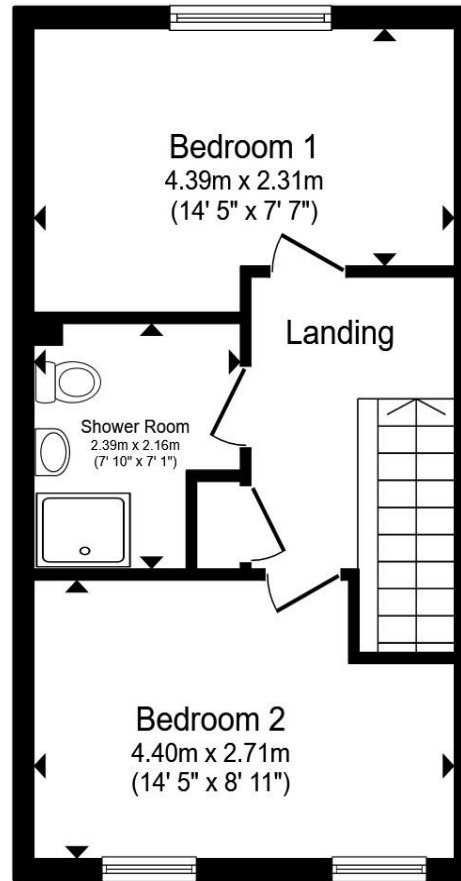
Malayan Place, Saighton Chester

25% SHARED OWNERSHIP An excellent opportunity to purchase this well-presented, chain-free two-bedroom end-terrace home, ideally situated within the popular residential development at Saighton, just a short drive from Chester city centre.





Ground Floor



First Floor

Total floor area 70.8 m² (762 sq.ft.) approx

This floor plan is for illustrative purposes only. It is not drawn to scale. Any measurements, floor areas (including any total floor area), openings and orientation are approximate. No details are guaranteed, they cannot be relied upon for any purpose and they do not form part of any agreement. No liability is taken for any error, omission or misstatement. A party must rely upon its own inspection(s). Powered by www.propertybox.io

welcome to

Malayan Place, Saighton Chester

- SHARED OWNERSHIP SCHEME
- CHAIN FREE
- TWO DOUBLE BEDROOMS
- LOW MAINTENANCE GARDEN
- OFF ROAD PARKING

Tenure: Leasehold EPC Rating: Awaiting

Council Tax Band: B Service Charge: Ask Agent

Ground Rent: Ask Agent

This is a Leasehold property with details as follows; Term of Lease 125 years from 01 May 2013.

Should you require further information please contact the branch. Please Note additional fees could be incurred for items such as Leasehold packs.

shared ownership

£67,500



Please note the marker reflects the postcode not the actual property

check out more properties at [swetenhams.co.uk](https://www.swetenhams.co.uk)



Property Ref:
CHS119607 - 0002

1. MONEY LAUNDERING REGULATIONS Intending purchasers will be asked to produce identification documentation at a later stage and we would ask for your co-operation in order that there is no delay in agreeing the sale. 2. These particulars do not constitute part or all of an offer or contract. 3. The measurements indicated are supplied for guidance only and as such must be considered incorrect. Potential buyers are advised to recheck measurements before committing to any expense. 4. We have not tested any apparatus, equipment, fixtures or services and it is in the buyers interest to check the working condition of any appliances. 5. Where an EPC, or a Home Report (Scotland only) is held for this property, it is available for inspection at the branch by appointment. If you require a printed version of a Home Report, you will need to pay a reasonable production charge reflecting printing and other costs. 6. We are not able to offer an opinion either written or verbal on the content of these reports and this must be obtained from your legal representative. 7. Whilst we take care in preparing these reports, a buyer should ensure that his/her legal representative confirms as soon as possible all matters relating to title including the extent and boundaries of the property and other important matters before exchange of contracts.

Not for marketing purposes INTERNAL USE ONLY



01244 321321



chester@swetenhams.co.uk



28 Lower Bridge Street, CHESTER, Cheshire,
CH1 1RS



[swetenhams.co.uk](https://www.swetenhams.co.uk)