

# SNELLERS

ESTATE AGENTS



## Marlborough Road, TW13

£299,950

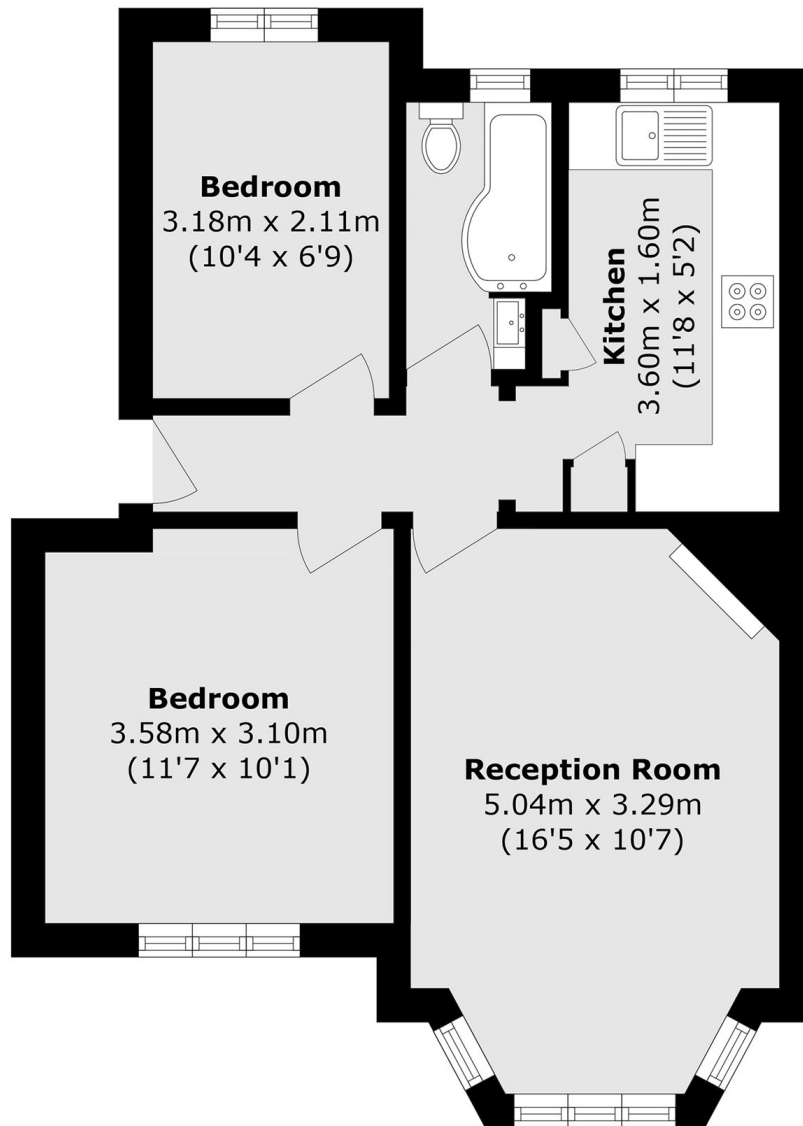
This two bedroom, first floor maisonette boasts a large private garden and has its own entrance. The property benefits from plenty of natural light throughout, contemporary styling and a generous reception room which includes a beautiful bay window at the front. The South-West facing garden at the rear is spacious and ready for the enjoyment of a young family or professionals.

Marlborough Road is a quiet residential road conveniently located between Hampton and Feltham, with excellent transport links to Central London and easy access to the M3, M25 and Heathrow Airport. The property is also located a short distance from local cafes and shops.

- Two Bedrooms • Private Garden • First Floor •
- Maisonette • New Lease Extension • Central Location •

# SNELLERS

ESTATE AGENTS



Total area (approx.): 49.1 sq. m (528.5 sq. ft)

Snellers Hampton Hill Sales  
197-201 High Street  
Hampton Hill  
TW12 1NL  
020 8783 0083  
hamptonsales@snellers.co.uk

Energy Rating: D We aim to make our particulars both accurate and reliable. However they are not guaranteed; nor do they form part of an offer or contract. If you require clarification on any points then please contact us, especially if you're traveling some distance to view. Please note that appliances and heating systems have not been tested and therefore no warranties can be given as to their good working order