



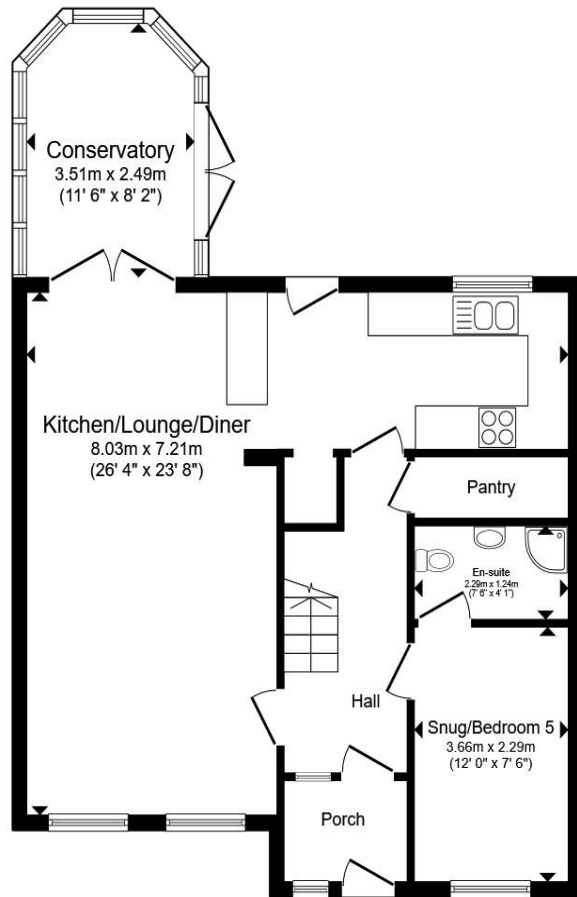
Sandpiper Gardens, Chippenham, SN14 6YH

welcome to

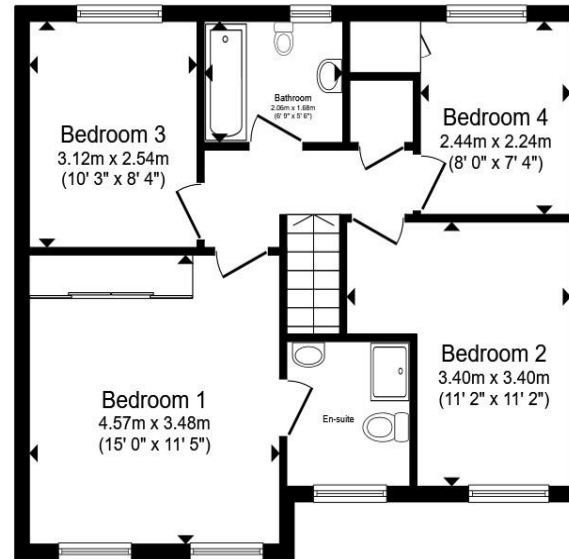
Sandpiper Gardens, Chippenham

A spacious five bedroom detached family home offering flexible accommodation throughout. Features include a stunning open-plan lounge/dining/kitchen area, conservatory, en-suite to principal bedroom, driveway parking and a low-maintenance rear garden - Book now to avoid missing out!





Ground Floor



First Floor

- Entrance Porch**
- Hallway**
- Lounge/Diner/Kitchen**
- Conservatory**
- Snug/Bedroom Five**
- En-Suite**
- Landing**
- Bedroom One**
- En-Suite**
- Bedroom Two**
- Bedroom Three**
- Bedroom Four**
- Family Bathroom**
- Front Garden**
- Rear Garden**
- Driveway Parking**

Total floor area 122.1 m² (1,314 sq.ft.) approx

This floor plan is for illustrative purposes only. It is not drawn to scale. Any measurements, floor areas (including any total floor area), openings and orientation are approximate. No details are guaranteed, they cannot be relied upon for any purpose and they do not form part of any agreement. No liability is taken for any error, omission or misstatement. A party must rely upon its own inspection(s). Powered by www.propertybox.io



welcome to

Sandpiper Gardens, Chippenham

- Detached Five Bedroom Family Home
- Approx. 1,300 Sq.Ft. of Versatile Accommodation
- En-Suite to Principal Bedroom
- Enclosed Low-Maintenance Rear Garden & Driveway Parking
- No Onwards Chain

Tenure: Freehold EPC Rating: C
Council Tax Band: E

guide price

£450,000



Please note the marker reflects the
postcode not the actual property

view this property online allenandharris.co.uk/Property/CHP111941



Property Ref:
CHP111941 - 0003

1. MONEY LAUNDERING REGULATIONS Intending purchasers will be asked to produce identification documentation at a later stage and we would ask for your co-operation in order that there is no delay in agreeing the sale. 2. These particulars do not constitute part or all of an offer or contract. 3. The measurements indicated are supplied for guidance only and as such must be considered incorrect. Potential buyers are advised to recheck measurements before committing to any expense. 4. We have not tested any apparatus, equipment, fixtures or services and it is in the buyers interest to check the working condition of any appliances. 5. Where an EPC, or a Home Report (Scotland only) is held for this property, it is available for inspection at the branch by appointment. If you require a printed version of a Home Report, you will need to pay a reasonable production charge reflecting printing and other costs. 6. We are not able to offer an opinion either written or verbal on the content of these reports and this must be obtained from your legal representative. 7. Whilst we take care in preparing these reports, a buyer should ensure that his/her legal representative confirms as soon as possible all matters relating to title including the extent and boundaries of the property and other important matters before exchange of contracts.


allen & harris



01249 655255



chippenham@allenandharris.co.uk



37 Market Place, CHIPPENHAM, Wiltshire,
SN15 3HT



allenandharris.co.uk