

Frank Harris & Co.



Copenhagen Street, N1

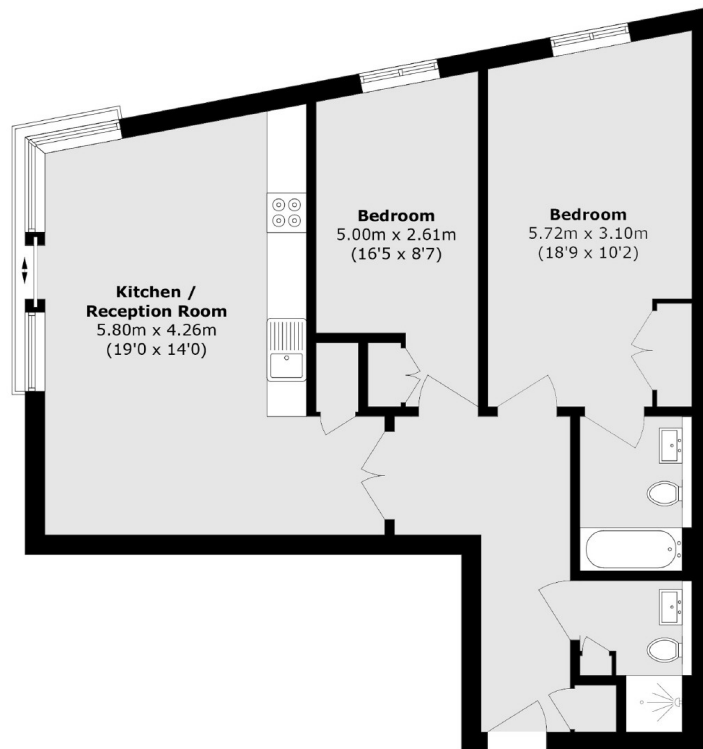
£4,000 pcm

This two-bedroom, two-bathroom flat features a spacious open-plan kitchen and living area, containing all the modern appliances. The property benefits from lift access and the floor to ceiling windows allow plenty of natural light.

Copenhagen Street is conveniently located near King's Cross and St Pancras stations, offering excellent transport links. It's also just a short walk from the vibrant shops and restaurants of Coal Drops Yard.

- Two Bedrooms • Two Bathrooms • Furnished •
- Lift Access • Available Immediately • New Build •

Frank Harris & Co.



Total area (approx.): 75.8 sq. m (815.9 sq. ft)

Frank Harris & Co. Bloomsbury and Kings Cross
81 Marchmont Street,
London, WC1N 1AL
020 7387 0077
bloomsburylettings@frankharris.co.uk

Energy Rating: . We aim to make our particulars both accurate and reliable. However they are not guaranteed; nor do they form part of an offer or contract. If you require clarification on any points then please contact us, especially if you're traveling some distance to view. Please note that appliances and heating systems have not been tested and therefore no warranties can be given as to their good working order.

