

56 Barn Owl Road, Yatton, BS49 4GH

£1,450 Per Calendar Month

marktempler

RESIDENTIAL LETTINGS





PROPERTY TYPE

House



LOCATION

Yatton



BEDROOMS

3



RECEPTION ROOMS

1



BATHROOMS

2



WARMTH

Gas central heating & double glazing



PARKING

Allocated Parking



OUTSIDE SPACE

Rear Garden



EPC RATING

B



COUNCIL TAX BAND

C



Modern three-bedroom terraced home located on the popular Barn Owl Road, Yatton.

Three bedrooms, two doubles, one used as an office space

Holding deposit - £334.61

Security deposit - £1,673.07

EPC Rating - B

Council Tax Rating - C

What will it cost to rent this property?

When you submit a completed application form, we will discuss the details with the Landlord. If the Landlord is happy to proceed you will be required to pay:

1. Holding deposit, equivalent to 1 week's rent. This will reserve the property.

Once references are complete, you will be asked to pay:

2. First month's rent

3. Security deposit, equivalent to 5 weeks' rent (for rents under £50,000 per year). This covers damages or defaults on the part of the tenant during the tenancy.



Spacious open-plan kitchen, living and dining area.

Light and airy living space with patio doors leading to the rear garden.

Principal bedroom with modern en-suite shower room.

Finished to a high standard throughout with contemporary décor.

Available From:

This property is available to move into from approximately 28th September 2026



Utilities

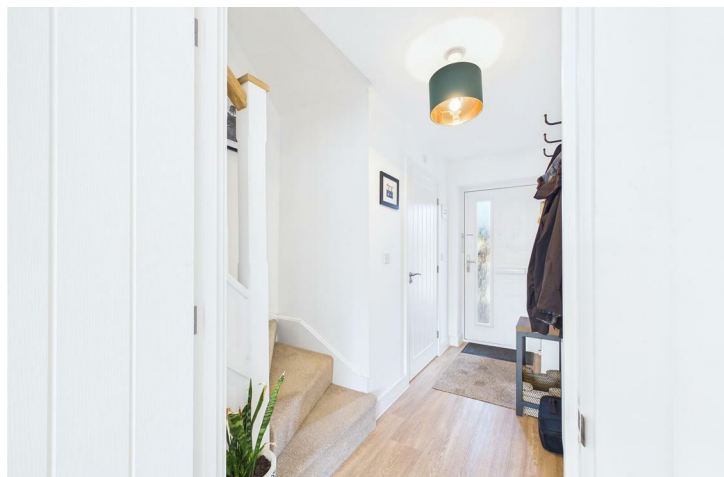
Mains water and drainage, mains electric supply, gas central heating. This information has been provided by the Landlord and is correct to the best of our knowledge.

Broadband

Ultrafast broadband available with highest available download speed 1800 Mbps and highest available upload speed 220 Mbps. This information is sourced via [checker.ofcom.org.uk](https://www.checker.ofcom.org.uk), we advise you make your own enquires.

Mobile phone coverage

There is limited coverage indoors depending on the provider and limited coverage outdoors with a range of providers. This information is sourced via [checker.ofcom.org.uk](https://www.checker.ofcom.org.uk), we advise you make your own enquires.



For the latest properties and local news follow Mark Templer Residential Lettings on:



